

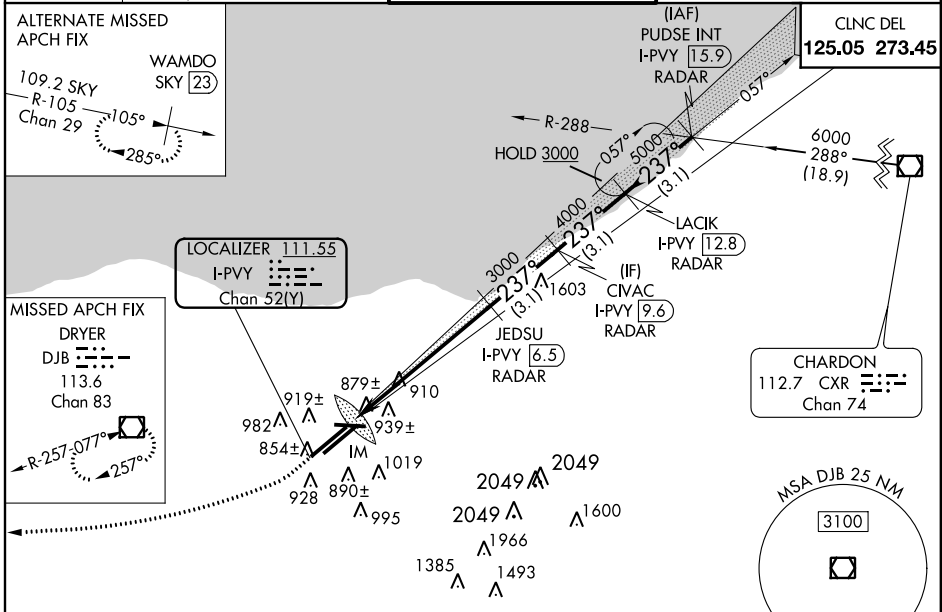
LOC/DME I-PVY <b>111.55</b> Chan 52(Y)	APP CRS <b>237°</b>	Rwy Idg THRE <b>780</b> Apt Elev <b>799</b>
--	------------------------	---

# ILS RWY 24R (CAT III)

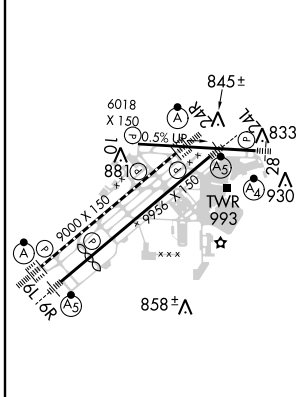
CLEVELAND-HOPKINS INTL (CLE)

<p>Simultaneous approach authorized with Rwy 24L.</p>	ALSF-2 	MISSED APPROACH: Climb to 1700 then climbing right turn to 3000 direct DJB VOR/DME and hold.
---	------------	--

ATIS ARR <b>127.85</b> DEP <b>132.375</b>	CLEVELAND APP CON 6R/24L, 28 <b>124.0 354.025</b> 6L/24R, 10 <b>126.55 354.025</b>	CLEVELAND TOWER 6R/24L, 10/28 <b>120.9 273.45</b> 6L/24R <b>124.5 273.45</b>	GND CON 6R/24L, 10/28 <b>121.7 273.45</b> 6L/24R <b>133.6 273.45</b>
---	--	--	--



ELEV 799	<b>D</b> THRE 780
----------	-------------------



DME REQUIRED			
1700	3000	DJB	VGSI and ILS glidepath not coincident (VGSI Angle 3.00/TCH 55). JEDSU I-PVY 6.5 CIVAC RADAR LACK I-PVY 12.8 RADAR PUDSE INT I-PVY 15.9 RADAR IM 880 GS 3.00° TCH 51
3000	4000	5000	6000
1064'	857'	6.7 NM	3.1 NM 3.1 NM 3.1 NM
CATEGORY	A	B	C D
S-ILS 24R		CAT IIIa	RVR 07
S-ILS 24R		CAT IIIb	RVR 06
S-ILS 24R		CAT IIIc	NA

REIL Rwy 10  
TDZ/CL Rwy 6R, 6L, 24L and 24R  
HIRL Rws 10-28, 6R-24L, and 6L-24R

EC-2, 07 FEB 2013 to 07 MAR 2013

EC-2, 07 FEB 2013 to 07 MAR 2013