

LOC/DME I-HPI 109.9 Chan 36	APP CRS 237°	Rwy Idg THRE 786 Apt Elev 799
--	------------------------	---

ILS RWY 24L (SA CAT II)

CLEVELAND-HOPKINS INTL (CLE)

Reduced lighting: requires specific OPSPEC, MSPEC, or LOA approval and use of autoland or HUD to touchdown. Simultaneous approach authorized with Rwy 24R.



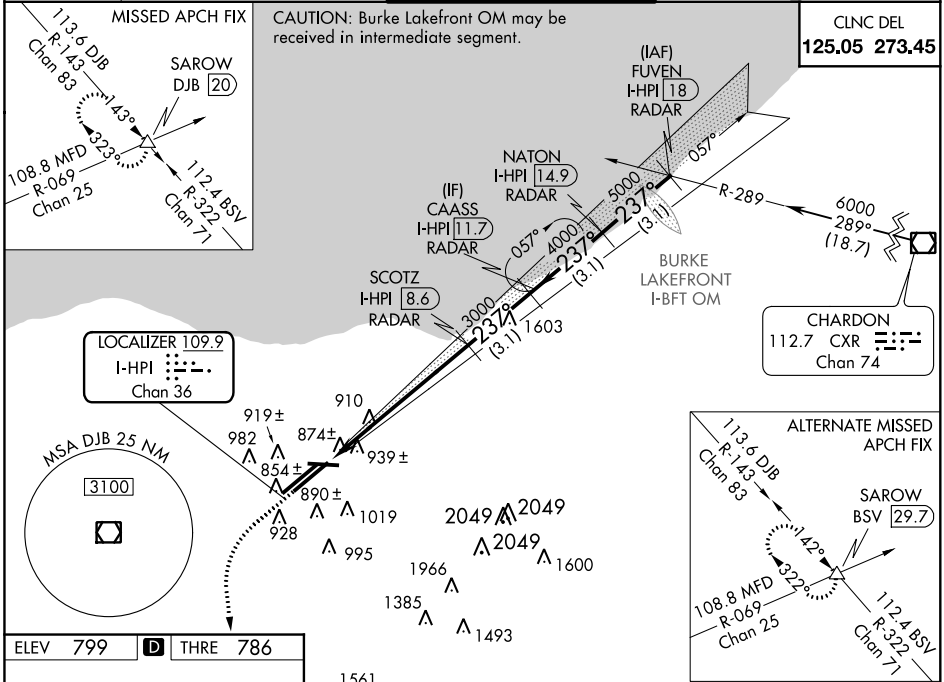
MISSED APPROACH: Climb to 1300 then climbing left turn to 3000 on heading 200° and on DJB VOR/DME R-143 to SAROW INT/DJB 20 DME and hold.

ATIS ARR 127.85 DEP 132.375	CLEVELAND APP CON 6R/24L, 28 124.0 354.025 6L/24R, 10 126.55 354.025	CLEVELAND TOWER 6R/24L, 10/28 120.9 273.45 6L/24R 124.5 273.45	GND CON 6R/24L, 10/28 121.7 273.45 6L/24R 133.6 273.45
---	--	--	--

MISSED APCH FIX

CAUTION: Burke Lakefront OM may be received in intermediate segment.

CLNC DEL
125.05 273.45

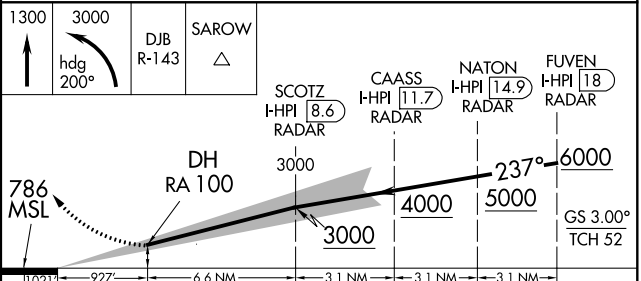
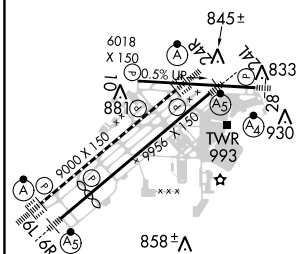


EC-2, 07 FEB 2013 to 07 MAR 2013

EC-2, 07 FEB 2013 to 07 MAR 2013

ELEV 799	D	THRE 786
----------	----------	----------

DME or RADAR REQUIRED



CATEGORY	A	B	C	D
S-ILS 24L	RA 100/12 100 DA 886			

CATEGORY II ILS - SPECIAL AIRCREW & AIRCRAFT CERTIFICATION REQUIRED

REIL Rwy 10
TDZ/CL Rwy 6R, 6L, 24L and 24R
HIRL Rws 10-28, 6R-24L, and 6L-24R