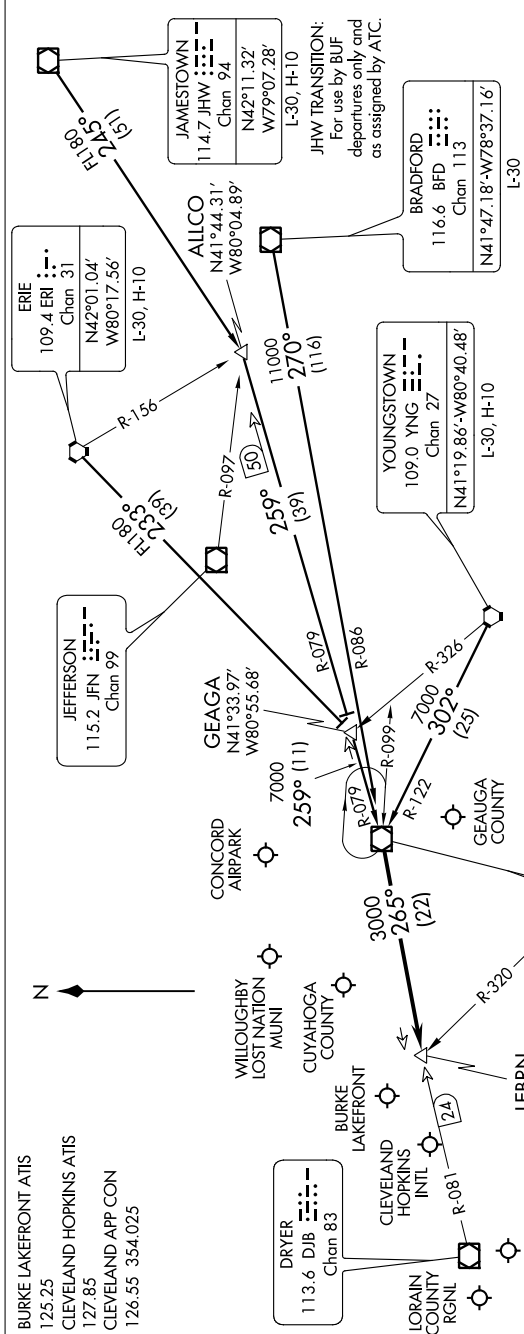


EC-2, 07 FEB 2013 to 07 MAR 2013



ARRIVAL ROUTE DESCRIPTION

BRADFORD TRANSITION (BFD.CXR2): From over BFD VOR/DME via BFD R-270 and CXR R-086 to CXR VOR/DME. Thence

ERIE TRANSITION (ERI.CXR2): From over ERI VORTAC via ERI R-233 to GEAGA INT, then via CXR R-079 to CXR VOR/DME. Thence

JAMESTOWN TRANSITION (JHW.CXR2): (For use by BUF departures only and as assigned by ATC) From over JHW VOR/DME via JHW R-245 to ALLCO INT, then via CXR R-079 to CXR VOR/DME. Thence

YOUNGSTOWN TRANSITION (YNG.CXR2): From over YNG VORTAC via YNG R-302 and CXR R-122 to CXR VOR/DME. Thence

. . . . From CXR VOR/DME via R-265 to LEBRN INT, expect vectors to final approach course.

VERTICAL NAVIGATION

PLANNING INFORMATION

TURBOJET: Expect clearance to cross at 10,000' and 250 Kts.

PROPS: Expect clearance to cross at 9000'.

NOTE: RADAR Required.

NOTE: Chart not to scale.

EC-2, 07 FEB 2013 to 07 MAR 2013