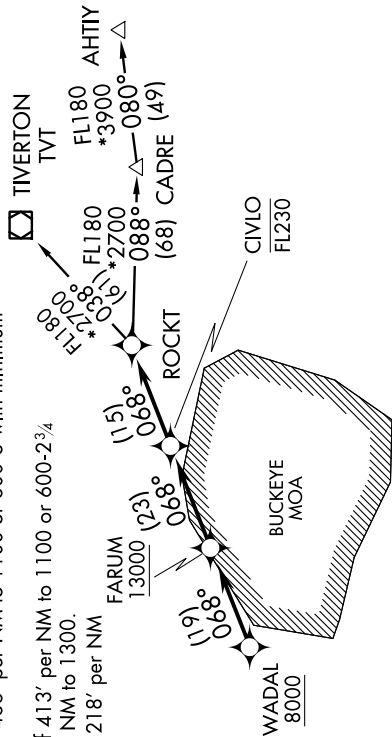
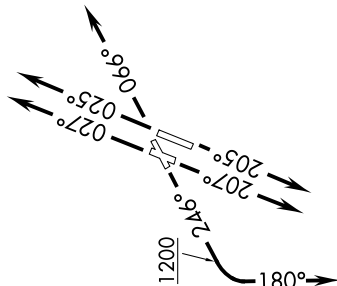
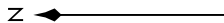


EC-2, 07 FEB 2013 to 07 MAR 2013

TAKEOFF MINIMUMS:

ATIS 120.25
 LUNKEN TOWER*
 118.7 (CTAF) 257.8
 LUNKEN GND CON
 121.9
 LUNKEN CLNC DEL
 121.9
 CINCINNATI CLNC DEL
 124.9 (when tower closed)
 CINCINNATI DEP CON
 121.0 257.725

Rwy 3L: Standard with minimum climb of 392' per NM to 1000 or 400-2 with minimum climb of 213' per NM to 1400.
 Rwy 3R: Standard with minimum climb of 355' per NM to 1000 or 400-2 with minimum climb of 231' per NM to 1400.
 Rwy 7: Standard with minimum climb of 424' per NM to 1000 or 400-1³/₄ with minimum climb of 205' per NM to 1300.
 Rwy 21R: Standard with minimum climb of 466' per NM to 1100 or 600-3 with minimum climb of 223' per NM to 1300.
 Rwy 21L: Standard with minimum climb of 413' per NM to 1100 or 600-2³/₄ with minimum climb of 228' per NM to 1300.
 Rwy 25: 600-2³/₄ with minimum climb of 218' per NM to 1300.



NOTE: Departure procedure limited to aircraft with the following destination airports and departure times:
 Anytime - ABE, AGC, ALB, AYP, BDL, BKL, BOS, BWI, CAK, CGF, CLE, LNN, LPR, MDT, MHT, PHL, PIT, PNE, PVD, PWM, SWF, TTN, UNV, and overseas flights. LGA, between 1000-1800 UTC.

NOTE: If unable to accept climb rates, advise ATC on initial contact.

NOTE: DME/DME/IRU or GPS Required.

NOTE: RADAR REQUIRED.

NOTE: RNAV 1.

NOTE: Transponder code will be issued via PDC or Cincinnati CLNC DEL.

NOTE: Accelerate to 250 KIAS, if unable, advise ATC.

NOTE: TIVERTON TRANSITION (ROCKT6.TVT) limited to aircraft landing: BKL, CAK, CLE, CGF, LNN and LPR.

(NARRATIVE ON FOLLOWING PAGE)

NOTE: Chart not to scale.