

WAAS CH <b>86701</b> <b>W25A</b>	APP CRS <b>246°</b>	Rwy Idg THRE <b>475</b> Apt Elev <b>483</b>	<b>5128</b>
--	------------------------	---	-------------

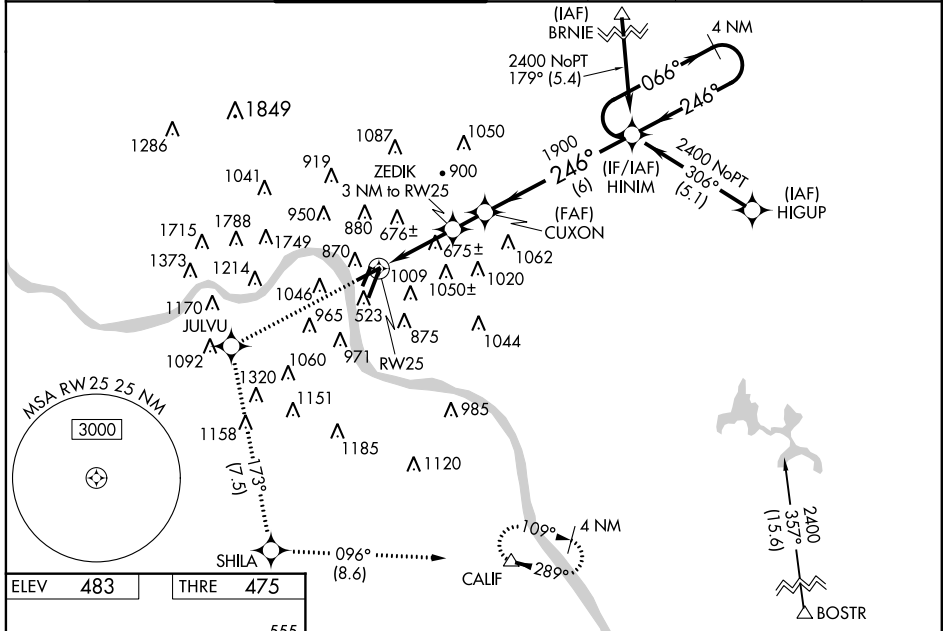
# RNAV (GPS) RWY 25

CINCINNATI MUNI AIRPORT-LUNKEN FIELD (LUK)

**⚠** Circling to Rwy 7 and 3L NA at night. Baro-VNAV NA when using Cincinnati/Northern Kentucky Intl altimeter setting. For uncompensated Baro-VNAV systems, LNAV/VNAV NA below -15°C (5°F) or above 40°C (104°F). When VGSI inop, Straight-in/Circling Rwy 25 procedure NA at night. DME/DME RNP-0.3 NA. Visibility reduction by helicopters NA. When local altimeter setting not received, use Cincinnati/Northern Kentucky Intl altimeter setting and increase all DA 86 feet and all MDA 100 feet; increase LPV all Cats visibility 3/8 mile, LNAV/VNAV all Cats and LNAV Cat B and Circling Cats B/D visibility 1/4 mile, and LNAV Cats C/D and Circling Cats C visibility 1/2 mile.

**MISSED APPROACH:** Climb to 2500 direct JULVU and on track 173° to SHILA and on track 096° to CALIF and hold, continue climb-in-hold to 2600.

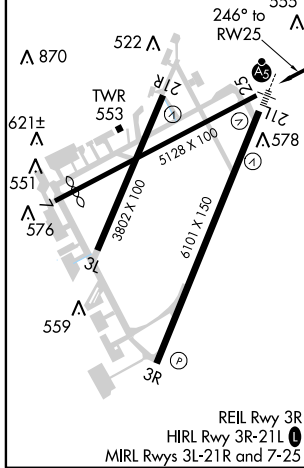
ATIS <b>120.25</b>	CINCINNATI APP CON <b>121.0 257.725</b>	LUNKEN TOWER ★ <b>118.7(CTAF) 257.8</b>	GND CON <b>121.9</b>	CLNC DEL <b>121.9</b>	CINCINNATI CLNC DEL <b>124.9</b> (when tower closed)	UNICOM <b>122.95</b>
-----------------------	--	--	-------------------------	--------------------------	--	-------------------------



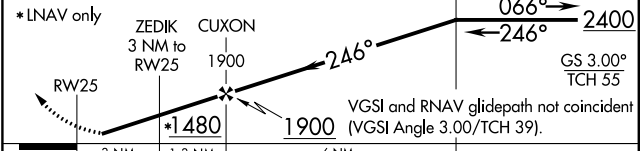
EC-2, 07 FEB 2013 to 07 MAR 2013

EC-2, 07 FEB 2013 to 07 MAR 2013

ELEV <b>483</b>	THRE <b>475</b>
-----------------	-----------------



2500	JULVU	SHILA	CALIF	4 NM Holding Pattern
↑	tr 173°	tr 096°	△	



CATEGORY	A	B	C	D
LPV DA		872-1¼	397 (400-1¼)	
LNAV/VNAV DA		1159-2½	684 (700-2½)	
LNAV MDA	1160-1	685 (700-1)	1160-2	685 (700-2)
CIRCLING	1300-1¼ 817 (900-1¼)	1360-1¼ 877 (900-1¼)	1360-2½ 877 (900-2½)	1360-2¾ 877 (900-2¾)

# RNAV (GPS) RWY 25