

WAAS CH <b>42511</b> W21A	APP CRS <b>205°</b>	Rwy Idg THRE Apt Elev	<b>6101</b> <b>475</b> <b>483</b>
---------------------------------	------------------------	-----------------------------	---

# RNAV (GPS) RWY 21L

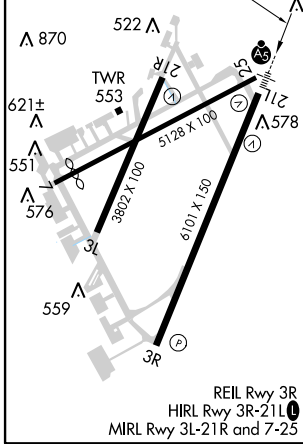
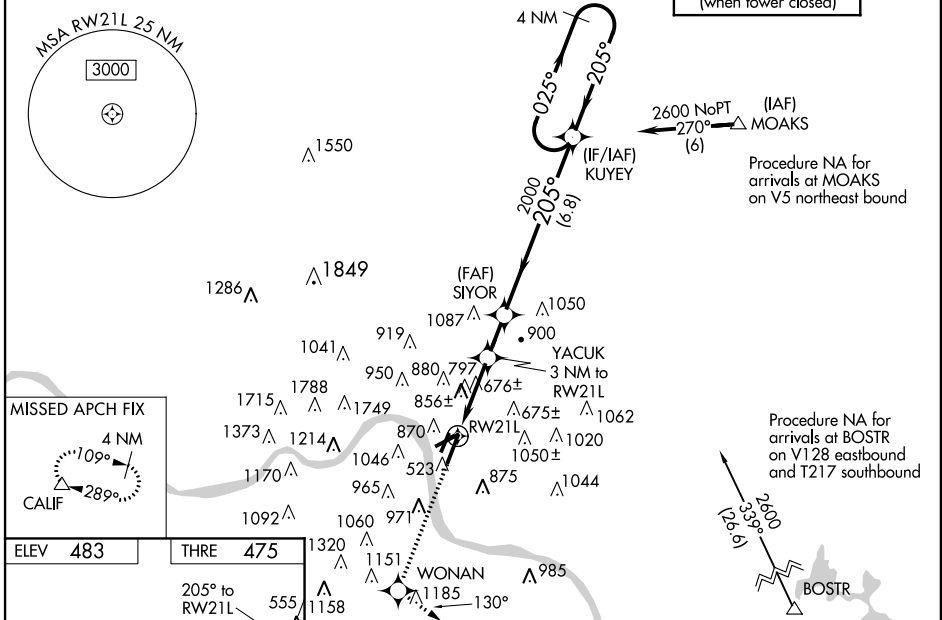
CINCINNATI MUNI AIRPORT LUNKEN FIELD (LUK)

**⚠** Circling to Rwy 3L and 7 NA at night. For uncompensated Baro-VNAV systems, LNAV/VNAV NA below -15°C (5°F) or above 41°C (105°F). DME/DME RNP-0.3 NA. Visibility reduction by helicopters NA. Baro-VNAV and VDP NA when using Cincinnati/Northern Kentucky Intl altimeter setting. When local altimeter setting not received, use Cincinnati/Northern Kentucky Intl altimeter setting and increase all DA 86 feet and all MDA 100 feet; increase LNAV/VNAV all Cats, LNAV Cats C/D and Circling Cats B and D visibility ¼ mile, Circling Cat C visibility ½ mile. For inop MALSR, increase LPV all Cats visibility to ¾ mile, LNAV/VNAV all Cats visibility to ½ mile, LNAV Cats A/B visibility to 1 mile, and LNAV Cats C/D visibility to 2 mile. For inop MALSR when using Cincinnati/Northern Kentucky Intl altimeter setting, increase LPV all Cats visibility to 1 ¼ mile, LNAV Cat A visibility to 1 mile, and LNAV Cats C/D visibility to 2 ½ mile. When VGSI inop, Circling Rwy 25 NA at night.

**MISSED APPROACH:**  
Climb to 2500 direct WONAN and on track 130° to CALIF and hold, continue Climb-In-Hold to 2600.

MALSR  
AS

ATIS <b>120.25</b>	CINCINNATI APP CON <b>121.0 257.725</b>	LUNKEN TOWER ★ <b>118.7 (CTAF) 257.8</b>	GND CON <b>121.9</b>	CLNC DEL <b>121.9</b>	CINCINNATI CLNC DEL <b>124.9</b> (when tower closed)	UNICOM <b>122.95</b>
-----------------------	--	---	-------------------------	--------------------------	--	-------------------------



CATEGORY	A	B	C	D
LPV DA		750/40	275 (300-¾)	
LNAV/VNAV DA		1198-2¼	723 (800-2¼)	
LNAV MDA	1200/40	725 (800-¾)	1200-1½	725 (800-1½)
CIRCLING	1300-1¼ 817 (900-1¼)	1360-1¼ 877 (900-1¼)	1360-2½ 877 (900-2½)	1360-2¾ 877 (900-2¾)

EC-2, 07 FEB 2013 to 07 MAR 2013

EC-2, 07 FEB 2013 to 07 MAR 2013