

LOC/DME I-LUK <b>110.9</b> Chan <b>46</b>	APP CRS <b>025°</b>	Rwy Idg TDZE Apt Elev	<b>6101</b> <b>482</b> <b>483</b>
---	------------------------	-----------------------------	---

# LOC BC RWY 3R

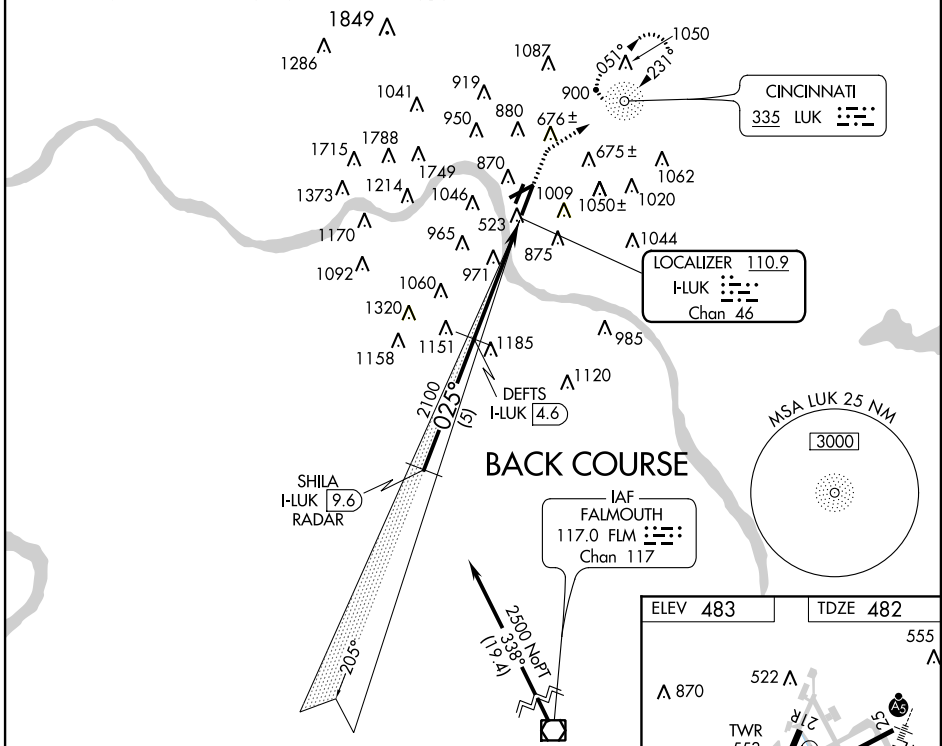
CINCINNATI MUNI AIRPORT-LUNKEN FIELD (LUK)

**⚠** LOC back course unusable beyond 10 NM.  
**⚠** LOC back course unusable 15 degrees left and right of course within 10 NM of threshold.

MISSED APPROACH: Climb to 1500 then climbing right turn to 2800 direct LUK NDB and hold.

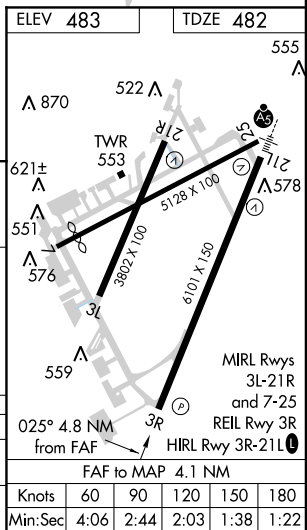
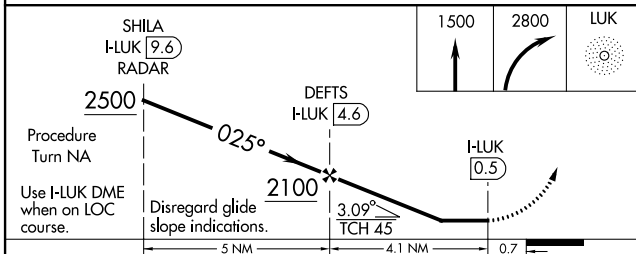
ATIS <b>120.25</b>	CINCINNATI APP CON <b>121.0 257.725</b>	LUNKEN TOWER ★ <b>118.7 (CTAF) 0 257.8</b>	GND CON <b>121.9</b>	CLNC DEL <b>121.9</b>	CINCINNATI CLNC DEL <b>124.9</b> (when tower closed)	UNICOM <b>122.95</b>
-----------------------	--	---	-------------------------	--------------------------	--	-------------------------

## DME or RADAR and ADF REQUIRED



EC-2, 07 FEB 2013 to 07 MAR 2013

EC-2, 07 FEB 2013 to 07 MAR 2013



CATEGORY	A	B	C	D
S-3R	1240-1 758 (800-1)	1240-1¼ 758 (800-1¼)	1240-2¼ 758 (800-2¼)	1240-2½ 758 (800-2½)
CIRCLING	1300-1 816 (900-1)	1360-1¼ 876 (900-1¼)	1360-2½ 876 (900-2½)	1360-2¾ 876 (900-2¾)