

LOC/DME I-LUK	APP CRS	Rwy Idg	6101
110.9	205°	THRE	475
Chan 46		Apt Elev	483

ILS or LOC RWY 21L

CINCINNATI MUNI AIRPORT LUNKEN FIELD (LUK)

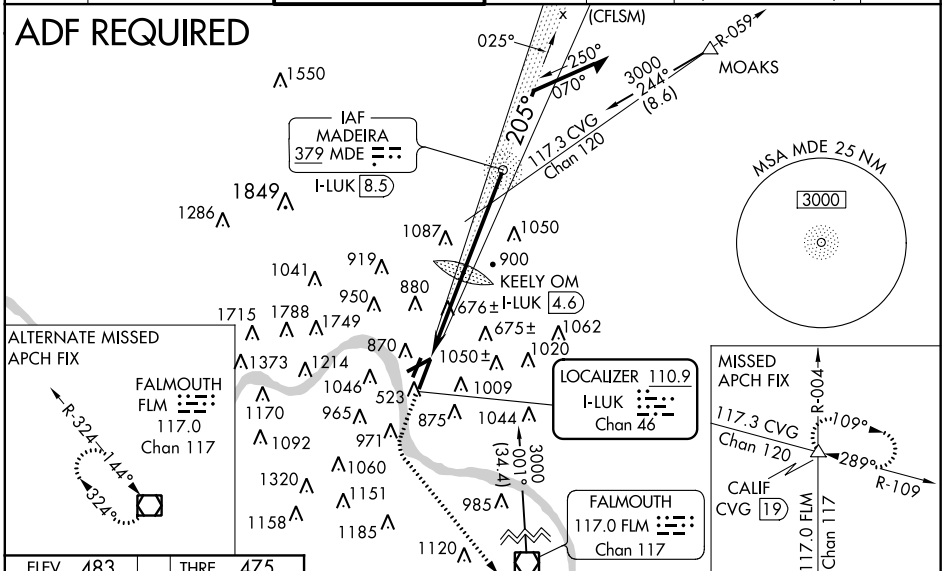
▼ Visibility reduction by helicopters NA. When local altimeter setting not received, use Cincinnati/Northern Kentucky Intl altimeter setting and increase all DA 86 feet and all MDA 100 feet; KEELY OM Minimums, increase S-LOC-21L Cat C/D visibility 1/8 mile, Circling Cats B and D visibility 1/4 mile and Circling Cat C visibility 1/2 mile. For inoperative MALSR, increase S-ILS-21L visibility to 1/8 mile all Cats, KEELY OM Minimums, increase S-LOC-21L Cat A visibility to 1 mile and Cats C/D visibility to 2 1/2 mile. VDP NA when using Cincinnati/Northern Kentucky Intl altimeter setting. Circling to Rwy 3L and 7 NA at night. When VGSi inop, Circling Rwy 25 NA at night. Inoperative table does not apply to S-LOC 21L.

MALSRL

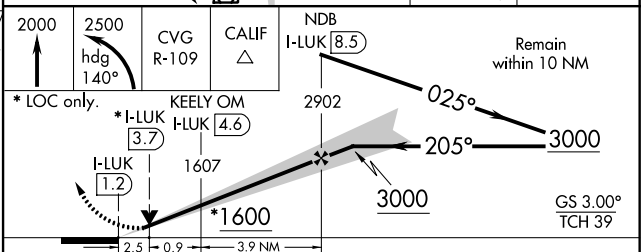
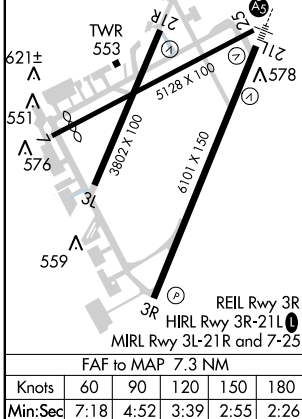
 MISSED APPROACH:
 Climb to 2000 then climbing left turn to 2500 on heading 140° and on CVG VORTAC R-109 to CALIF INT/CVG 19 DME and hold, continue climb-in-hold to 2600.

ATIS 120.25	CINCINNATI APP CON 121.0 257.725	LUNKEN TOWER ★ 118.7 (CTAF) 257.8	GND CON 121.9	CLNC DEL 121.9	CINCINNATI CLNC DEL 124.9 (when tower closed)	UNICOM 122.95
-----------------------	--	---	-------------------------	--------------------------	--	-------------------------

ADF REQUIRED



ELEV 483	THRE 475
----------	----------



CATEGORY	A	B	C	D
S-ILS 21L	750/40 275 (300-3/4)			
S-LOC 21L	1600-1 1/4 1125 (1200-1 1/4)	1600-1 1/2 1125 (1200-1 1/2)	1600-3	1125 (1200-3)
CIRCLING	1600-1 1/4 1117 (1200-1 1/4)	1600-1 1/2 1117 (1200-1 1/2)	1600-3	1117 (1200-3)
KEELY OM MINIMUMS				
S-LOC 21L	1320/40	845 (900-3/4)	1320-1 7/8	845 (900-1 7/8)
CIRCLING	1320-1 1/4 837 (900-1 1/4)	1360-1 1/4 877 (900-1 1/4)	1360-2 1/2 877 (900-2 1/2)	1360-2 3/4 877 (900-2 3/4)

EC-2, 07 FEB 2013 to 07 MAR 2013

EC-2, 07 FEB 2013 to 07 MAR 2013