

WAAS CH <b>50512</b> <b>W31A</b>	APP CRS <b>315°</b>	Rwy Idg THRE <b>612</b> Apt Elev <b>620</b>
--	------------------------	--

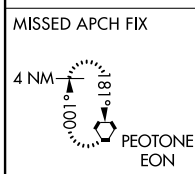
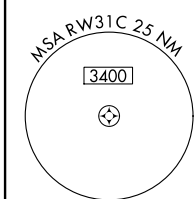
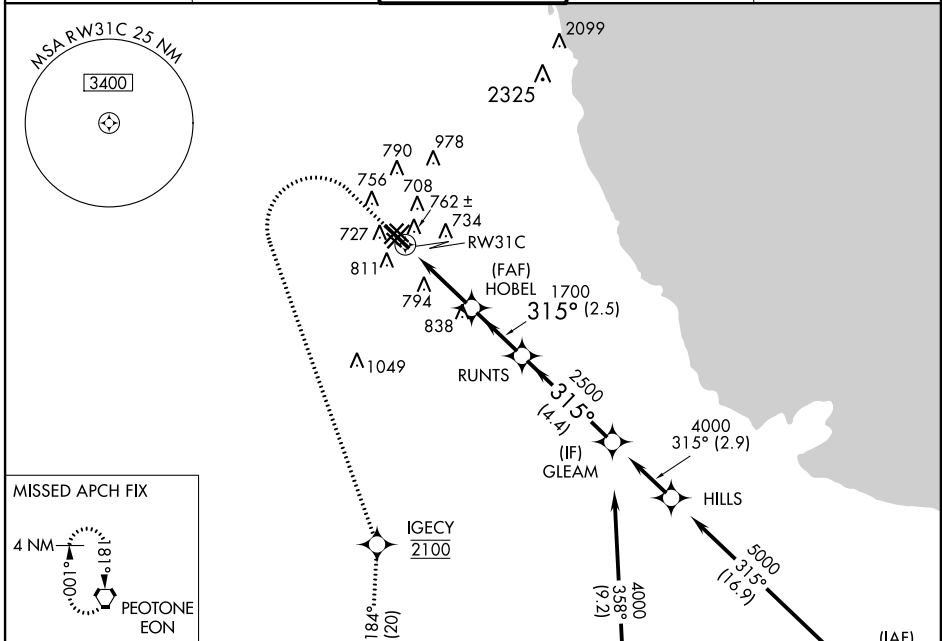
# RNAV (GPS) RWY 31C

CHICAGO MIDWAY INTL (MDW)

**▼** For uncompensated Baro-VNAV systems, LNAV/VNAV NA below -21° C (-5° F) or above 54° C (130° F). DME/DME RNP-0.3 NA. Helicopter visibility reduction below RVR 4000 NA. Circling to Rwy 4L/13C/13L/31R NA at night.

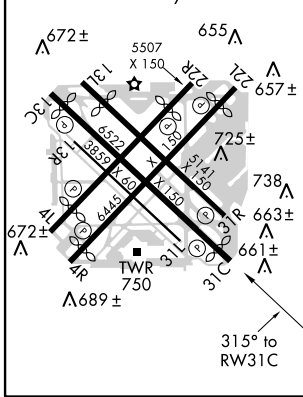
**MISSED APPROACH:** Climb to 1100 then climbing left turn to 2100 direct IGECY, to cross IGECY at 2100, then climb to 2600 on track 184° to EON VORTAC and hold.

ATIS <b>132.75</b>	CHICAGO APP CON <b>128.2 388.0</b>	MIDWAY TOWER <b>118.7 269.125</b>	GND CON <b>121.65</b>	CLNC DEL <b>124.625</b>
-----------------------	---------------------------------------	--------------------------------------	--------------------------	----------------------------

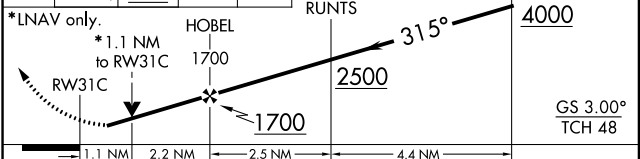


ELEV <b>620</b>	<b>D</b>	THRE <b>612</b>
-----------------	----------	-----------------

HIRL Rws 13C-31C and 4R-22L  
MIRL Rws 4L-22R, 13L-31R, and 13R-31L  
REIL Rws 4R, 22L, and 31C  
RLS Rws 13C and 31C



1100	2100	IGECY 2100	2600	EON	VGSI and RNAV glidepath not coincident (VGSI Angle 3.00/TCH 63).
↑	↙	⬠	↑	⬠	



CATEGORY	A	B	C	D
LPV DA		862/40	250 (300-1)	
LNAV/VNAV DA		923/50	311 (400-1)	
LNAV MDA	1020/55	408 (400-1/4)	1020/60	408 (400-1/4)
CIRCLING	1120-1	500 (500-1)	1120-1/2 500 (500-1/2)	1180-2 560 (600-2)

EC-3, 07 FEB 2013 to 07 MAR 2013

EC-3, 07 FEB 2013 to 07 MAR 2013