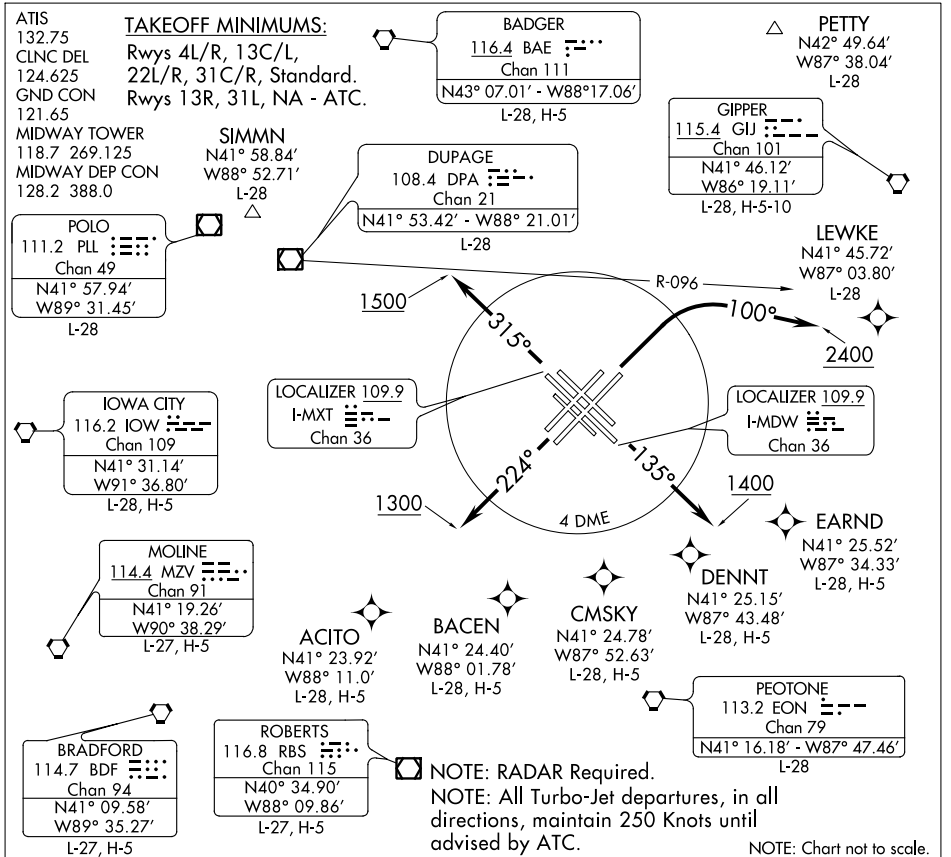


# MIDWAY EIGHT DEPARTURE

SL-81 (FAA)



EC-3, 07 FEB 2013 to 07 MAR 2013

EC-3, 07 FEB 2013 to 07 MAR 2013

## DEPARTURE ROUTE DESCRIPTION

### ALL AIRCRAFT:

**TAKEOFF RWYS 4L/R:** Northbound departures assigned headings 360° (CW) thru 080°, climbing right turn to 2400 heading 100° before proceeding on course, thence. . . .

**TAKEOFF RWY 13C:** Climb heading 135° to 1400 before turning, thence. . . .

**TAKEOFF RWY 13L:** Climb heading 135° to 1400 before turning, thence. . . .

**TAKEOFF RWY 22L:** Climb heading 224° to 1300 before turning, thence. . . .

**TAKEOFF RWY 22R:** Climb heading 224° to 1300 before turning, thence. . . .

**TAKEOFF RWY 31C:** Climb heading 315° to 1500 before turning, thence. . . .

**TAKEOFF RWY 31R:** Climb heading 315° to 1500 before turning, thence. . . .

**DME EQUIPPED AIRCRAFT:** Complete initially assigned turn within I-MXT 4 DME. Maintain 3000 feet or assigned lower altitude, thence. . . .

**NON-DME EQUIPPED AIRCRAFT:** Complete initially assigned turn south of DPA R-096, maintain 3000 feet or assigned lower altitude, thence. . . .

. . . . Expect radar vectors to first enroute fix. Expect clearance to requested altitude/flight level 10 (ten) minutes after departure.