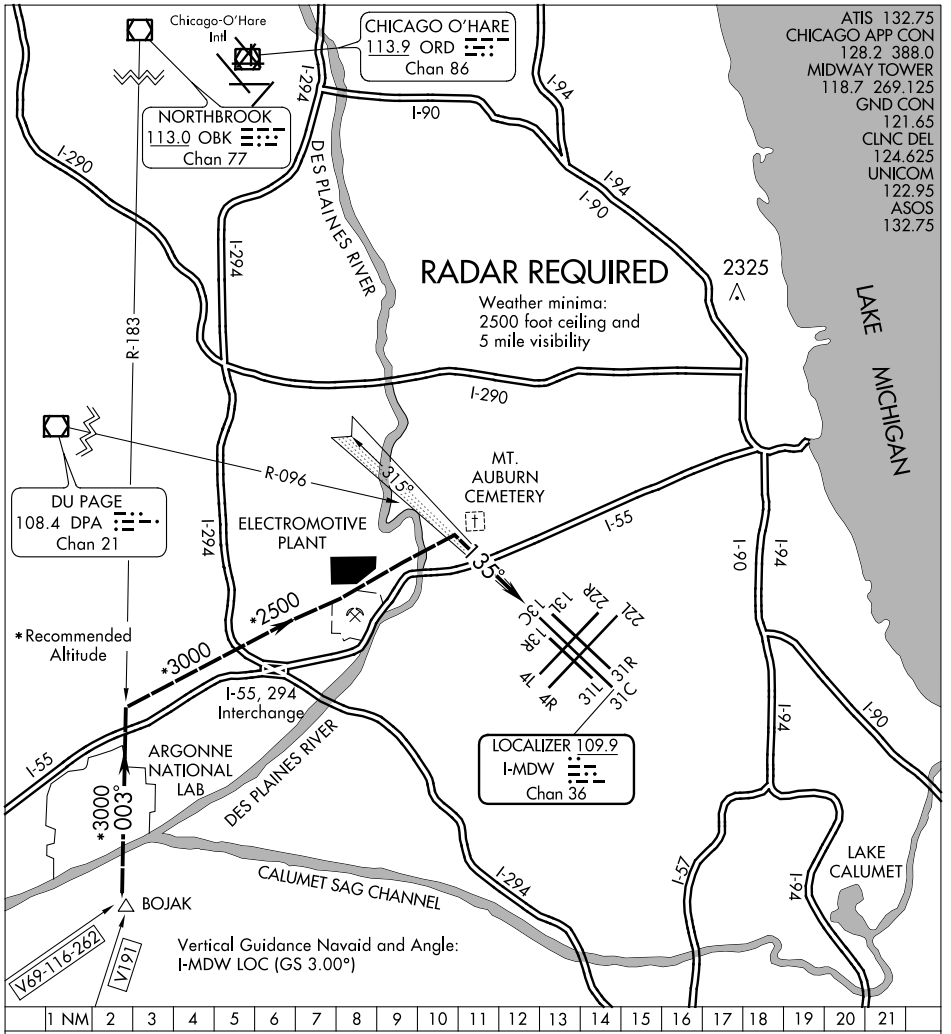


I-55 VISUAL APPROACH RWY 13C

CHICAGO MIDWAY INTL (MDW)
CHICAGO, ILLINOIS



- ATIS 132.75
- CHICAGO APP CON 128.2 388.0
- MIDWAY TOWER 118.7 269.125
- GND CON 121.65
- CLNC DEL 124.625
- UNICOM 122.95
- ASOS 132.75

RADAR REQUIRED

Weather minima:
2500 foot ceiling and
5 mile visibility

*Recommended
Altitude

Vertical Guidance Navaid and Angle:
I-MDW LOC (GS 3.00°)

I-55 APPROACH (VISUAL) RWY 13C

Radar vectors will be provided to Bojak Int via V69-116-262 or V191. When cleared for the I-55 Visual Approach aircraft are to depart Bojak Int on a 003° heading until reaching Interstate 55. Aircraft will then parallel the northside of Interstate 55 until reaching Mt. Auburn Cemetery. Aircraft will proceed from Mt. Auburn via 135° heading/MDW Localizer (109.9) to Rwy 13C. All aircraft shall remain south of the DPA VOR/DME R-096 at all times.

I-55 VISUAL APPROACH RWY 13C

EC-3, 07 FEB 2013 to 07 MAR 2013

EC-3, 07 FEB 2013 to 07 MAR 2013