

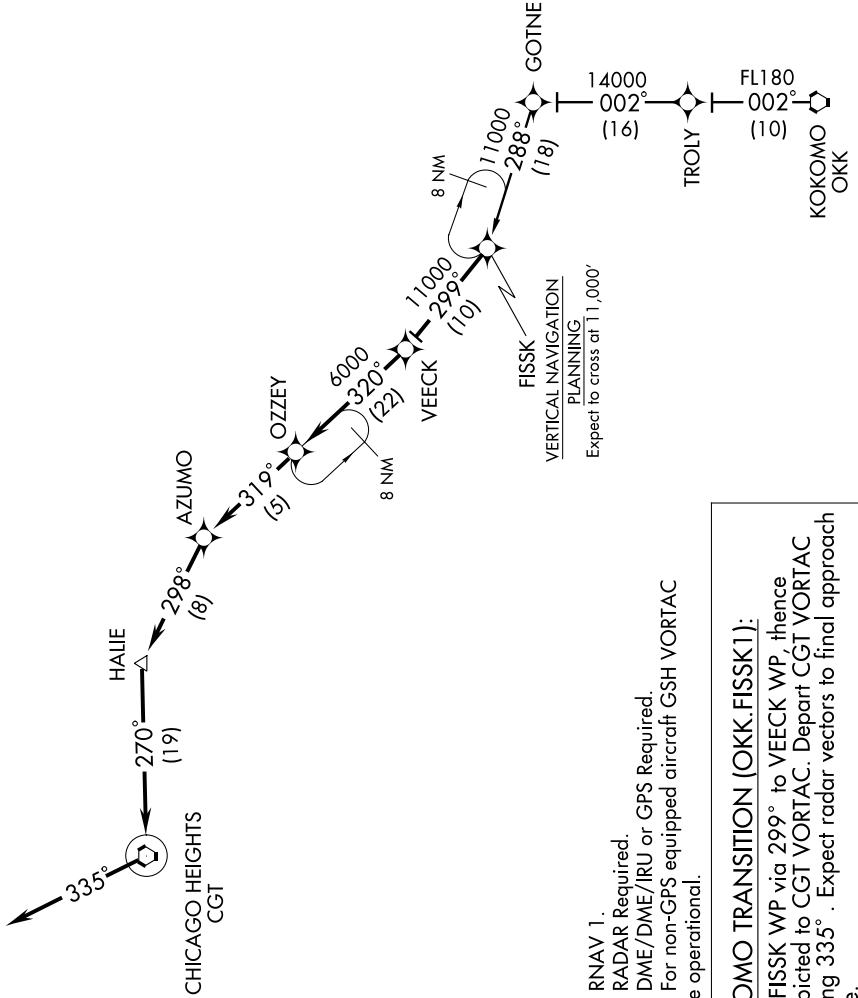
(FISSK.FISSK1) 12320

FISSK ONE ARRIVAL (RNAV)

ST-81 (FAA)

CHICAGO MIDWAY INTL
CHICAGO, ILLINOIS

CHICAGO APP CON
128.2 388.0
MIDWAY ATIS
132.75



- NOTE: RNAV 1.
- NOTE: RADAR Required.
- NOTE: DME/DME/IRU or GPS Required.
- NOTE: For non-GPS equipped aircraft GSH VORTAC must be operational.

KOKOMO TRANSITION (OKK.FISSK1):
 From FISSK WP via 299° to VEECK WP, thence as depicted to CGT VORTAC. Depart CGT VORTAC heading 335°. Expect radar vectors to final approach course.

NOTE: Chart not to scale.

EC-3, 07 FEB 2013 to 07 MAR 2013

EC-3, 07 FEB 2013 to 07 MAR 2013

FISSK ONE ARRIVAL (RNAV)
(FISSK.FISSK1) 12320

CHICAGO, ILLINOIS
CHICAGO MIDWAY INTL