

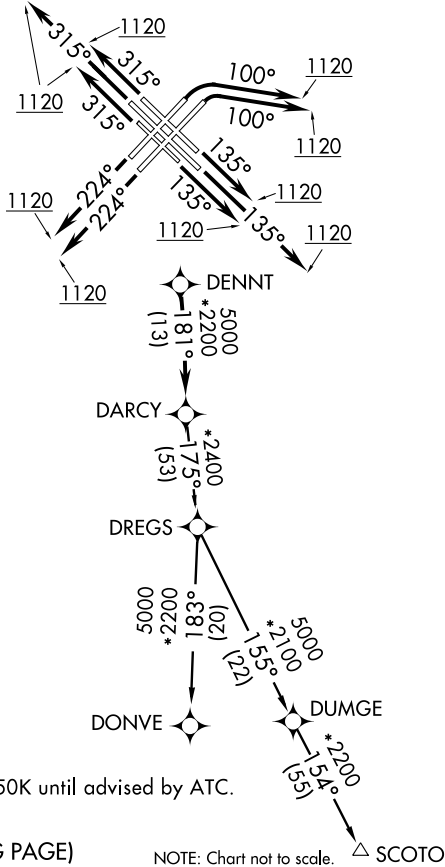
(DARCY1.DARCY) 13010

SL-81 (FAA)

CHICAGO MIDWAY INTL (MDW)
CHICAGO, ILLINOIS

DARCY ONE DEPARTURE (RNAV)

ATIS
132.75
GND CON
121.65
MIDWAY TOWER
118.7 269.125
MIDWAY DEP CON
119.35 354.075



TAKEOFF MINIMUMS:
Rwys 4L/4R, 13L/C/R,
22L/R, 31L/C/R: Standard.

- NOTE: RADAR required.
- NOTE: DME/DME/IRU or GPS required.
- NOTE: RNAV 1.
- NOTE: TURBOJET departures maintain 250K until advised by ATC.

(NOTES CONTINUED ON FOLLOWING PAGE)

NOTE: Chart not to scale.

DEPARTURE ROUTE DESCRIPTION

TAKEOFF RWYS 4L/R: Climb heading 100° or as assigned by ATC 1120, expect vectors to DENNT. Thence...

TAKEOFF RWYS 13L/C/R: Climb heading 135° or as assigned by ATC to 1120, expect vectors to DENNT. Thence...

TAKEOFF RWYS 22L/R: Climb heading 224° or as assigned by ATC 1120, expect vectors to DENNT. Thence...

TAKEOFF RWYS 31L/C/R: Climb heading 315° or as assigned by ATC to 1120, expect vectors to DENNT. Thence...

...on track 181° to DARCY, then on (Transition). Maintain 3000. Expect filed altitude 10 minutes after departure.

DONVE TRANSITION (DARCY1.DONVE)

SCOTO TRANSITION (DARCY1.SCOTO)

DARCY ONE DEPARTURE (RNAV)
(DARCY1.DARCY) 13010

CHICAGO, ILLINOIS
CHICAGO MIDWAY INTL (MDW)

EC-3, 07 FEB 2013 to 07 MAR 2013

EC-3, 07 FEB 2013 to 07 MAR 2013