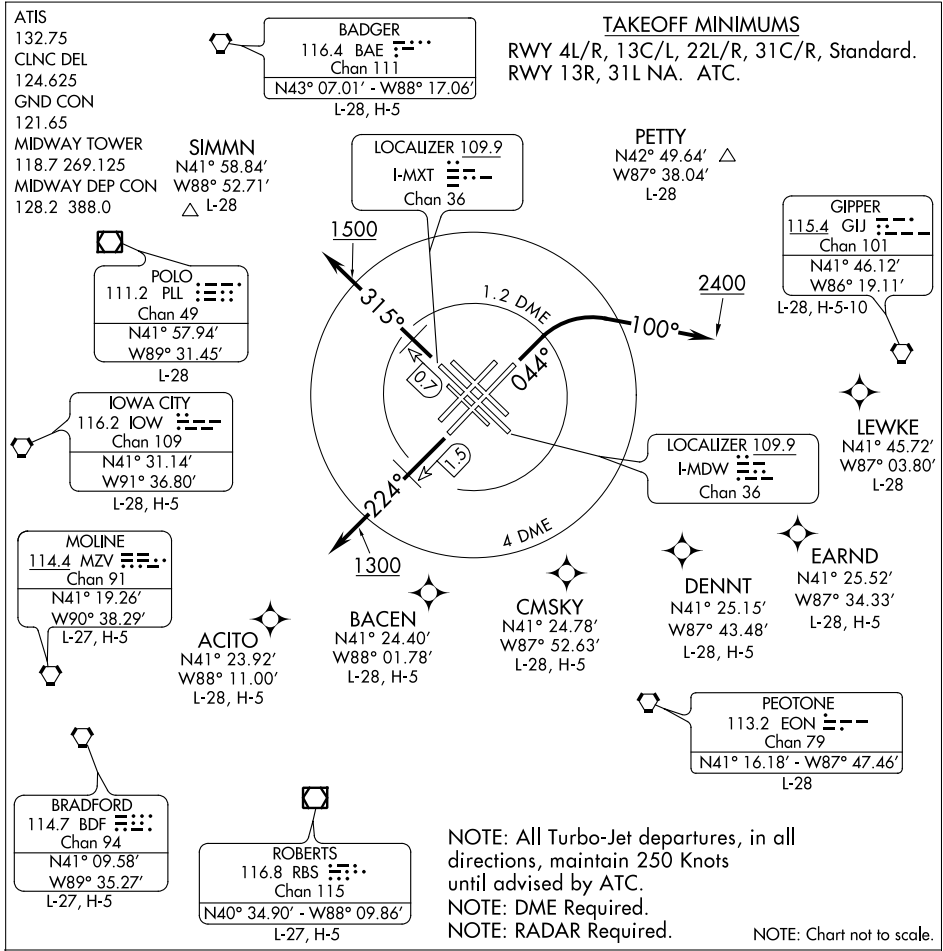


# CICERO FIVE DEPARTURE

SL-81 (FAA)

CHICAGO MIDWAY INTL (MDW)  
CHICAGO, ILLINOIS



NOTE: All Turbo-Jet departures, in all directions, maintain 250 Knots until advised by ATC.  
 NOTE: DME Required.  
 NOTE: RADAR Required.  
 NOTE: Chart not to scale.

## DEPARTURE ROUTE DESCRIPTION

**ALL AIRCRAFT:** Expect radar vectors to first enroute fix. Maintain 3000 feet or assigned lower altitude. Expect clearance to requested altitude/flight level 10 (ten) minutes after departure. Complete initially assigned turn within I-MXT 4 DME.

**TAKEOFF RWY 4R:** Northbound departures assigned headings 360° (CW) thru 080° fly heading 044° to I-MXT 1.2 DME, turn right, climb on heading 100° until leaving 2400 feet, Thence . . . .

**TAKEOFF RWY 22L:** Fly heading 224° to I-MXT 1.5 DME. Continue climb to 1300 feet. Thence . . . .

**TAKEOFF RWY 31C:** Fly heading 315° to I-MXT 0.7 DME. Continue climb to 1500'. Thence . . . .

**TAKEOFF ALL OTHER RWYS:** Fly assigned heading to I-MXT 1.2 DME. Thence . . . .  
 . . . .via tower assigned heading/vector to assigned route.

EC-3, 07 FEB 2013 to 07 MAR 2013

EC-3, 07 FEB 2013 to 07 MAR 2013