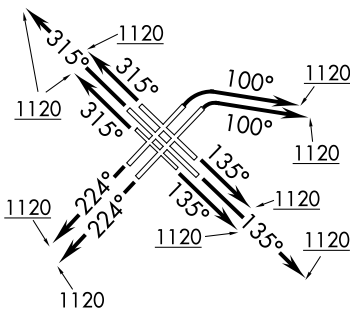


ATIS
132.75
GND CON
121.65
MIDWAY TOWER
118.7 269.125
CHICAGO DEP CON
119.35 354.075

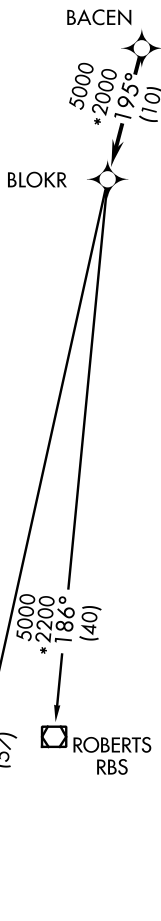
TAKEOFF MINIMUMS

Rwys 4L, 4R, 13L, 13C,
13R, 22L, 22R, 31L,
31C, 31R: Standard.



NOTE: RADAR required.
NOTE: DME/DME/IRU or
GPS required.
NOTE: RNAV 1.
NOTE: TURBOJET departures
maintain 250K until
advised by ATC.
NOTE: ROBERTS TRANSITION:
For aircraft inbound
to CMI or STL, or as
assigned by ATC.

(NOTES CONTINUED ON FOLLOWING PAGE)



DEPARTURE ROUTE DESCRIPTION

TAKEOFF RUNWAYS 4L, 4R: Climb heading 100° or as assigned by ATC to 1120, expect vectors to BACEN. Thence. . .

TAKEOFF RUNWAY 13L: Climb heading 135° or as assigned by ATC to 1120, expect vectors to BACEN. Thence. . .

TAKEOFF RUNWAY 13C: Climb heading 135° or as assigned by ATC to 1120, expect vectors to BACEN. Thence. . .

TAKEOFF RUNWAY 13R: Climb heading 135° or as assigned by ATC to 1120, expect vectors to BACEN. Thence. . .

TAKEOFF RUNWAY 22L: Climb heading 224° or as assigned by ATC to 1120, expect vectors to BACEN. Thence. . .

TAKEOFF RUNWAY 22R: Climb heading 224° or as assigned by ATC to 1120, expect vectors to BACEN. Thence. . .

TAKEOFF RUNWAY 31L: Climb heading 315° or as assigned by ATC to 1120, expect vectors to BACEN. Thence. . .

TAKEOFF RUNWAY 31C: Climb heading 315° or as assigned by ATC to 1120, expect vectors to BACEN. Thence. . .

TAKEOFF RUNWAY 31R: Climb heading 315° or as assigned by ATC to 1120, expect vectors to BACEN. Thence. . .

. . . on track 195° to BLOKR, then on (transition). Maintain 3000. Expect filed altitude 10 minutes after departure.

BEKKI TRANSITION (BLOKR1.BEKKI)
ROBERTS TRANSITION (BLOKR1.RBS):

NOTE: Chart not to scale.