

(ADELL1.ADELL) 13010

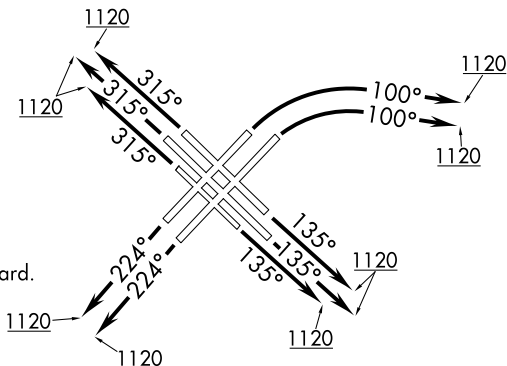
ADELL ONE DEPARTURE (RNAV)

CHICAGO MIDWAY INTL (MDW)
CHICAGO, ILLINOIS

ATIS
132.75
GND CON
121.65
MIDWAY TOWER
118.7 269.125
CHICAGO DEP CON
119.35 354.075

TAKEOFF MINIMUMS

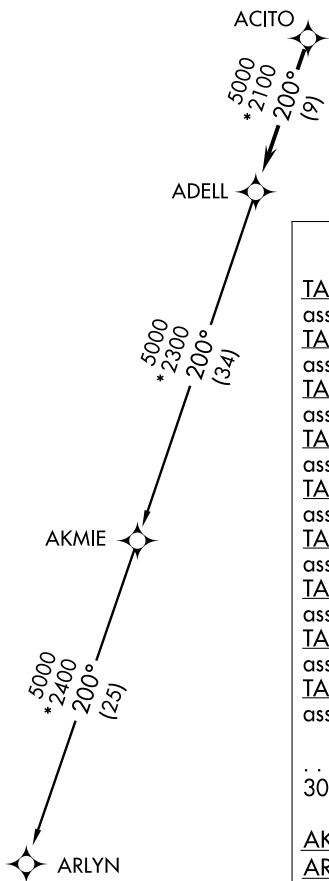
Rwys 4L, 4R, 13L, 13C, 13R,
22L, 22R, 31L, 31C, 31R: Standard.



- NOTE: RADAR required.
- NOTE: DME/DME/IRU or GPS required.
- NOTE: RNAV 1.
- NOTE: TURBOJET departures maintain 250K until advised by ATC.
- NOTE: AKMIE TRANSITION: For aircraft inbound to BML, SPI, or PIA, or as assigned by ATC.

NOTE: Chart not to scale.

EC-3, 07 FEB 2013 to 07 MAR 2013



DEPARTURE ROUTE DESCRIPTION	
<u>TAKEOFF RUNWAYS 4L, 4R:</u>	Climb heading 100° or as assigned by ATC to 1120, expect vectors to ACITO. Thence. . .
<u>TAKEOFF RUNWAY 13L:</u>	Climb heading 135° or as assigned by ATC to 1120, expect vectors to ACITO. Thence. . .
<u>TAKEOFF RUNWAY 13C:</u>	Climb heading 135° or as assigned by ATC to 1120, expect vectors to ACITO. Thence. . .
<u>TAKEOFF RUNWAY 13R:</u>	Climb heading 135° or as assigned by ATC to 1120, expect vectors to ACITO. Thence. . .
<u>TAKEOFF RUNWAY 22L:</u>	Climb heading 224° or as assigned by ATC to 1120, expect vectors to ACITO. Thence. . .
<u>TAKEOFF RUNWAY 22R:</u>	Climb heading 224° or as assigned by ATC to 1120, expect vectors to ACITO. Thence. . .
<u>TAKEOFF RUNWAY 31L:</u>	Climb heading 315° or as assigned by ATC to 1120, expect vectors to ACITO. Thence. . .
<u>TAKEOFF RUNWAY 31C:</u>	Climb heading 315° or as assigned by ATC to 1120, expect vectors to ACITO. Thence. . .
<u>TAKEOFF RUNWAY 31R:</u>	Climb heading 315° or as assigned by ATC to 1120, expect vectors to ACITO. Thence. . .
. . . . on track 200° to ADELL, then on (transition). Maintain 3000. Expect filed altitude 10 minutes after departure.	
<u>AKMIE TRANSITION (ADELL1.AKMIE)</u>	
<u>ARLYN TRANSITION (ADELL1.ARLYN)</u>	
(NOTES CONTINUED ON FOLLOWING PAGE)	

EC-3, 07 FEB 2013 to 07 MAR 2013

ADELL ONE DEPARTURE (RNAV)
(ADELL1.ADELL) 13010

CHICAGO, ILLINOIS
CHICAGO MIDWAY INTL (MDW)