

CHEYENNE, WYOMING

AL-80 (FAA)

VORTAC CYS 113.1 Chan 78	APP CRS 196°	Rwy Idg TDZE Apt Elev 6156	N/A N/A
--	------------------------	--	--------------------------

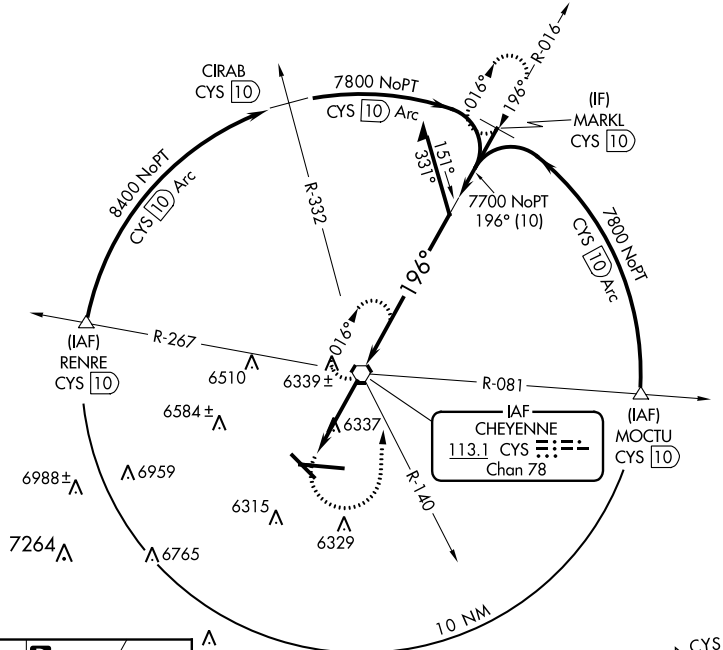
VOR or TACAN-A

CHEYENNE RGNL/JERRY OLSON FIELD (CYS)

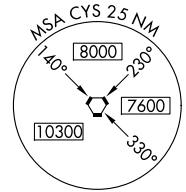
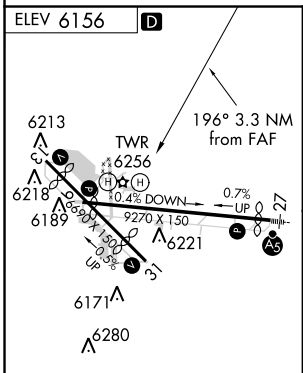
ASR/ PAR MISSED APPROACH: Climbing left turn to 8000 via heading 350° and CYS VORTAC R-140 to CYS VORTAC and hold, continue climb-in-hold to 8000 (TACAN aircraft continue via CYS R-016 to MARKL/10 DME and hold N, RT, 196° inbound.)

ATIS 134.425 278.3	CHEYENNE APP CON 124.55 263.075	CHEYENNE TOWER * 118.7 (CTAF) 257.8	GND CON 121.9 254.275	UNICOM 122.95
------------------------------	---	---	---------------------------------	-------------------------

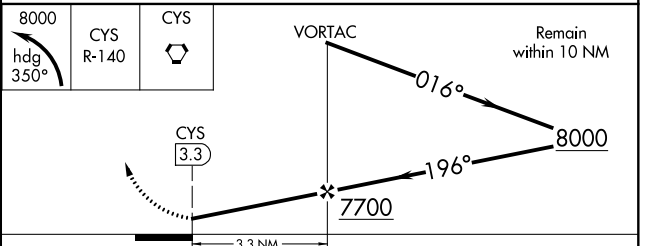
NW-1, 07 FEB 2013 to 07 MAR 2013



NW-1, 07 FEB 2013 to 07 MAR 2013



FAF to MAP 3.3 NM					
Knots	60	90	120	150	180
Min:Sec	3:18	2:12	1:39	1:19	1:06



CATEGORY	A	B	C	D
CIRCLING	6660-1	504 (600-1)	6660-1½ 504 (600-1½)	6720-2 564 (600-2)

CHEYENNE, WYOMING
Amdt 10A 11125

CHEYENNE RGNL/JERRY OLSON FIELD (CYS)
VOR or TACAN-A
41°09'N-104°49'W