

RNAV (GPS) RWY 31

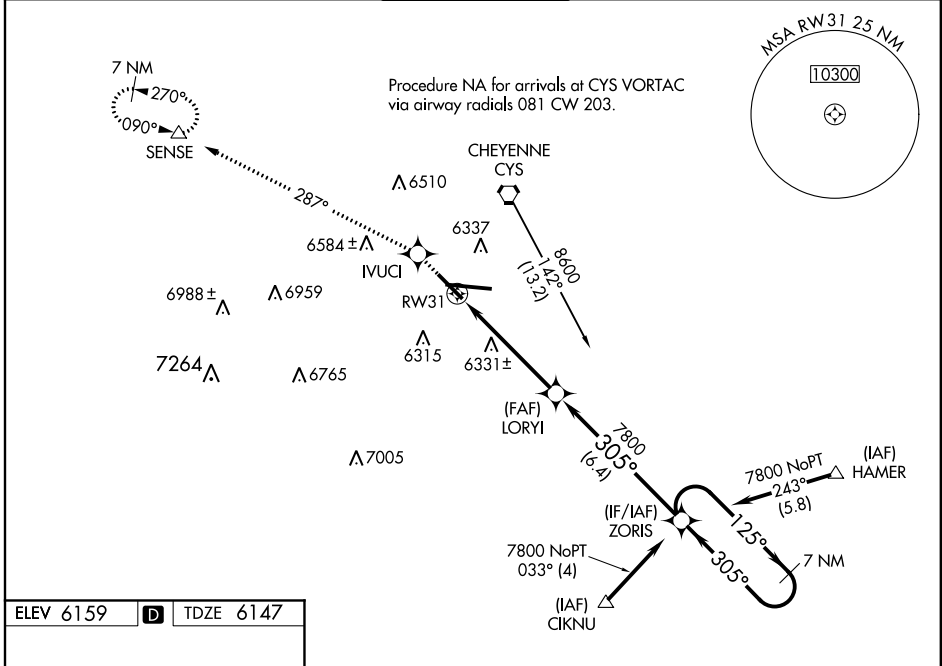
CHEYENNE RGNL/JERRY OLSON FIELD (CYS)

WAAS CH 99609 W31A	APP CRS 305°	Rwy Idg 4469 TDZE 6147 Apt Elev 6159
--	------------------------	---

⚠ For uncompensated Baro-VNAV systems, LNAV/VNAV NA below -27°C (-16°F) or above 36°C (96°F).
⚠ DME/DME RNP-0.3 NA. Visibility reduction by helicopters NA.
⚠ VDP and Baro-VNAV NA when using Laramie altimeter setting.
 When local altimeter setting not received, use Laramie altimeter setting and increase all DA/MDA 260 feet and all visibilities ¼ mile.

MISSED APPROACH: Climb to 10300 direct IVUCI and via 287° track to SENSE and hold, continue climb-in-hold to 10300.

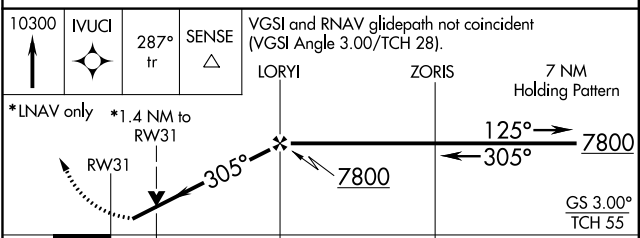
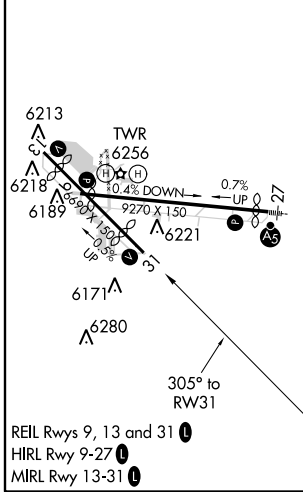
ATIS 134.425 278.3	CHEYENNE APP CON 124.55 263.075	CHEYENNE TOWER * 118.7(CTAF) 257.8	GND CON 121.9 254.275	UNICOM 122.95
------------------------------	---	--	---------------------------------	-------------------------



NW-1, 07 FEB 2013 to 07 MAR 2013

NW-1, 07 FEB 2013 to 07 MAR 2013

ELEV 6159	D	TDZE 6147
-----------	----------	-----------



CATEGORY	A	B	C	D
LPV DA	6397-1 250 (300-1)			
LNAV/VNAV DA	6545-1½ 398 (400-1½)			
LNAV MDA	6600-1	453 (500-1)	6600-1¼ 453 (500-1¼)	6600-1½ 453 (500-1½)
CIRCLING	6660-1	501 (600-1)	6660-1½ 501 (600-1½)	6720-2 561 (600-2)