

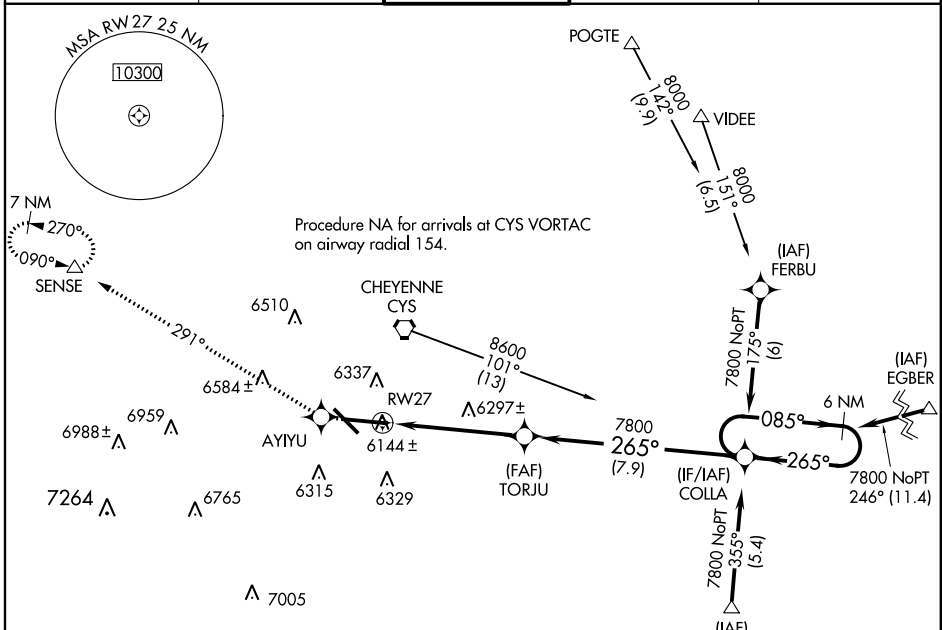
# RNAV (GPS) RWY 27

CHEYENNE RGNL/JERRY OLSON FIELD (CYS)

WAAS CH <b>70307</b> <b>W27A</b>	APP CRS <b>265°</b>	Rwy Idg TDZE Apt Elev	<b>7985</b> <b>6121</b> <b>6160</b>
--	------------------------	-----------------------------	---

ASR/PAR	Baro-VNAV NA below -27°C (-16°F). DME/DME RNP-0.3 NA.	MALSR	MISSED APPROACH: Climb to 10300 direct AYIU and via 291° track to SENSE and hold, continue climb-in-hold to 10300.
---------	--	-------	--

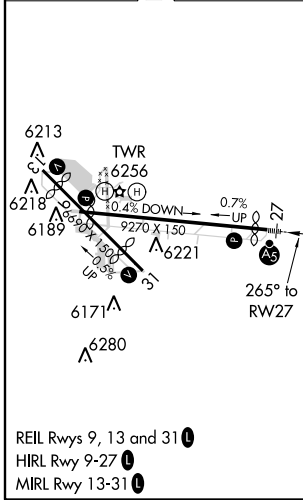
ATIS <b>134.425 278.3</b>	CHEYENNE APP CON <b>124.55 263.075</b>	CHEYENNE TOWER * <b>118.7(CTAF) 125.7.8</b>	GND CON <b>121.9 254.275</b>	UNICOM <b>122.95</b>
------------------------------	---	--	---------------------------------	-------------------------



NW-1, 07 FEB 2013 to 07 MAR 2013

NW-1, 07 FEB 2013 to 07 MAR 2013

ELEV 6160	<b>D</b>	TDZE 6121
-----------	----------	-----------



10300	AYIU	291° tr	SENSE	TORJU	COLLA	6 NM Holding Pattern
*LNAV only		*1.3 NM to RWY27		RWY27		
1.3 NM		3.8 NM		7.9 NM		
CATEGORY	A	B	C	D		
LPV DA	6380/24		259 (300-½)			
LNAV/VNAV DA	6480/40		359 (400-¾)			
LNAV MDA	6560/24	439 (400-½)	6560/40	6560/50	439 (400-1)	
CIRCLING	6660-1	500 (500-1)	6660-1½	6720-2	560 (600-2)	