

WAAS CH 56609 W13A	APP CRS 125°	Rwy Idg TDZE Apt Elev	4469 6154 6159
--	------------------------	-----------------------------	---

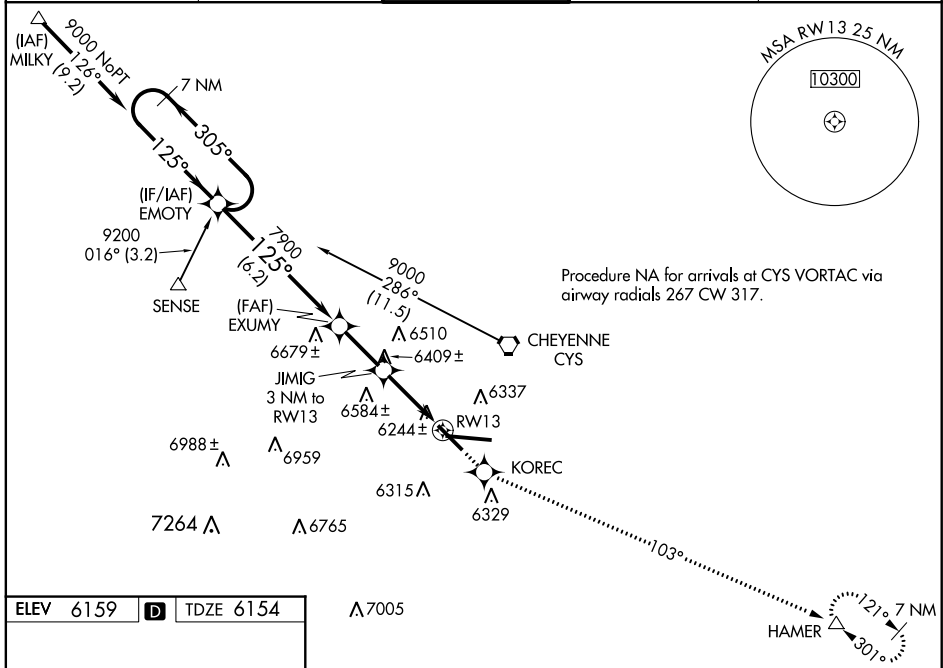
RNAV (GPS) RWY 13

CHEYENNE RGNL/JERRY OLSON FIELD (CYS)

⚠ Baro-VNAV NA when using Laramie altimeter setting.
 For uncompensated Baro-VNAV systems, LNAV/VNAV NA below -27°C (-16°F) or above 36°C (96°F).
⚠ ASR/PAR DME/DME RNP -0.3 NA. Visibility reduction by helicopters NA.
 When local altimeter setting not received, use Laramie altimeter setting and increase all DA/MDA 260 feet and all visibilities 1 mile.

MISSED APPROACH: Climb to 8500 direct KOREC and via 103° track to HAMER and hold.

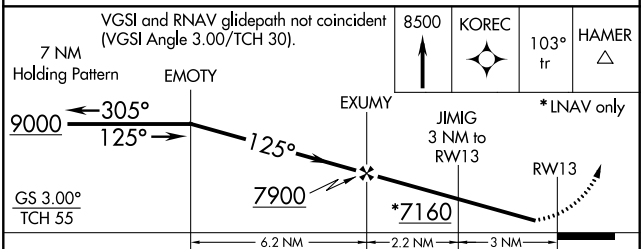
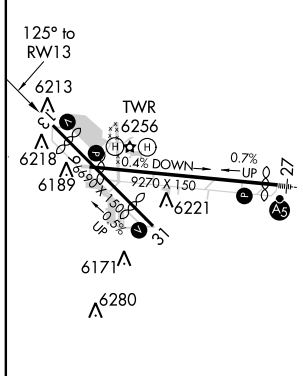
ATIS 134.425 278.3	CHEYENNE APP CON 124.55 263.075	CHEYENNE TOWER * 118.7 (CTAF) 257.8	GND CON 121.9 254.275	UNICOM 122.95
------------------------------	---	---	---------------------------------	-------------------------



NW-1, 07 FEB 2013 to 07 MAR 2013

NW-1, 07 FEB 2013 to 07 MAR 2013

ELEV 6159	D	TDZE 6154
-----------	----------	-----------



CATEGORY	A	B	C	D
LPV DA	6481-1 327 (400-1)			
LNAV/VNAV DA	6539-1½ 385 (400-1½)			
LNAV MDA	6660-1 506 (600-1)	6660-1½ 506 (600-1½)		
CIRCLING	6660-1 501 (600-1)	6660-1½ 501 (600-1½)	6720-2 561 (600-2)	

REIL Rwy 9, 13 and 31
 HIRL Rwy 9-27
 MIRL Rwy 13-31