

# RNAV (GPS) RWY 15

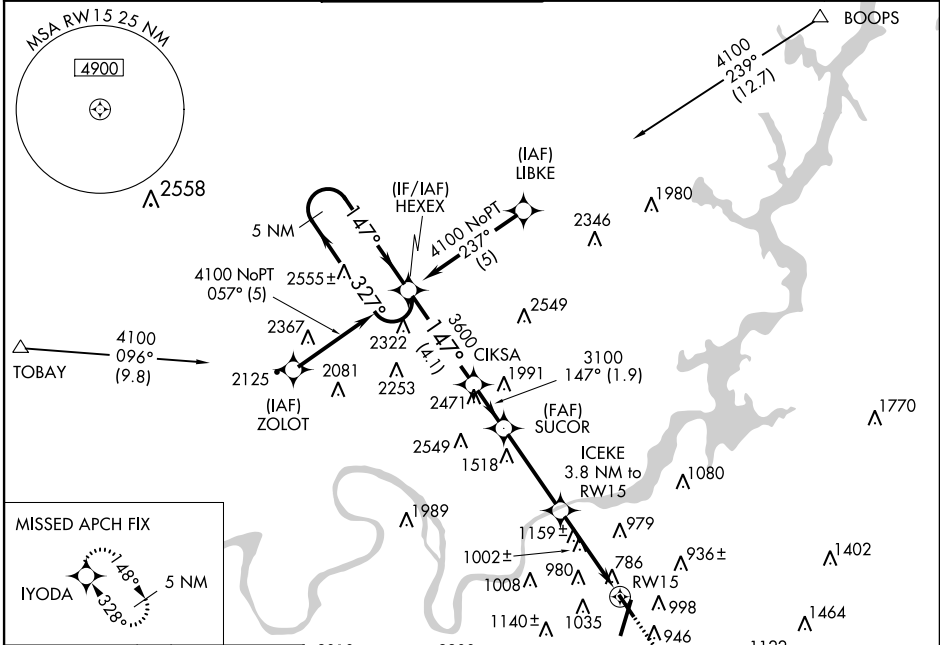
CHATTANOOGA/LOVELL FIELD (CHA)

APP CRS <b>147°</b>	Rwy Idg <b>5470</b>
	TDZE <b>671</b>
	Apt Elev <b>682</b>

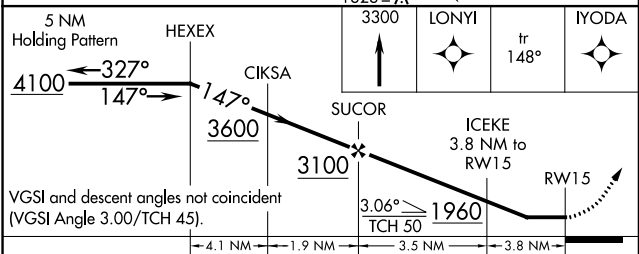
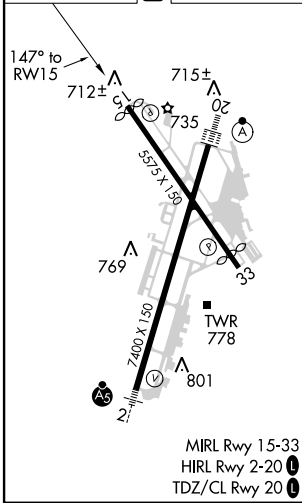
**ASR** If local altimeter setting not received, use Dalton Muni altimeter setting and increase all MDAs 80 feet. Procedure NA when control tower closed. When VGSI inoperative, Straight-in/Circling Rwy 15 NA at night. DME/DME RNP-0.3 NA.

**MISSED APPROACH:** Climb to 3300 direct LONYI and via 148° track to IYODA and hold.

ATIS <b>119.85</b>	CHATTANOOGA APP CON ★ <b>125.1 379.1</b>	CHATTANOOGA TOWER ★ <b>118.3 (CTAF) 257.8</b>	GND CON <b>121.7 348.6</b>	CLNC DEL <b>120.95 348.6</b>	UNICOM <b>122.95</b>
-----------------------	---	--	-------------------------------	---------------------------------	-------------------------



ELEV <b>682</b>	<b>D</b>	TDZE <b>671</b>
-----------------	----------	-----------------



CATEGORY	A	B	C	D
LNVA MDA	1420-1 749 (800-1)	1420-1½ 749 (800-1½)	1420-2¼ 749 (800-2¼)	1420-2½ 749 (800-2½)
CIRCLING	1420-1 738 (800-1)	1420-1½ 738 (800-1½)	1420-2¼ 738 (800-2¼)	1460-2½ 778 (800-2½)

SE-1, 07 FEB 2013 to 07 MAR 2013

SE-1, 07 FEB 2013 to 07 MAR 2013