

SE-2, 07 FEB 2013 to 07 MAR 2013

ATIS DEP

- 132.1
- CLNC DEL
- 127.15 348.6
- GND CON
- 121.8 348.6 (180°-359°)
- 121.9 348.6 (360°-179°)
- CHARLOTTE TOWER
- 118.1 257.8 (Rwys 18L-36R, 5-23)
- 126.4 257.8 (Rwy 18C-36C)
- 133.35 257.8 (Rwy 18R-36L)
- CHARLOTTE DEP CON
- 120.5 257.2

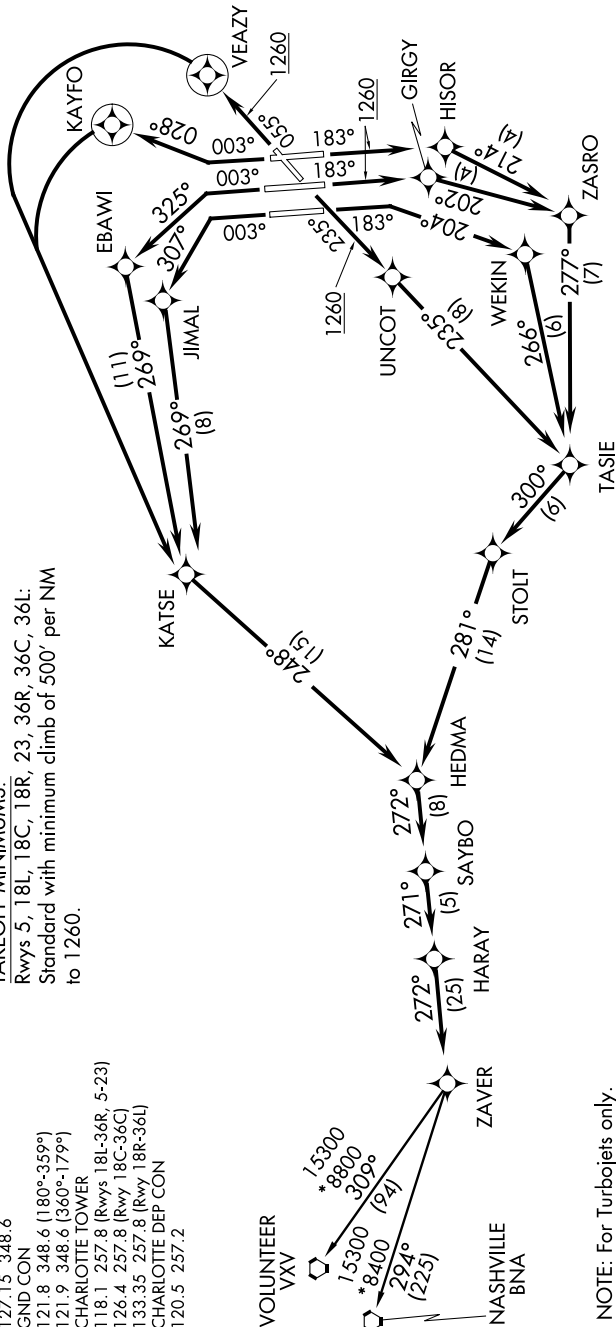
TAKEOFF MINIMUMS:

Rwys 5, 18L, 18C, 18R, 23, 36R, 36C, 36L:
Standard with minimum climb of 500' per NIM
to 1260.

VOLUNTEER
VAV

- 15300
- *8800
- 3090
- *8400 (94)
- 2940 (225)

NOTE: Chart not to scale.



- NOTE: For Turbojets only.
- NOTE: If unable to accept climb rates, advise ATC on initial contact.
- NOTE: Transponder code will be issued via PDC or Charlotte CLNC DEL.
- NOTE: DME/DME/IRU or GPS required.
- NOTE: Radar Required.
- NOTE: RNAV 1.
- NOTE: Accelerate to 250 KIAS, if unable, advise ATC.
- NOTE: Do not exceed 280 KIAS until advised by ATC.

(NARRATIVE ON FOLLOWING PAGE)

SE-2, 07 FEB 2013 to 07 MAR 2013