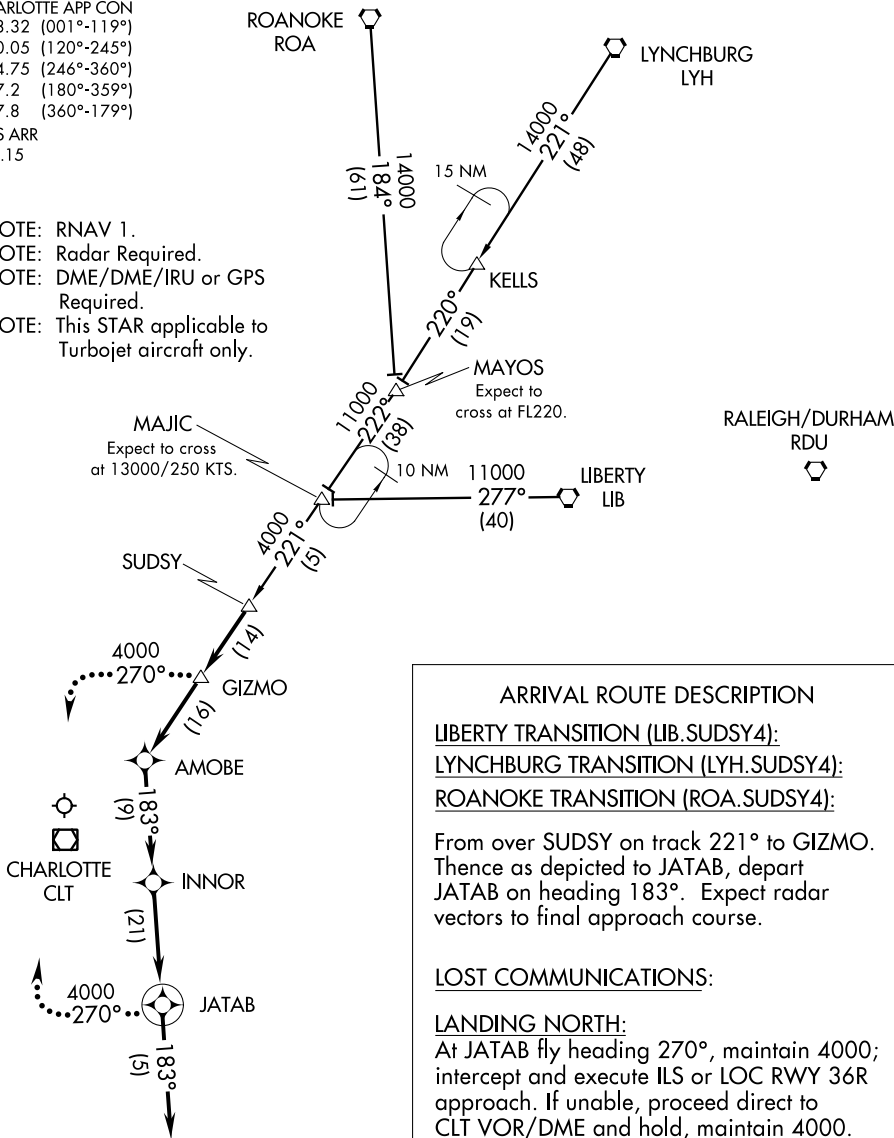


# SUDSY FOUR ARRIVAL (RNAV)

CHARLOTTE APP CON  
128.32 (001°-119°)  
120.05 (120°-245°)  
134.75 (246°-360°)  
257.2 (180°-359°)  
307.8 (360°-179°)  
ATIS ARR  
121.15

- NOTE: RNAV 1.
- NOTE: Radar Required.
- NOTE: DME/DME/IRU or GPS Required.
- NOTE: This STAR applicable to Turbojet aircraft only.



**ARRIVAL ROUTE DESCRIPTION**

LIBERTY TRANSITION (LIB.SUDSY4):  
LYNCHBURG TRANSITION (LYH.SUDSY4):  
ROANOKE TRANSITION (ROA.SUDSY4):

From over SUDSY on track 221° to GIZMO. Thence as depicted to JATAB, depart JATAB on heading 183°. Expect radar vectors to final approach course.

LOST COMMUNICATIONS:

LANDING NORTH:  
 At JATAB fly heading 270°, maintain 4000; intercept and execute ILS or LOC RWY 36R approach. If unable, proceed direct to CLT VOR/DME and hold, maintain 4000.

LANDING SOUTH:  
 At GIZMO fly heading 270°, maintain 4000; intercept and execute ILS or LOC RWY 18L approach. If unable, proceed direct to CLT VOR/DME and hold, maintain 4000.

NOTE: Chart not to scale.

# SUDSY FOUR ARRIVAL (RNAV)

SE-2, 07 FEB 2013 to 07 MAR 2013

SE-2, 07 FEB 2013 to 07 MAR 2013