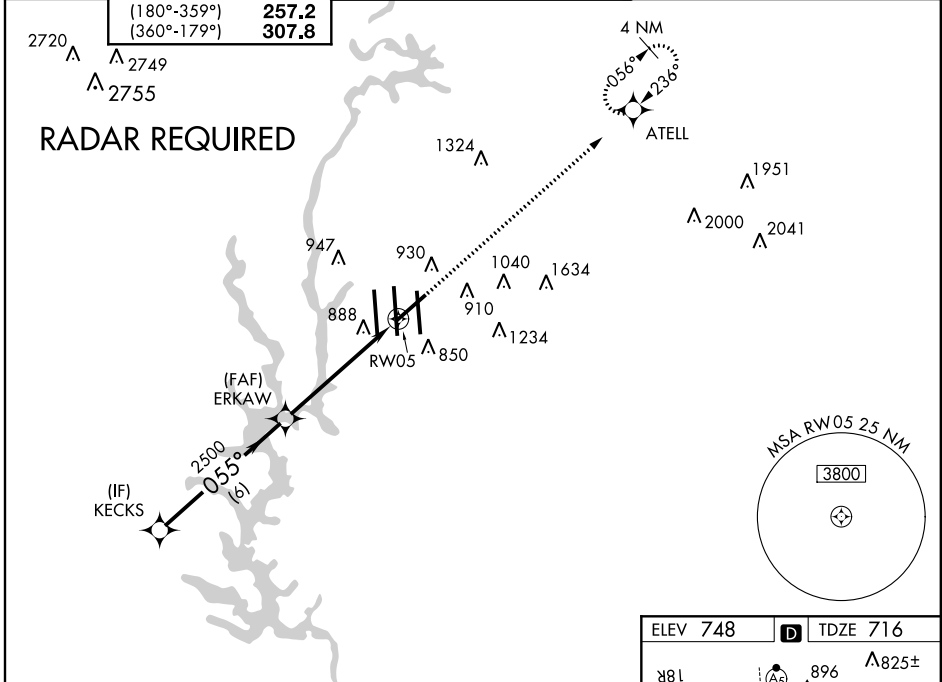


WAAS CH 70300 W05A	APP CRS 055°	Rwy Idg TDZE 716 Apt Elev 748	7092 716 748
--	------------------------	---	---

RNAV (GPS) Y RWY 5

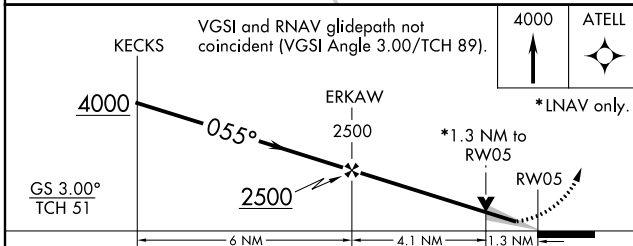
CHARLOTTE/DOUGLAS INTL (CLT)

ATIS ARR 121.15 DEP 132.1	CHARLOTTE APP CON (001°-119°) 128.32 (120°-245°) 120.05 (246°-360°) 134.75 (180°-359°) 257.2 (360°-179°) 307.8	CHARLOTTE TOWER (Rwys 18L-36R, 5-23) 118.1 257.8 (Rwy 18C-36C) 126.4 257.8 (Rwy 18R-36L) 133.35 257.8		GND CON (180°-359°) 121.8 348.6 (360°-179°) 121.9 348.6	CLNC DEL 127.15 348.6
		Circling NA at night. For inoperative MALSRL, increase LNAV Cat D visibility to RVR 6000. For uncompensated Baro-VNAV systems, LNAV/VNAV NA below -16°C (4°F) or above 47°C (116°F). DME/DME RNP-0.3 NA.		MALSRL 	MISSED APPROACH: Climb to 4000 direct ATELL and hold, continue climb-in-hold to 4000.



SE-2, 07 FEB 2013 to 07 MAR 2013

SE-2, 07 FEB 2013 to 07 MAR 2013



CATEGORY	A	B	C	D
LPV DA	916/24		200 (200-½)	
LNAV/ VNAV DA	1180/60		464 (500-1¼)	
LNAV MDA	1140/24	424 (400-½)	1140/40 424 (400-¾)	1140/50 424 (400-1)
CIRCLING	1240-1	492 (500-1)	1260-1½ 512 (600-1½)	1300-2 552 (600-2)

