

WAAS CH <b>90100</b> <b>W36D</b>	APP CRS <b>003°</b>	Rwy Idg TDZE <b>727</b> Apt Elev <b>748</b>	<b>8676</b>
--	------------------------	---	-------------

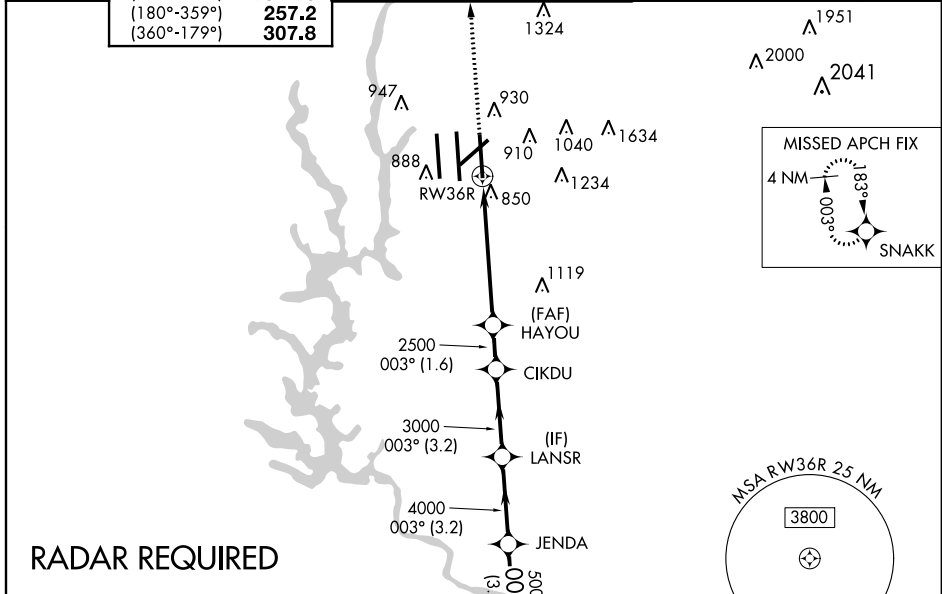
# RNAV (GPS) Y RWY 36R

CHARLOTTE/DOUGLAS INTL (CLT)

▼ Circling NA at night. For uncompensated Baro-VNAV systems, LNAV/VNAV NA below -16°C (4°F) or above 47°C (116°F). DME/DME RNP-0.3 NA. For inoperative ALSF, increase LNAV Cat D visibility to RVR 6000. Simultaneous approach authorized with ILS or LOC Rwy 36L, ILS Rwy 36L (Cat II), ILS Rwy 36L (Cat III). LNAV procedure NA during simultaneous operations. Use of FD or AP providing RNAV track guidance required during simultaneous operations.

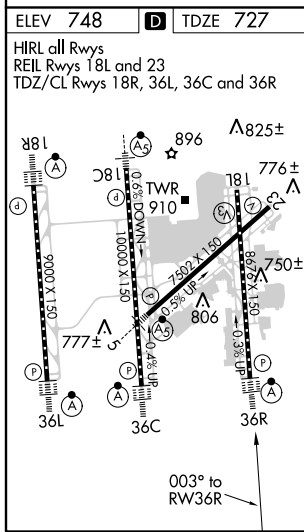
ALSF-2 	MISSED APPROACH: Climb to 3000 direct SNAKK and hold.
------------	---

ATIS ARR <b>121.15</b> DEP <b>132.1</b>	CHARLOTTE APP CON (001°-119°) <b>128.32</b> (120°-245°) <b>120.05</b> (246°-360°) <b>134.75</b> (180°-359°) <b>257.2</b> (360°-179°) <b>307.8</b>	CHARLOTTE TOWER (Rwys 18L-36R, 5-23) <b>118.1 257.8</b> (Rwy 18C-36C) <b>126.4 257.8</b> (Rwy 18R-36L) <b>133.35 257.8</b>	GND CON (180°-359°) <b>121.8 348.6</b> (360°-179°) <b>121.9 348.6</b>	CLNC DEL <b>127.15</b> <b>348.6</b>
---	--	---	---	---



SE-2, 07 FEB 2013 to 07 MAR 2013

SE-2, 07 FEB 2013 to 07 MAR 2013



3000 SNAKK	VGSi and RNAV glidepath not coincident (VGSi Angle 3.00/TCH 71).				HEKAM
↑	*RNAV only.				
	RWY 36R	HAYOU	LANSR	JENDA	HEKAM
	1 NM	4.3 NM	1.6 NM	3.2 NM	3.2 NM
		2500	3000	4000	5000
				003°	6000
					GS 3.00° TCH 58
CATEGORY	A		B		D
LPV DA	927/24		200 (200-½)		
LNAV/VNAV DA	1190/50		463 (500-1)		
LNAV MDA	1120/24		393 (400-½)		1120/50 393 (400-1)
CIRCLING	1240-1	492 (500-1)	1260-1½ 512 (600-1½)	1300-2 552 (600-2)	