

WAAS CH 56515 W36A	APP CRS 003°	Rwy Idg TDZE Apt Elev	9000 744 748
--	------------------------	-----------------------------	---

RNAV (GPS) Y RWY 36L

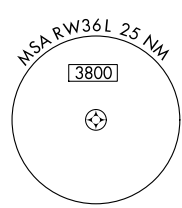
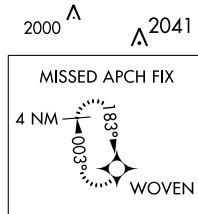
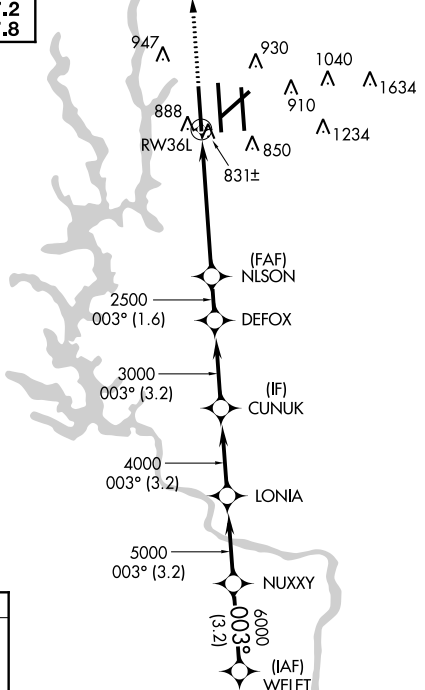
CHARLOTTE/DOUGLAS INTL (CLT)

▼ Circling NA at night. For inoperative ALSF, increase LNAV Cat D visibility to RVR 6000. For uncompensated Baro-VNAV systems, LNAV/VNAV NA below -1.6°C (4°F) or above 47°C (116°F). DME/DME RNP-0.3 NA. Simultaneous approach authorized with ILS or LOC Rwy 36R, ILS Rwy 36R Cat (II), ILS Rwy 36R Cat (III). LNAV procedure guidance required during simultaneous operations. Use of FD or AP providing RNAV track guidance required during simultaneous operations.

ALSF-2 A	MISSED APPROACH: Climb to 3000 direct WOVEN and hold.
-------------	---

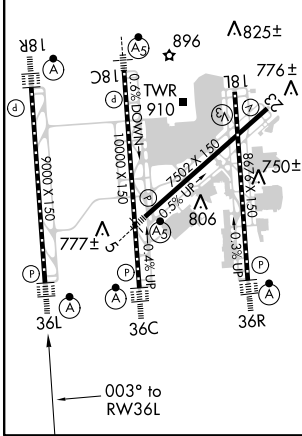
ATIS ARR 121.15 DEP 132.1	CHARLOTTE APP CON (001°-119°) 128.32 (120°-245°) 120.05 (246°-360°) 134.75 (180°-359°) 257.2 (360°-179°) 307.8	CHARLOTTE TOWER (Rwys 18L-36R, 5-23) 118.1 257.8 (Rwy 18C-36C) 126.4 257.8 (Rwy 18R-36L) 133.35 257.8	GND CON (180°-359°) 121.8 348.6 (360°-179°) 121.9 348.6	CLNC DEL 127.15 348.6
---	--	---	---	---

RADAR REQUIRED

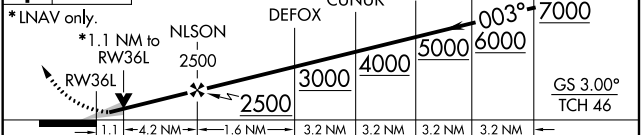


ELEV 748	D	TDZE 744
----------	----------	----------

HIRL all Rwys
REIL Rwys 18L and 23
TDZ/CL Rwys 18R, 36L, 36C and 36R



3000 WOVEN VGSi and RNAV glidepath not coincident (VGSi Angle 3.00/TCH 55).
*LNAV only. *1.1 NM to RW36L



CATEGORY	A	B	C	D
LPV DA	944/24		200 (200-½)	
LNAV/VNAV DA	1113/40		369 (400-¾)	
LNAV MDA	1140/24		396 (400-½)	
CIRCLING	1240-1		1260-1½	
	492 (500-1)		512 (600-1½)	
			1140/50	
			396 (400-1)	
			1300-2	
			552 (600-2)	

SE-2, 07 FEB 2013 to 07 MAR 2013

SE-2, 07 FEB 2013 to 07 MAR 2013