

WAAS CH <b>45906</b> <b>W23A</b>	APP CRS <b>236°</b>	Rwy Idg TDZE <b>747</b> Apt Elev <b>748</b>	<b>7502</b>
--	------------------------	---	-------------

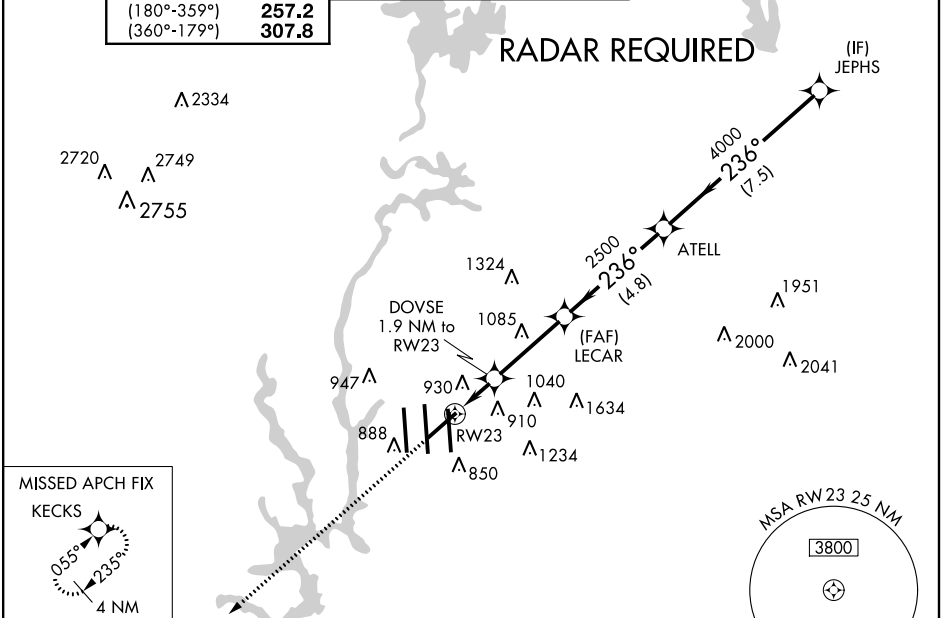
# RNAV (GPS) Y RWY 23

CHARLOTTE/DOUGLAS INTL (CLT)

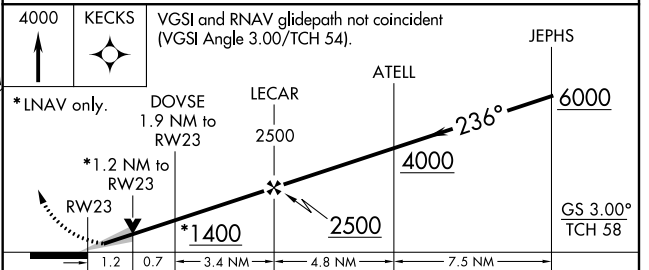
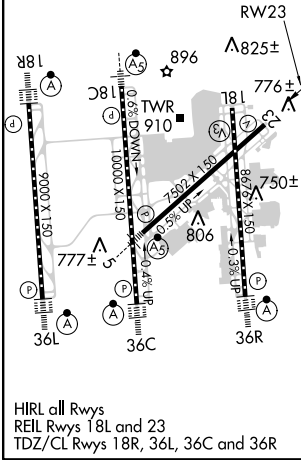
▼ Circling NA at night. For uncompensated Baro-VNAV systems, LNAV/VNAV NA below -16°C (4°F) or above 47°C (116°F). DME/DME RNP-0.3 NA.

MISSED APPROACH: Climb to 4000 direct KECKS and hold, continue climb-in-hold to 4000.

ATIS ARR <b>121.15</b> DEP <b>132.1</b>	CHARLOTTE APP CON (001°-119°) <b>128.32</b> (120°-245°) <b>120.05</b> (246°-360°) <b>134.75</b> (180°-359°) <b>257.2</b> (360°-179°) <b>307.8</b>	CHARLOTTE TOWER (Rwys 18L-36R, 5-23) <b>118.1 257.8</b> (Rwy 18C-36C) <b>126.4 257.8</b> (Rwy 18R-36L) <b>133.35 257.8</b>	GND CON (180°-359°) <b>121.8 348.6</b> (360°-179°) <b>121.9 348.6</b>	CLNC DEL <b>127.15</b> <b>348.6</b>
---	--	---	---	---



ELEV <b>748</b>	<b>D</b>	TDZE <b>747</b>
-----------------	----------	-----------------



CATEGORY	A	B	C	D
LPV DA		947/40	200 (200-3/4)	
LNAV/VNAV DA		1222-13/4	475 (500-13/4)	
LNAV MDA	1180/50	433 (500-1)	1180/60 433 (500-11/4)	1180-11/2 433 (500-11/2)
CIRCLING	1240-1	492 (500-1)	1260-11/2 512 (600-11/2)	1300-2 552 (600-2)

SE-2, 07 FEB 2013 to 07 MAR 2013

SE-2, 07 FEB 2013 to 07 MAR 2013