

WAAS CH 82415 W18D	APP CRS 183°	Rwy Idg TDZE Apt Elev	9000 744 748
--	------------------------	-----------------------------	---

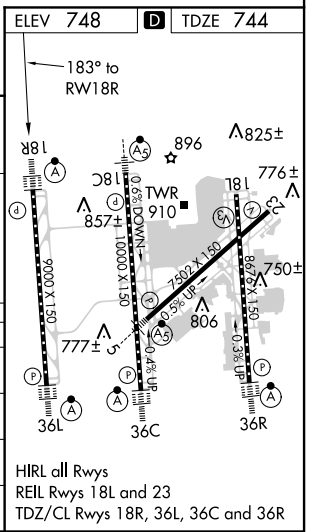
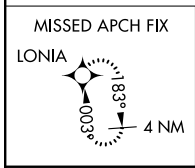
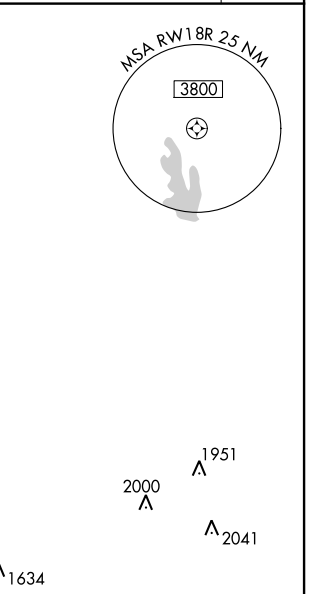
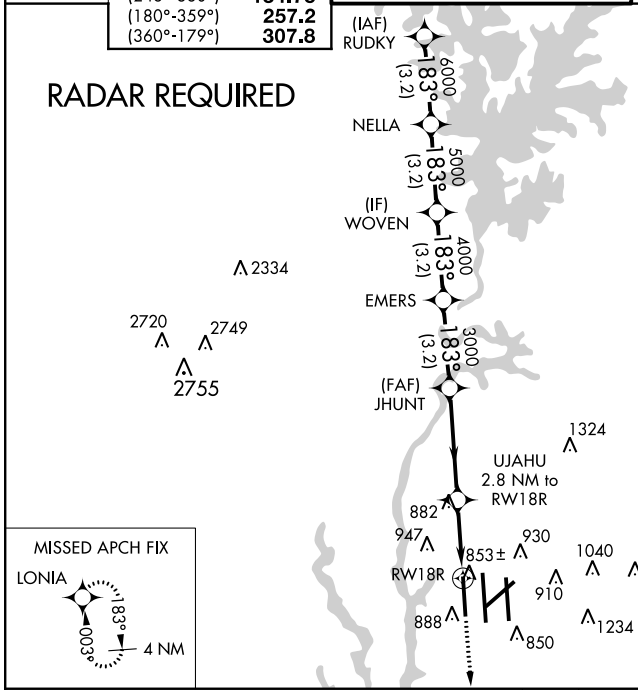
RNAV (GPS) Y RWY 18R

CHARLOTTE/DOUGLAS INTL (CLT)

⚠ Circling NA at night. For inoperative ALSF, increase LNAV Cat D visibility to RVR 6000. For uncompensated Baro-VNAV systems, LNAV/VNAV NA below -16°C (4°F) or above 47°C (116°F). DME/DME RNP-0.3 NA. Simultaneous approach authorized with ILS or LOC Rwy 18L. LNAV Procedure NA during simultaneous operations. Use of FD or AP providing RNAV track guidance required during simultaneous operations.

ALSF-2 	MISSED APPROACH: Climb to 3000 direct LONIA and hold.
------------	--

ATIS ARR 121.15 DEP 132.1	CHARLOTTE APP CON (001°-119°) 128.32 (120°-245°) 120.05 (246°-360°) 134.75 (180°-359°) 257.2 (360°-179°) 307.8	CHARLOTTE TOWER (Rwys 18L-36R, 5-23) 118.1 257.8 (Rwy 18C-36C) 126.4 257.8 (Rwy 18R-36L) 133.35 257.8	GND CON (180°-359°) 121.8 348.6 (360°-179°) 121.9 348.6	CLNC DEL 127.15 348.6
---	--	---	---	---



RUDKY	NELLA	WOVEN	EMERS	JHUNT	UJAHU	LONIA
7000	6000	5000	4000	3000	2800	3000
GS 3.00° TCH 46				*1.680		
-3.2 NM		-3.2 NM		-3.2 NM		-1.6 NM

CATEGORY	A	B	C	D
LPV DA	944/24		200 (200-½)	
LNAV/VNAV DA	1262/60		518 (600-¼)	
LNAV MDA	1160/24	416 (500-½)	1160/40 416 (500-¾)	1160/50 416 (500-1)
CIRCLING	1240-1	492 (500-1)	1260-1½ 512 (600-1½)	1300-2 552 (600-2)

SE-2, 07 FEB 2013 to 07 MAR 2013

SE-2, 07 FEB 2013 to 07 MAR 2013