

WAAS CH 77500 W18A	APP CRS 183°	Rwy Idg TDZE 748 Apt Elev 748	8676 748 748
--	------------------------	---	---

RNAV (GPS) Y RWY 18L

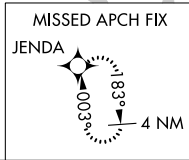
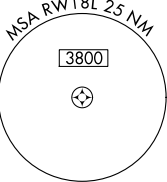
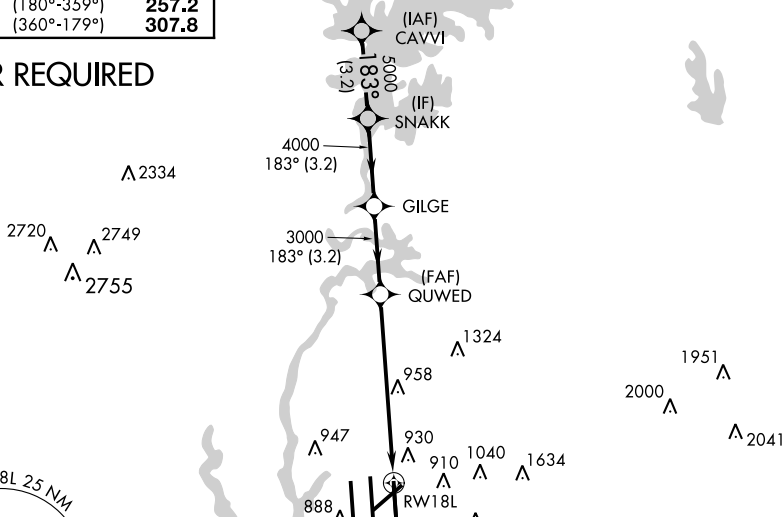
CHARLOTTE/DOUGLAS INTL (CLT)

⚠ Circling NA at night. For uncompensated Baro-VNAV systems, LNAV/VNAV NA below -16°C (4°F) or above 47°C (116°F). DME/DME RNP-0.3 NA. Visibility reduction by helicopters NA. Simultaneous approach authorized with ILS or LOC Rwy 18R, ILS Rwy 18R (Cat III), ILS Rwy 18R (Cat III). LNAV procedure NA during simultaneous operations. Use of FD or AP providing RNAV track guidance required during simultaneous operations.

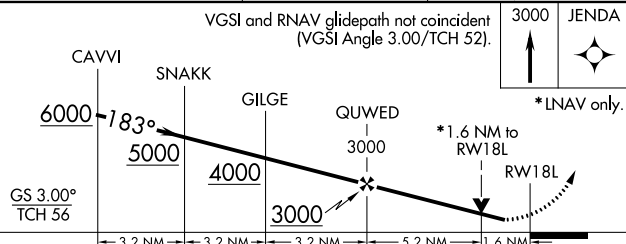
MISSED APPROACH:
Climb to 3000 direct
JENDA and hold.

ATIS	CHARLOTTE APP CON	CHARLOTTE TOWER	GND CON	CLNC DEL
ARR 121.15 DEP 132.1	(001°-119°) 128.32 (120°-245°) 120.05 (246°-360°) 134.75 (180°-359°) 257.2 (360°-179°) 307.8	(Rwys 18L-36R, 5-23) 118.1 257.8 (Rwy 18C-36C) 126.4 257.8 (Rwy 18R-36L) 133.35 257.8	(180°-359°) 121.8 348.6 (360°-179°) 121.9 348.6	127.15 348.6

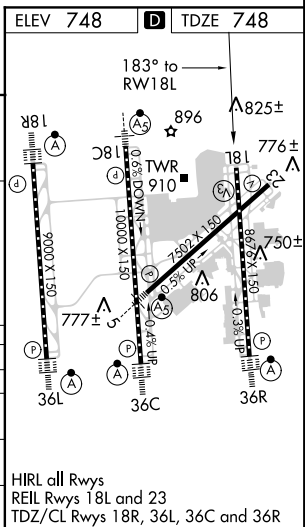
RADAR REQUIRED



VGSI and RNAV glidepath not coincident (VGSI Angle 3.00/TCH 52).



CATEGORY	A	B	C	D
LPV DA		1083/60	335 (400-1¼)	
LNAV/VNAV DA		1222-1¾	474 (500-1¾)	
LNAV MDA	1260/50	512 (600-1)	1260-1½ 512 (600-1½)	1260-1¾ 512 (600-1¾)
CIRCLING	1260-1	512 (600-1)	1260-1½ 512 (600-1½)	1300-2 552 (600-2)



SE-2, 07 FEB 2013 to 07 MAR 2013

SE-2, 07 FEB 2013 to 07 MAR 2013