

WAAS CH 81800 W18B	APP CRS 183°	Rwy Idg 10000 TDZE 742 Apt Elev 748
--	------------------------	--

RNAV (GPS) Y RWY 18C

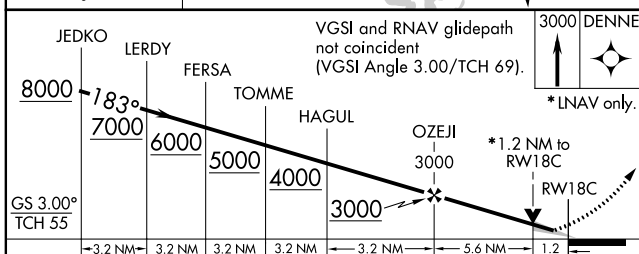
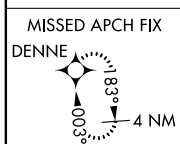
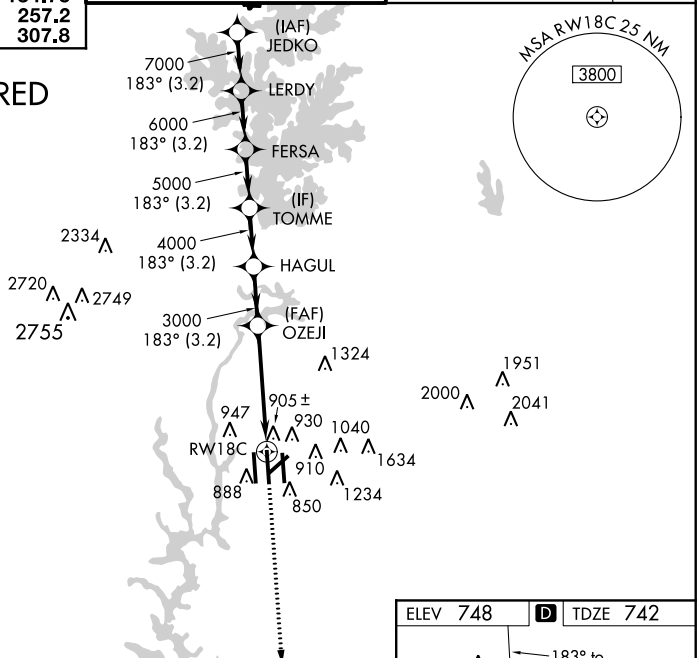
CHARLOTTE/DOUGLAS INTL (CLT)

▼ Circling NA at night. For uncompensated Baro-VNAV systems, LNAV/VNAV NA below -16°C (4°F) or above 47°C (116°F). DME/DME RNP-0.3 NA. Simultaneous approach authorized with ILS or LOC Rwy 18L, ILS or LOC Rwy 18R, ILS Rwy 18R (Cat II), ILS Rwy 18R (Cat III). LNAV procedure NA during simultaneous operations. Use of FD or AP providing RNAV track guidance required during simultaneous operations.

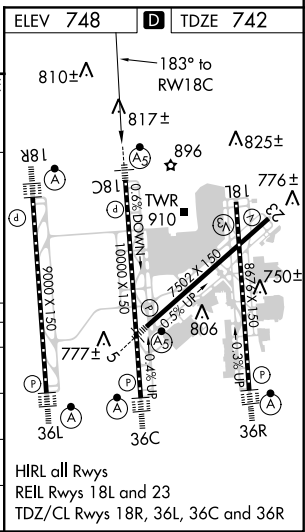
MALS R	MISSED APPROACH: Climb to 3000 direct DENNE and hold.
--------	--

ATIS	CHARLOTTE APP CON	CHARLOTTE TOWER	GND CON	CLNC DEL
ARR 121.15	(001°-119°) 128.32 (120°-245°) 120.05 (246°-360°) 134.75 (180°-359°) 257.2 (360°-179°) 307.8	(Rwys 18L-36R, 5-23) 118.1 257.8 (Rwy 18C-36C) 126.4 257.8 (Rwy 18R-36L) 133.35 257.8	(180°-359°) 121.8 348.6 (360°-179°) 121.9 348.6	127.15 348.6

RADAR REQUIRED



CATEGORY	A	B	C	D
LPV DA	942/24		200 (200-½)	
LNAV/VNAV DA	1192/50		450 (500-1)	
LNAV MDA	1200/24	458 (500-½)	1200/40 458 (500-¾)	1200/50 458 (500-1)
CIRCLING	1240-1	492 (500-1)	1260-1½ 512 (600-1½)	1300-2 552 (600-2)



SE-2, 07 FEB 2013 to 07 MAR 2013

SE-2, 07 FEB 2013 to 07 MAR 2013