

APP CRS	Rwy Idg	<b>8676</b>
<b>003°</b>	TDZE	<b>748</b>
	Apt Elev	<b>748</b>

# RNAV (RNP) Z RWY 36R

CHARLOTTE/DOUGLAS INTL (CLT)

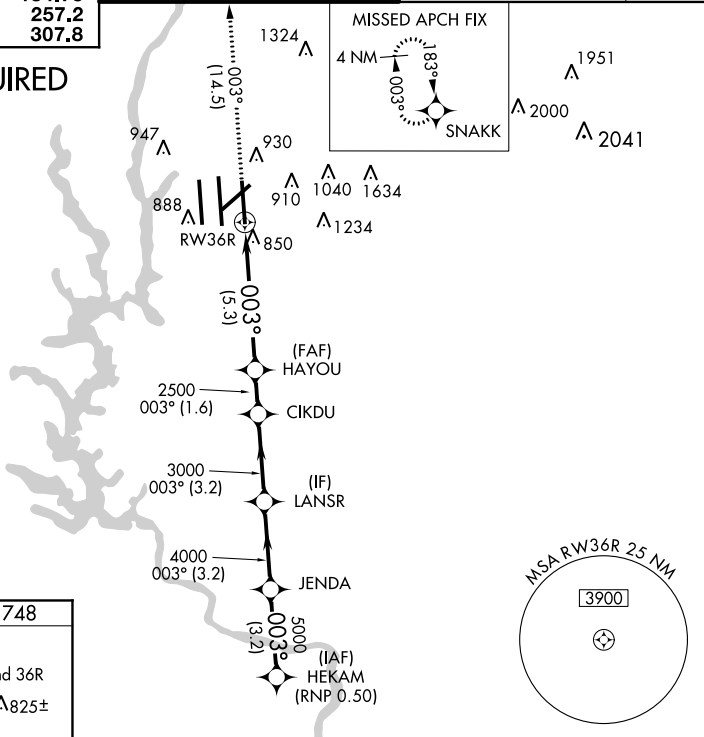
▼ GPS Required. For uncompensated Baro-VNAV systems, procedure NA below -10°C (14°F) or above 47°C (117°F). Circling NA at night. Simultaneous approach authorized with ILS or LOC Rwy 36L, ILS Rwy 36L (Cat II), ILS Rwy 36L (Cat III). Use of FD or AP providing RNAV track guidance required during simultaneous operations. Visibility reduction by helicopters NA. For inoperative ALSF, increase RNP 0.30 visibility all Cats to 1½ mile.



MISSED APPROACH:  
Climb to 3000 via track 003° to SNAKK and hold.

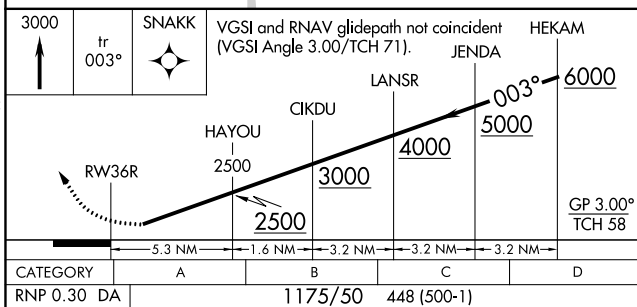
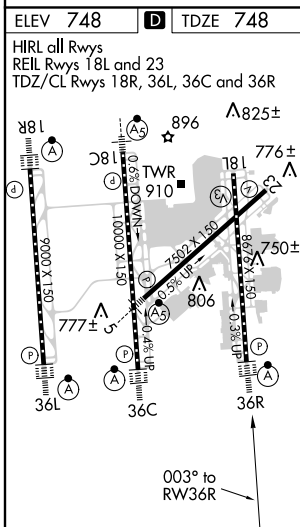
ATIS	CHARLOTTE APP CON	CHARLOTTE TOWER	GND CON	CLNC DEL
ARR <b>121.15</b>	(001°-119°) <b>128.32</b>	(Rwys 18L-36R, 5-23) <b>118.1 257.8</b>	(180°-359°) <b>121.8 348.6</b>	<b>127.15</b>
DEP <b>132.1</b>	(120°-245°) <b>120.05</b>	(Rwy 18C-36C) <b>126.4 257.8</b>	(360°-179°) <b>121.9 348.6</b>	<b>348.6</b>
	(246°-360°) <b>134.75</b>	(Rwy 18R-36L) <b>133.35 257.8</b>		
	(180°-359°) <b>257.2</b>			
	(360°-179°) <b>307.8</b>			

## RADAR REQUIRED



SE-2, 07 FEB 2013 to 07 MAR 2013

SE-2, 07 FEB 2013 to 07 MAR 2013



**AUTHORIZATION REQUIRED**