

APP CRS	Rwy Idg	9000
003°	TDZE	744
	Apt Elev	748

RNAV (RNP) Z RWY 36L

CHARLOTTE/DOUGLAS INTL (CLT)

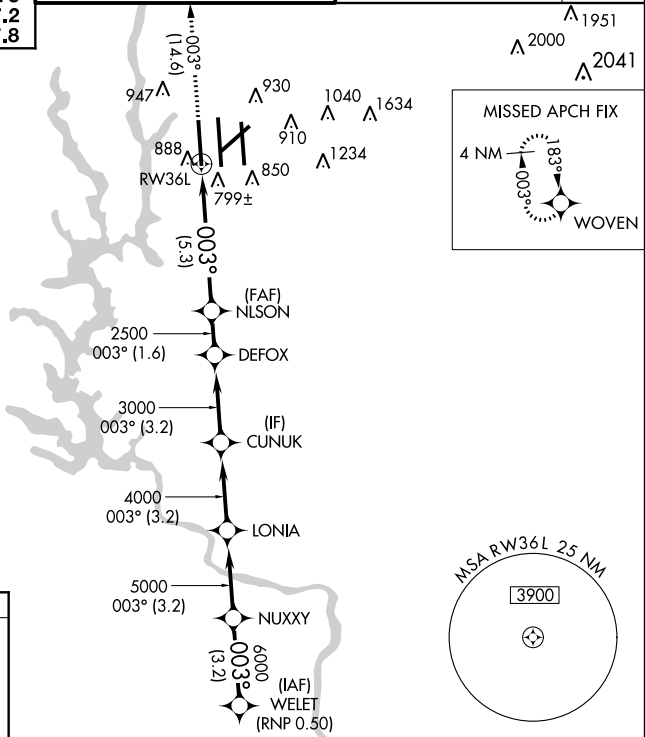
▼ GPS Required. For uncompensated Baro-VNAV systems, procedure NA below -10°C (14°F) or above 47°C (117°F). Visibility reduction by helicopters NA. For inoperative ALSF, increase RNP 0.11 visibility all Cats to RVR 5000 and RNP 0.30 visibility all Cats to RVR 6000. Simultaneous approach authorized with ILS or LOC Rwy 36R, ILS Rwy 36R (Cat II), ILS Rwy 36R (Cat III). Use of FD or AP providing RNAV track guidance required during simultaneous operations.

ALSF-2

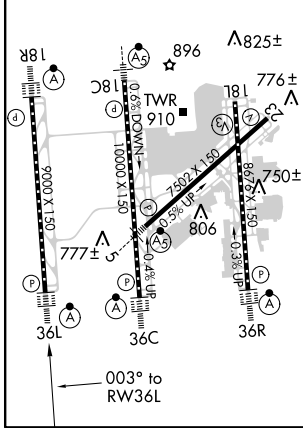
MISSED APPROACH: Climb to 3000 via track 003° to WOVEN and hold.

ATIS	CHARLOTTE APP CON	CHARLOTTE TOWER	GND CON	CLNC DEL
ARR 121.15	(001°-119°) 128.32	(Rwys 18L-36R, 5-23) 118.1 257.8	(180°-359°) 121.8 348.6	127.15
DEP 132.1	(120°-245°) 120.05	(Rwy 18C-36C) 126.4 257.8	(360°-179°) 121.9 348.6	348.6
	(246°-360°) 134.75	(Rwy 18R-36L) 133.35 257.8		
	(180°-359°) 257.2			
	(360°-179°) 307.8			

RADAR REQUIRED



ELEV 748	D	TDZE 744
HIRL all Rwys		
REIL Rwys 18L and 23		
TDZ/CL Rwys 18R, 36L, 36C and 36R		



3000	↑	tr 003°	WOVEN	VGSI and RNAV glidepath not coincident (VGSI Angle 3.00/TCH 55).	WELET
			NLSON	DEFOX	CUNUK
			2500	3000	4000
			5.3 NM	1.6 NM	3.2 NM
					3.2 NM
					3.2 NM
					3.2 NM
					7000
					GP 3.00°
					TCH 46
CATEGORY	A	B	C	D	
RNP 0.11 DA		1046/40	302 (300-¾)		
RNP 0.30 DA		1105/40	361 (400-¾)		

AUTHORIZATION REQUIRED

SE-2, 07 FEB 2013 to 07 MAR 2013

SE-2, 07 FEB 2013 to 07 MAR 2013