

APP CRS	Rwy Idg	<b>10000</b>
<b>003°</b>	TDZE	<b>707</b>
	Apt Elev	<b>748</b>

# RNAV (RNP) Z RWY 36C

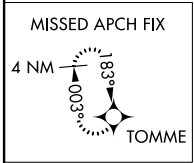
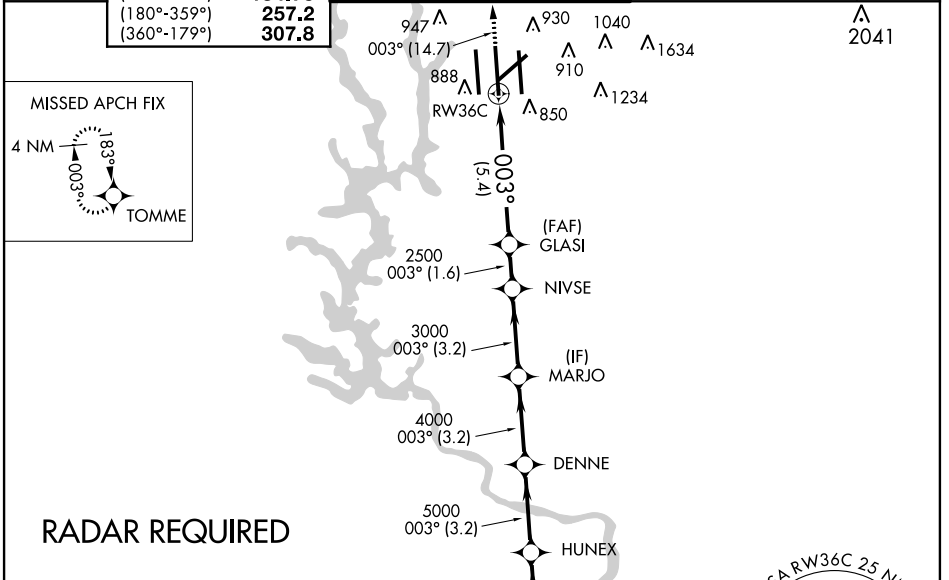
CHARLOTTE/DOUGLAS INTL (CLT)

**▼ GPS Required.** For uncompensated Baro-VNAV systems, procedure NA below -10°C (14°F) or above 47°C (117°F). For inoperative ALSF, increase RNP 0.11 visibility all Cats to RVR 6000 and RNP 0.30 visibility all Cats to 1/2 mile. Simultaneous approach authorized with ILS or LOC Rwy 36L, ILS Rwy 36L (Cat III), ILS Rwy 36L (Cat III), ILS or LOC Rwy 36R, ILS Rwy 36R (Cat II), ILS Rwy 36R (Cat III). Use of FD or AP providing RNAV track guidance required during simultaneous operations.

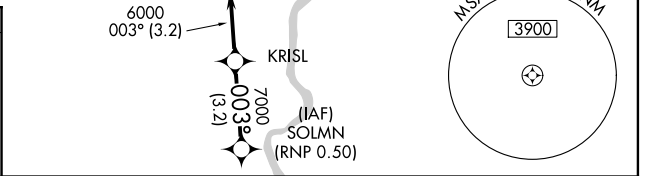
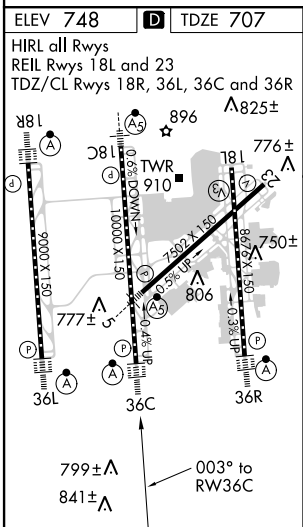
ALSF-2

**MISSED APPROACH:** Climb to 3000 on track 003° to TOMME and hold.

ATIS		CHARLOTTE APP CON		CHARLOTTE TOWER		GND CON		CLNC DEL
ARR	<b>121.15</b>	(001°-119°)	<b>128.32</b>	(Rwys 18L-36R, 5-23)	<b>118.1 257.8</b>	(180°-359°)	<b>121.8 348.6</b>	<b>127.15</b>
DEP	<b>132.1</b>	(120°-245°)	<b>120.05</b>	(Rwy 18C-36C)	<b>126.4 257.8</b>	(360°-179°)	<b>121.9 348.6</b>	<b>348.6</b>
		(246°-360°)	<b>134.75</b>	(Rwy 18R-36L)	<b>133.35 257.8</b>			
		(180°-359°)	<b>257.2</b>					
		(360°-179°)	<b>307.8</b>					



## RADAR REQUIRED



3000	↑	tr	003°	TOMME	VGSI and RNAV glidepath not coincident (VGSI Angle 3.00/TCH 72).					SOLMNL	
					GLASI	NIVSE	MARJO	DENNE	HUNEX	KRISL	8000
					2500	3000	4000	5000	6000	7000	GP 3.00°
					5.4 NM	1.6 NM	3.2 NM	3.2 NM	3.2 NM	3.2 NM	TCH 57
CATEGORY		A	B			C		D			
RNP 0.11 DA			1040/40			333 (300-¾)					
RNP 0.30 DA			1143/50			436 (400-1)					

## AUTHORIZATION REQUIRED

SE-2, 07 FEB 2013 to 07 MAR 2013

SE-2, 07 FEB 2013 to 07 MAR 2013