

RNAV (RNP) Z RWY 18R

CHARLOTTE/DOUGLAS INTL (CLT)

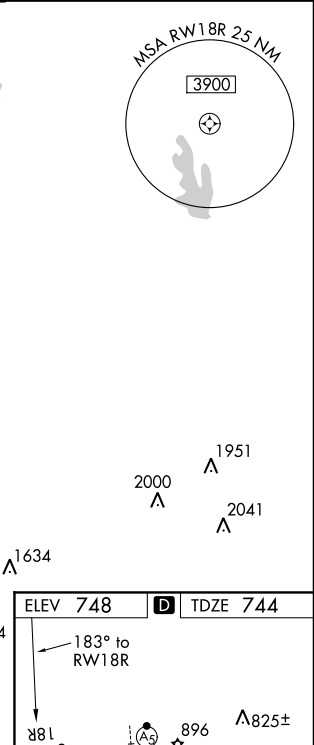
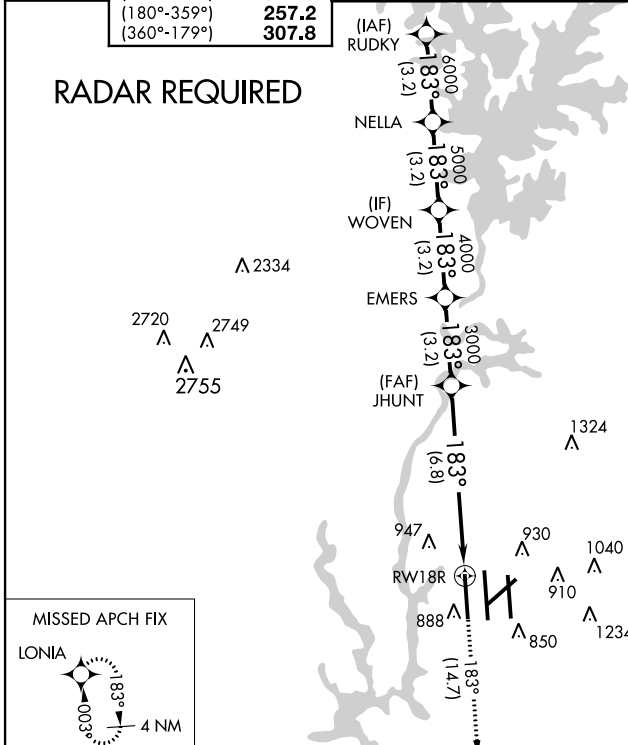
APP CRS	Rwy Idg	9000
183°	TDZE	744
	Apt Elev	748

GPS Required. For uncompensated Baro-VNAV systems, procedure NA below -10°C (14°F) or above 47°C (118°F). Visibility reduction by helicopters NA. For inoperative ALSF, increase RNP 0.11 visibility all Cats to RVR 5000 and RNP 0.30 visibility all Cats to RVR 6000. Simultaneous approach authorized with ILS or LOC Rwy 18L. Use of FD or AP providing RNAV track guidance required during simultaneous operations.

ALSF-2

MISSED APPROACH:
Climb to 3000 via track 183° to LONIA and hold.

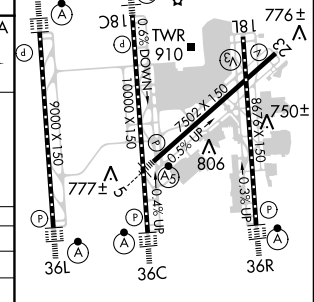
ATIS	CHARLOTTE APP CON	CHARLOTTE TOWER	GND CON	CLNC DEL
ARR 121.15	(001°-119°) 128.32	(Rwys 18L-36R, 5-23) 118.1 257.8	(180°-359°) 121.8 348.6	127.15
DEP 132.1	(120°-245°) 120.05	(Rwy 18C-36C) 126.4 257.8	(360°-179°) 121.9 348.6	348.6
	(246°-360°) 134.75	(Rwy 18R-36L) 133.35 257.8		
	(180°-359°) 257.2			
	(360°-179°) 307.8			



MISSED APCH FIX

LONIA
4 NM
183°
003°

	RUDKY	NELLA	WOVEN	EMERS	JHUNT	RWY 18R
	7000	6000	5000	4000	3000	
GP 3.00°						
TCH 46						
CATEGORY	A	B	C	D		
RNP 0.11 DA		1026/24	282 (300-½)			
RNP 0.30 DA		1085/40	341 (400-¾)			



AUTHORIZATION REQUIRED

HIRL all Rwys
 REIL Rwys 18L and 23
 TDZ/CL Rws 18R, 36L, 36C and 36R

SE-2, 07 FEB 2013 to 07 MAR 2013

SE-2, 07 FEB 2013 to 07 MAR 2013