

APP CRS	Rwy Idg	<b>10000</b>
<b>183°</b>	TDZE	<b>742</b>
	Apt Elev	<b>748</b>

# RNAV (RNP) Z RWY 18C

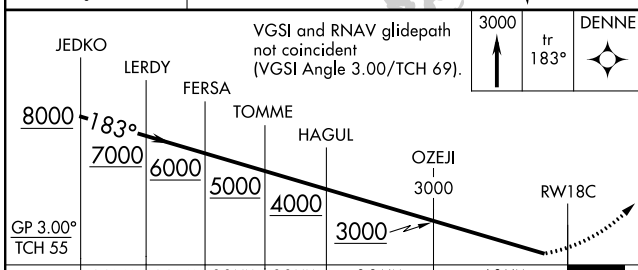
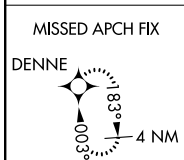
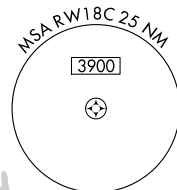
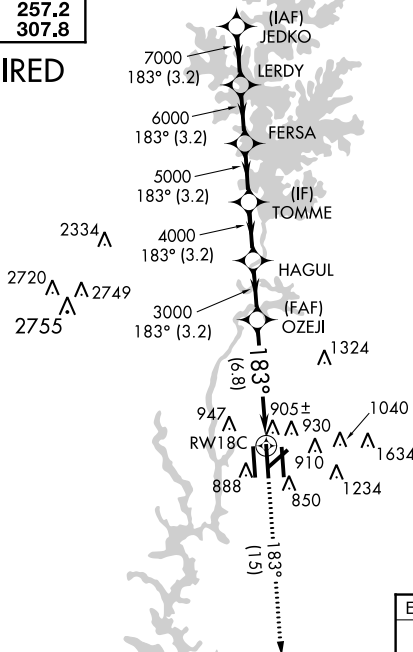
CHARLOTTE/DOUGLAS INTL (CLT)

GPS Required. For inop MALS, increase RNP 0.11 visibility all Cats to RVR 5000 and RNP 0.30 visibility all Cats to 1/2 mile. For uncompensated Baro-VNAV systems, procedure NA below -10°C (14°F) or above 47°C (117°F). Simultaneous approach authorized with ILS or LOC Rwy 18L, ILS or LOC Rwy 18R, ILS Rwy 18R (Cat II), ILS Rwy 18R (Cat III). Use of FD or AP providing RNAV track guidance required during simultaneous operations.

MALS R	MISSED APPROACH: Climb to 3000 on track 183° to DENNE and hold.
--------	--

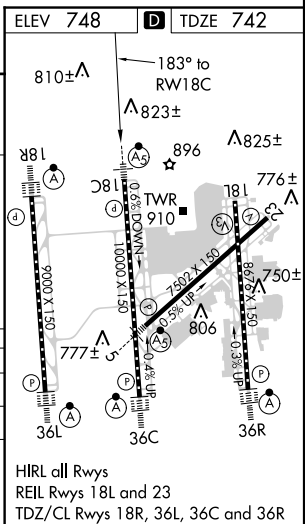
ATIS	CHARLOTTE APP CON	CHARLOTTE TOWER	GND CON	CLNC DEL
ARR <b>121.15</b>	(001°-119°) <b>128.32</b>	(Rwys 18L-36R, 5-23) <b>118.1 257.8</b>	(180°-359°) <b>121.8 348.6</b>	<b>127.15</b>
DEP <b>132.1</b>	(120°-245°) <b>120.05</b>	(Rwy 18C-36C) <b>126.4 257.8</b>	(360°-179°) <b>121.9 348.6</b>	<b>348.6</b>
	(246°-360°) <b>134.75</b>	(Rwy 18R-36L) <b>133.35 257.8</b>		
	(180°-359°) <b>257.2</b>			
	(360°-179°) <b>307.8</b>			

## RADAR REQUIRED



CATEGORY	A	B	C	D
RNP 0.11 DA		1054/40	312 (400-3/4)	
RNP 0.30 DA		1175/50	433 (500-1)	

## AUTHORIZATION REQUIRED



HIRL all Rwys  
REIL Rwys 18L and 23  
TDZ/CL Rwys 18R, 36L, 36C and 36R

SE-2, 07 FEB 2013 to 07 MAR 2013

SE-2, 07 FEB 2013 to 07 MAR 2013