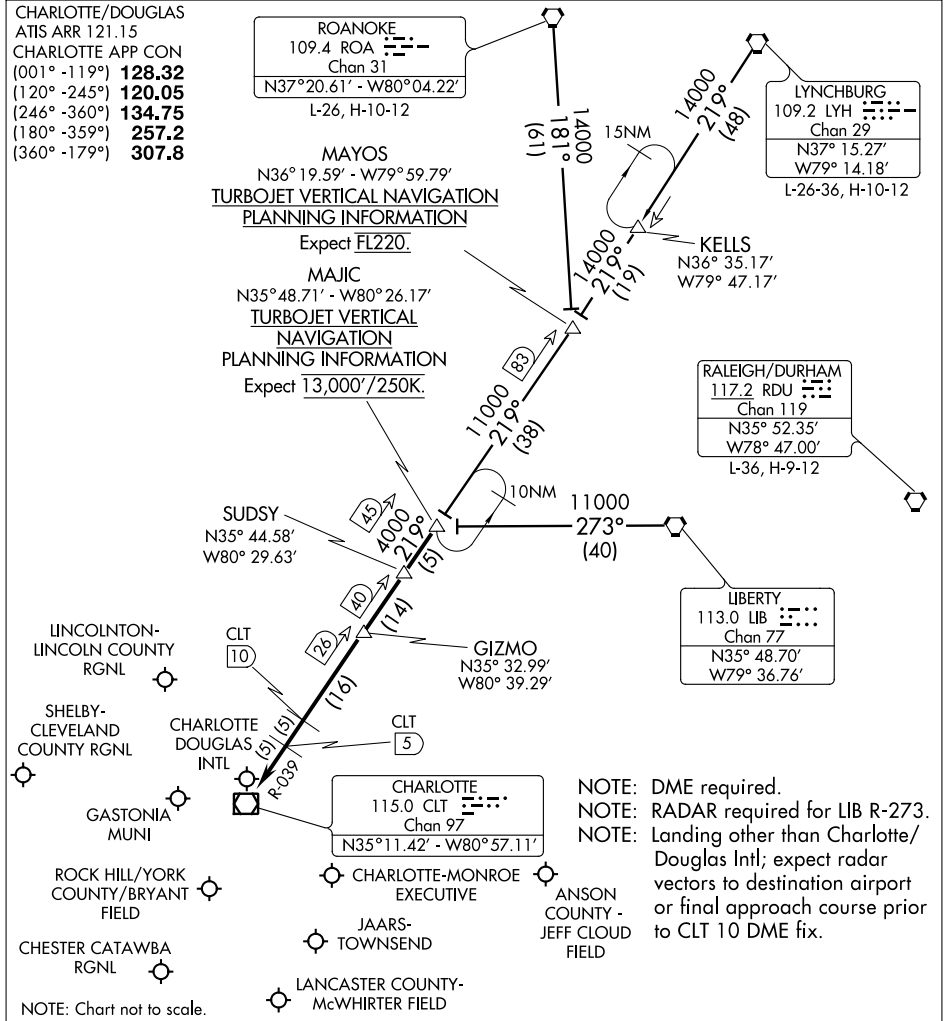


MAJIC ONE ARRIVAL

CHARLOTTE, NORTH CAROLINA



SE-2, 07 FEB 2013 to 07 MAR 2013

SE-2, 07 FEB 2013 to 07 MAR 2013

LIBERTY TRANSITION (LIB.MAJIC1): From over LIB VORTAC via LIB R-273 to MAJIC INT. Thence. . .

LYNCHBURG TRANSITION (LYH.MAJIC1): From over LYH VORTAC via LYH R-219 and CLT R-039 to MAJIC INT. Thence. . .

ROANOKE TRANSITION (ROA.MAJIC1): From over ROA VORTAC via ROA R-181 and CLT R-039 to MAJIC INT. Thence. . .

. . . .From over MAJIC via CLT R-039 to:

LANDING NORTH: CLT VOR/DME. Expect radar vectors to final approach course prior to the CLT 5 DME fix.

LANDING SOUTH: GIZMO. Expect radar vectors to final approach course.

MAJIC ONE ARRIVAL

CHARLOTTE, NORTH CAROLINA