

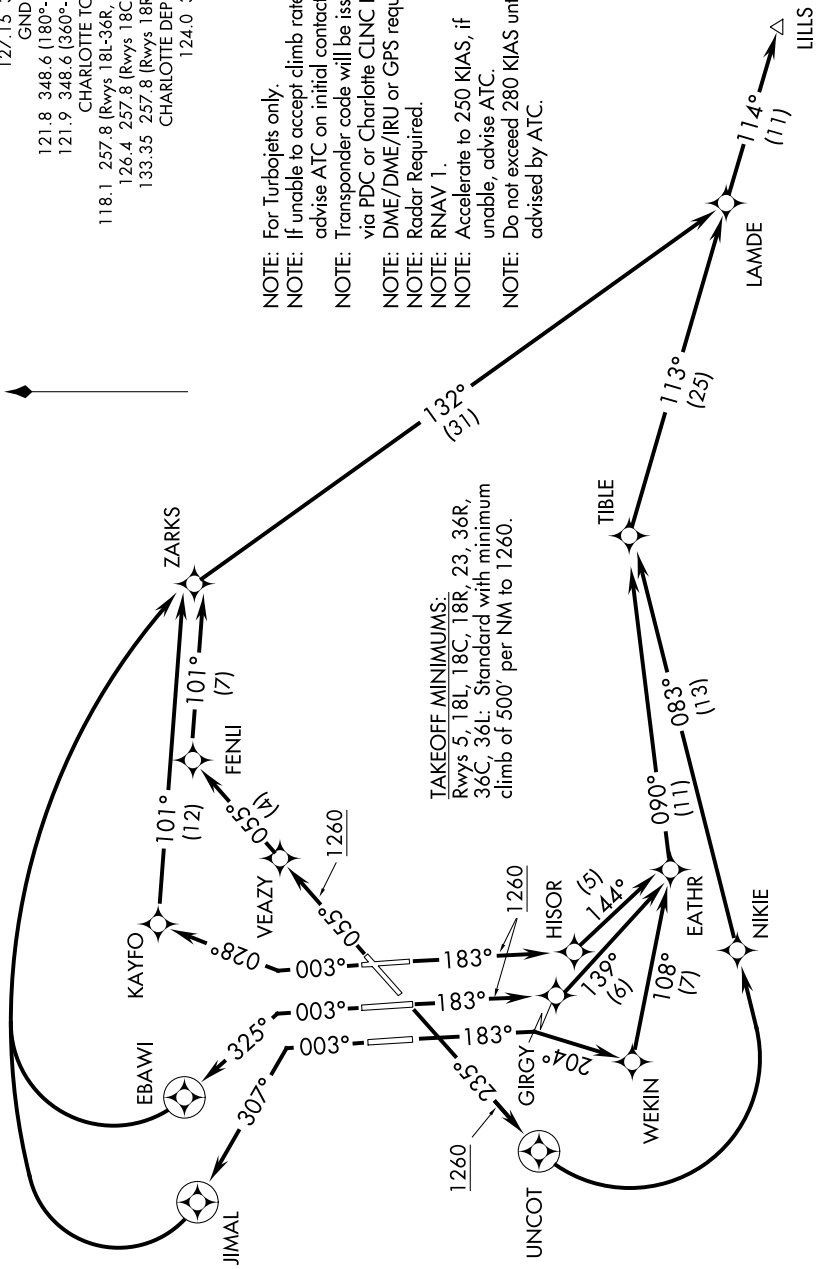
LILLS SIX DEPARTURE (RNAV)

SL-78 (FAA)

CHARLOTTE/DOUGLAS INTL (CLT)
CHARLOTTE, NORTH CAROLINA

ATIS DEP 132.1
 CLNC DEL 127.15 348.6
 GND CON 121.8 348.6 (180°-359°)
 121.9 348.6 (360°-179°)
 CHARLOTTE TOWER 118.1 257.8 (Rwys 18L-36R, 5-23)
 126.4 257.8 (Rwys 18C-36C)
 133.35 257.8 (Rwys 18R-36L)
 CHARLOTTE DEP CON 124.0 307.8

NOTE: For Turbojets only.
 NOTE: If unable to accept climb rates, advise ATC on initial contact.
 NOTE: Transponder code will be issued via PDC or Charlotte CLNC DEL.
 NOTE: DME/DME/IRU or GPS required.
 NOTE: Radar Required.
 NOTE: RNAV 1.
 NOTE: Accelerate to 250 KIAS, if unable, advise ATC.
 NOTE: Do not exceed 280 KIAS until advised by ATC.



TAKEOFF MINIMUMS:
 Rwys 5, 18L, 18C, 18R, 23, 36R, 36C, 36L: Standard with minimum climb of 500' per NM to 1260.

(NARRATIVE ON FOLLOWING PAGE)

NOTE: Chart not to scale.

SE-2, 07 FEB 2013 to 07 MAR 2013

SE-2, 07 FEB 2013 to 07 MAR 2013

LILLS SIX DEPARTURE (RNAV)

CHARLOTTE, NORTH CAROLINA
CHARLOTTE/DOUGLAS INTL (CLT)