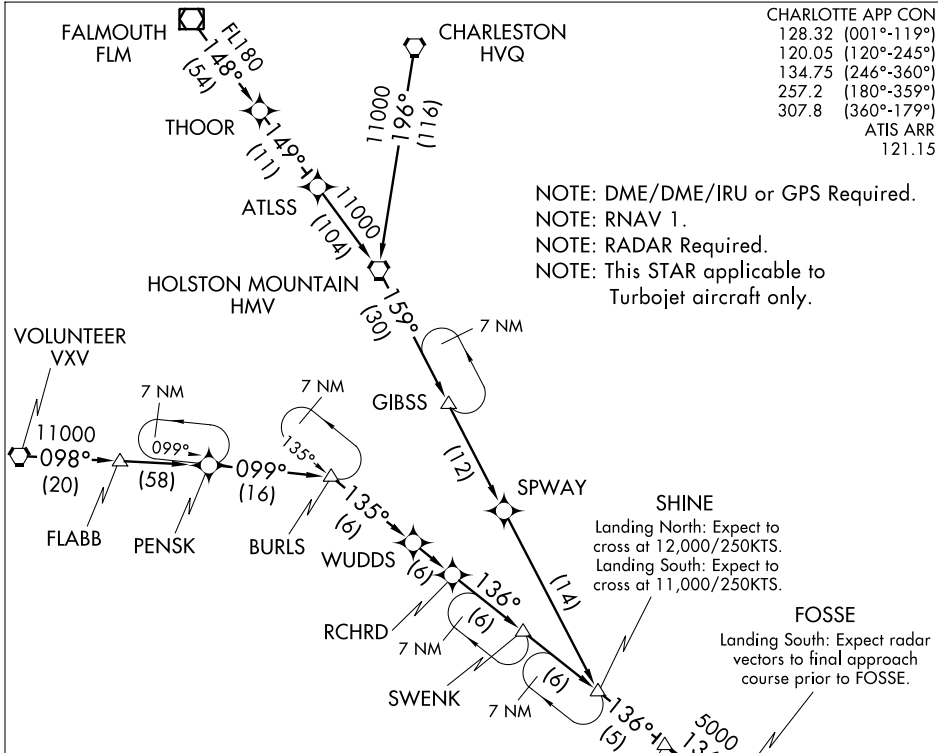


# JOHNS THREE ARRIVAL (RNAV)

CHARLOTTE APP CON	
128.32	(001°-119°)
120.05	(120°-245°)
134.75	(246°-360°)
257.2	(180°-359°)
307.8	(360°-179°)
ATIS ARR	
121.15	

NOTE: DME/DME/IRU or GPS Required.  
 NOTE: RNAV 1.  
 NOTE: RADAR Required.  
 NOTE: This STAR applicable to Turbojet aircraft only.



NOTE: Chart not to scale.

### ARRIVAL ROUTE DESCRIPTION

- CHARLESTON TRANSITION (HVQ.JOHN3):
- FALMOUTH TRANSITION (FLM.JOHN3):
- HOLSTON MOUNTAIN TRANSITION (HMV.JOHN3):
- VOLUNTEER TRANSITION (VXV.JOHN3):

From over JOHN3 on track 136° to FOSSE, thence as depicted to PACOK, depart PACOK on heading 183° for radar vectors to final approach course.

### LOST COMMUNICATIONS:

Landing North: At PACOK fly heading 090°, maintain 5000; intercept and execute ILS or LOC Rwy 36L approach. If unable, proceed direct to CLT VOR/DME and hold, maintain 5000.

Landing South: At FOSSE fly heading 090°, maintain 5000; intercept and execute ILS or LOC Rwy 18R approach. If unable, proceed direct to CLT VOR/DME and hold, maintain 5000.

Landing North: Expect radar vectors to final approach course prior to PACOK.

# JOHNS THREE ARRIVAL (RNAV)

SE-2, 07 FEB 2013 to 07 MAR 2013

SE-2, 07 FEB 2013 to 07 MAR 2013