

# JACAL SIX DEPARTURE (RNAV)

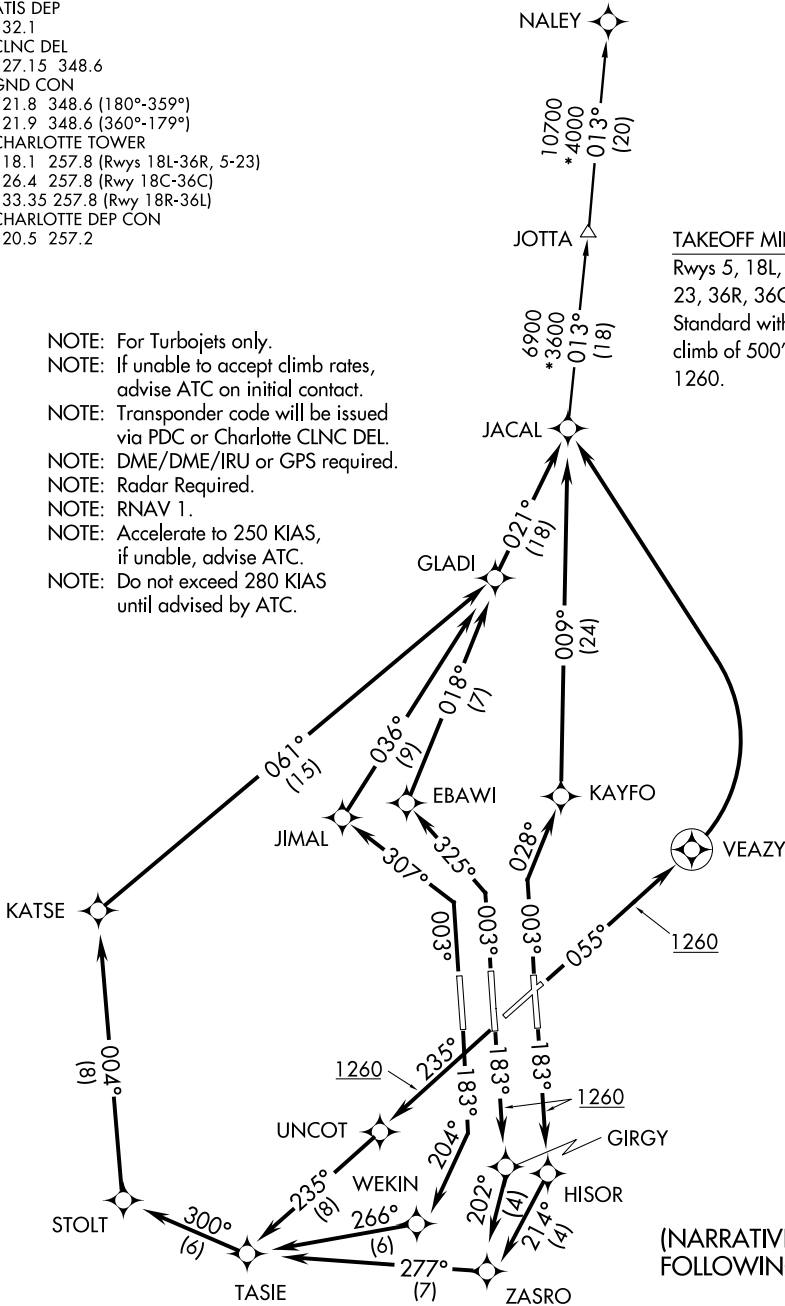
SL-78 (FAA)

CHARLOTTE/DOUGLAS INTL (CLT)  
CHARLOTTE, NORTH CAROLINA

ATIS DEP  
132.1  
CLNC DEL  
127.15 348.6  
GND CON  
121.8 348.6 (180°-359°)  
121.9 348.6 (360°-179°)  
CHARLOTTE TOWER  
118.1 257.8 (Rwys 18L-36R, 5-23)  
126.4 257.8 (Rwy 18C-36C)  
133.35 257.8 (Rwy 18R-36L)  
CHARLOTTE DEP CON  
120.5 257.2

- NOTE: For Turbojets only.
- NOTE: If unable to accept climb rates, advise ATC on initial contact.
- NOTE: Transponder code will be issued via PDC or Charlotte CLNC DEL.
- NOTE: DME/DME/IRU or GPS required.
- NOTE: Radar Required.
- NOTE: RNAV 1.
- NOTE: Accelerate to 250 KIAS, if unable, advise ATC.
- NOTE: Do not exceed 280 KIAS until advised by ATC.

**TAKEOFF MINIMUMS:**  
Rwys 5, 18L, 18C, 18R, 23, 36R, 36C, 36L:  
Standard with minimum climb of 500' per NM to 1260.



(NARRATIVE ON FOLLOWING PAGE)

NOTE: Chart not to scale.

SE-2, 07 FEB 2013 to 07 MAR 2013

SE-2, 07 FEB 2013 to 07 MAR 2013