

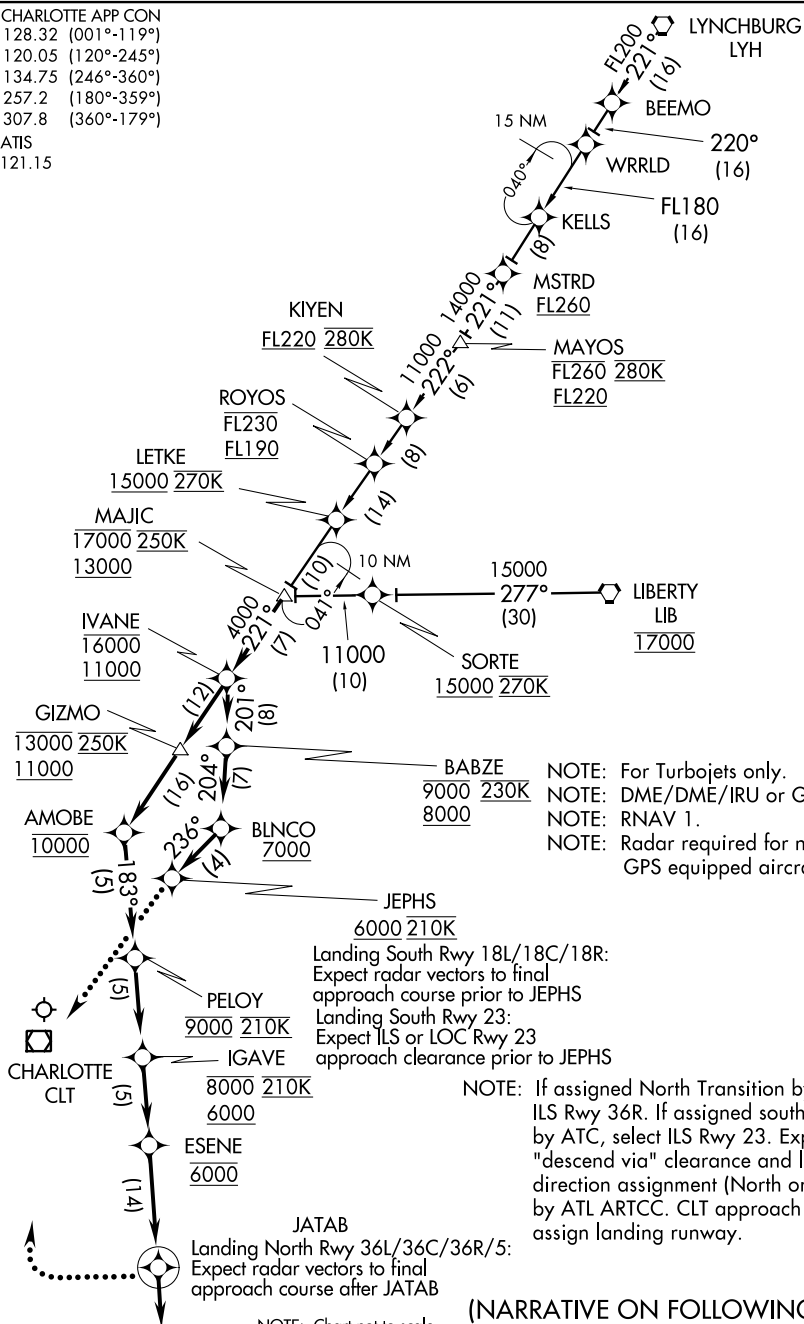
(IVANE.IVANE1) 13010

ST-78 (FAA)

CHARLOTTE/DOUGLAS INTL (CLT)
CHARLOTTE, NORTH CAROLINA

IVANE ONE ARRIVAL (RNAV)

CHARLOTTE APP CON
128.32 (001°-119°)
120.05 (120°-245°)
134.75 (246°-360°)
257.2 (180°-359°)
307.8 (360°-179°)
ATIS
121.15



NOTE: For Turbojets only.
 NOTE: DME/DME/IRU or GPS required.
 NOTE: RNAV 1.
 NOTE: Radar required for non-GPS equipped aircraft.

Landing South Rwy 18L/18C/18R:
 Expect radar vectors to final approach course prior to JEPHSH
 Landing South Rwy 23:
 Expect ILS or LOC Rwy 23 approach clearance prior to JEPHSH

NOTE: If assigned North Transition by ATC, select ILS Rwy 36R. If assigned south transition by ATC, select ILS Rwy 23. Expect "descend via" clearance and landing direction assignment (North or South) by ATL ARTCC. CLT approach will assign landing runway.

NOTE: Chart not to scale.

(NARRATIVE ON FOLLOWING PAGE)

SE-2, 07 FEB 2013 to 07 MAR 2013

SE-2, 07 FEB 2013 to 07 MAR 2013

IVANE ONE ARRIVAL (RNAV)

(IVANE.IVANE1) 13010

CHARLOTTE, NORTH CAROLINA
CHARLOTTE/DOUGLAS INTL (CLT)