

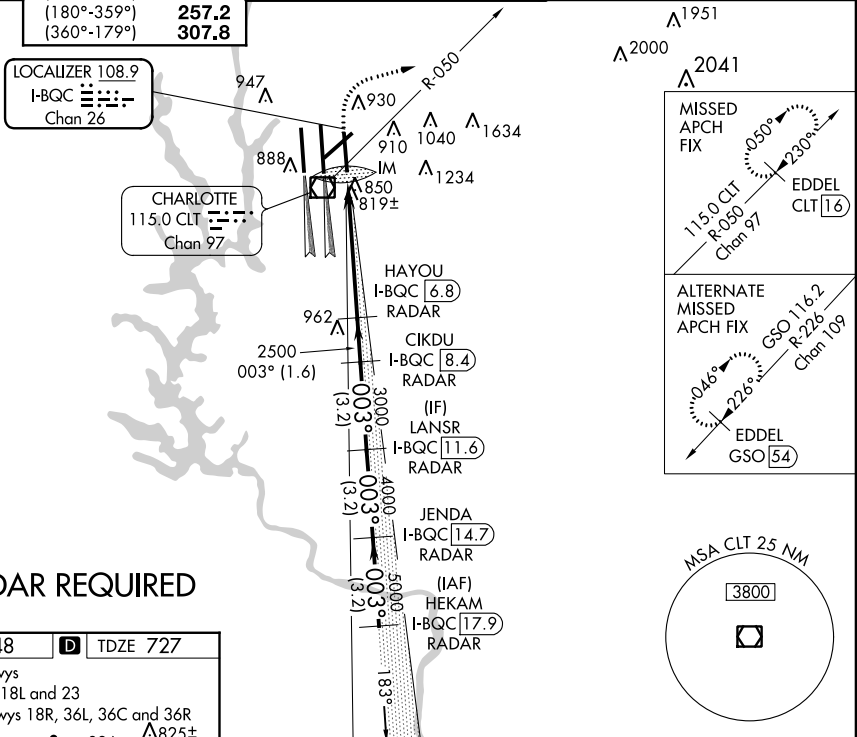
LOC/DME I-BQC <b>108.9</b> Chan 26	APP CRS <b>003°</b>	Rwy Idg TDZE Apt Elev	<b>8676</b> <b>727</b> <b>748</b>
--	------------------------	-----------------------------	---

# ILS or LOC RWY 36R

CHARLOTTE/DOUGLAS INTL (CLT)

<p>⚠ Circling NA at night. Simultaneous approach authorized with Rwy 36C/L. DME or RADAR Required.</p>	<p>ALS-F-2 ⓐ</p>	<p>MISSED APPROACH: Climb to 1200 then climbing right turn to 4000 via heading 080° and CLT R-050 to EDELL/CLT 1.6 DME and hold.</p>
--	----------------------	--

<p>ATIS ARR <b>121.15</b> DEP <b>132.1</b></p>	<p>CHARLOTTE APP CON (001°-119°) <b>128.32</b> (120°-245°) <b>120.05</b> (246°-360°) <b>134.75</b> (180°-359°) <b>257.2</b> (360°-179°) <b>307.8</b></p>	<p>CHARLOTTE TOWER (Rwys 18L-36R, 5-23) <b>118.1 257.8</b> (Rwy 18C-36C) <b>126.4 257.8</b> (Rwy 18R-36L) <b>133.35 257.8</b></p>	<p>GND CON (180°-359°) <b>121.8 348.6</b> (360°-179°) <b>121.9 348.6</b></p>	<p>CLNC DEL <b>127.15</b> <b>348.6</b></p>
--	--	---	--	--



SE-2, 07 FEB 2013 to 07 MAR 2013

SE-2, 07 FEB 2013 to 07 MAR 2013

## RADAR REQUIRED

ELEV 748	<b>D</b>	TDZE 727
HIRL all Rwys		
REIL Rwys 18L and 23		
TDZ/CL Rwys 18R, 36L, 36C and 36R		

FAF to MAP 5.3 NM					
Knots	60	90	120	150	180
Min:Sec	5:18	3:32	2:39	2:07	1:46

1200	4000	CLT R-050	EDELL CLT 1.6	HEKAM I-BQC [17.9] RADAR	6000
<p>VGSI and ILS glidepath not coincident (VGSI Angle 3.00/TCH 71).</p>					
<p>JENDA I-BQC [14.7] RADAR</p>					
<p>LANSR I-BQC [11.6] RADAR</p>					
<p>CIKDU I-BQC [8.4] RADAR</p>					
<p>HAYOU I-BQC [6.8] RADAR</p>					
<p>IM I-BQC [1.5] RADAR</p>					
<p>I-BQC [2.4] RADAR</p>					
<p>I-BQC [1.5] RADAR</p>					
<p>GS 3.00° TCH 58</p>					
<p>0.2 0.7 4.4 NM 1.6 NM 3.2 NM 3.2 NM 3.2 NM</p>					
CATEGORY	A		B		D
S-ILS 36R	927/18		200 (200-½)		
S-LOC 36R	1080/24		353 (400-½)		1080/40 353 (400-¾)
CIRCLING	1240-1		492 (500-1)		1260-1½ 512 (600-1½)
					1300-2 552 (600-2)