

LOC I-DQG 111.7	APP CRS 003°	Rwy Idg TDZE Apt Elev	10000 707 748
---------------------------	------------------------	-----------------------------	--

ILS or LOC RWY 36C

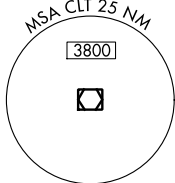
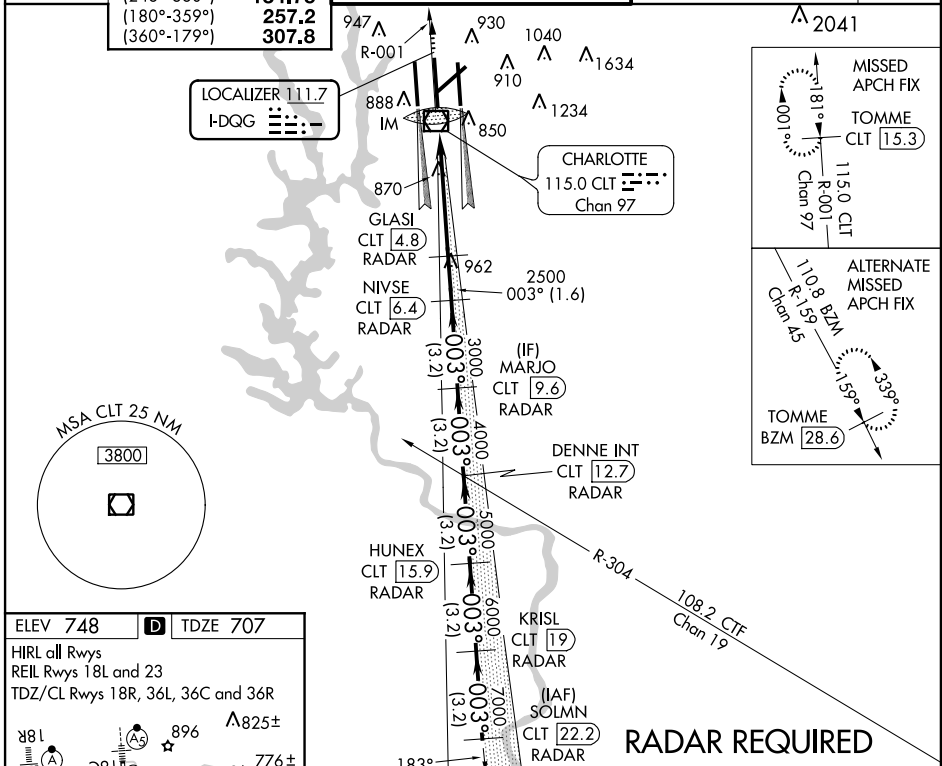
CHARLOTTE/DOUGLAS INTL (CLT)

▼ Circling NA at night. Simultaneous approach authorized with ILS or LOC Rwy 36L, ILS Rwy 36L (Cat II), ILS Rwy 36L (Cat III), ILS or LOC Rwy 36R, ILS Rwy 36R (Cat II), ILS Rwy 36R (Cat III). DME or RADAR Required. DQG ILS LLZ Rwy 36C unusable for rollout guidance.

ALS-F-2
A

MISSED APPROACH: Climb to 3000 via CLT R-001 to TOMME/CLT 15.3 DME and hold.

ATIS ARR 121.15 DEP 132.1	CHARLOTTE APP CON (001°-119°) 128.32 (120°-245°) 120.05 (246°-360°) 134.75 (180°-359°) 257.2 (360°-179°) 307.8	CHARLOTTE TOWER (Rwys 18L-36R, 5-23) 118.1 257.8 (Rwy 18C-36C) 126.4 257.8 (Rwy 18R-36L) 133.35 257.8	GND CON (180°-359°) 121.8 348.6 (360°-179°) 121.9 348.6	CLNC DEL 127.15 348.6
---	--	---	---	---



ELEV 748	D	TDZE 707			
HIRL all Rwys					
REIL Rwys 18L and 23					
TDZ/CL Rwys 18R, 36L, 36C and 36R					
Knots	60	90	120	150	180
Min:Sec	5:24	3:36	2:42	2:10	1:48

CLT R-001	TOMME CLT 15.3	VGSi and ILS glidepath not coincident (VGSi Angle 3.00/TCH 72).		SOLMN CLT 22.2			
GLASI CLT 4.8	NIVSE CLT 6.4	MARJO CLT 9.6	DENNE INT CLT 12.7	HUNEX CLT 19			
IM 2500	3000	4000	5000	6000			
0.2	5.2 NM	1.6 NM	3.2 NM	3.2 NM	3.2 NM	3.2 NM	3.2 NM
CATEGORY	A		B		C		D
S-ILS 36C	907/18		200 (200-1/2)				
S-LOC 36C	1120/24		413 (400-1/2)				
CIRCLING	1240-1 492 (500-1)		1260-1 1/2 512 (600-1 1/2)		1300-2 552 (600-2)		

SE-2, 07 FEB 2013 to 07 MAR 2013

SE-2, 07 FEB 2013 to 07 MAR 2013