

LOC/DME I-APU 109.5 Chan 32	APP CRS 235°	Rwy Idg TDZE Apt Elev	7502 747 748
-------------------------------------------------	------------------------	-----------------------------	-----------------------------------------

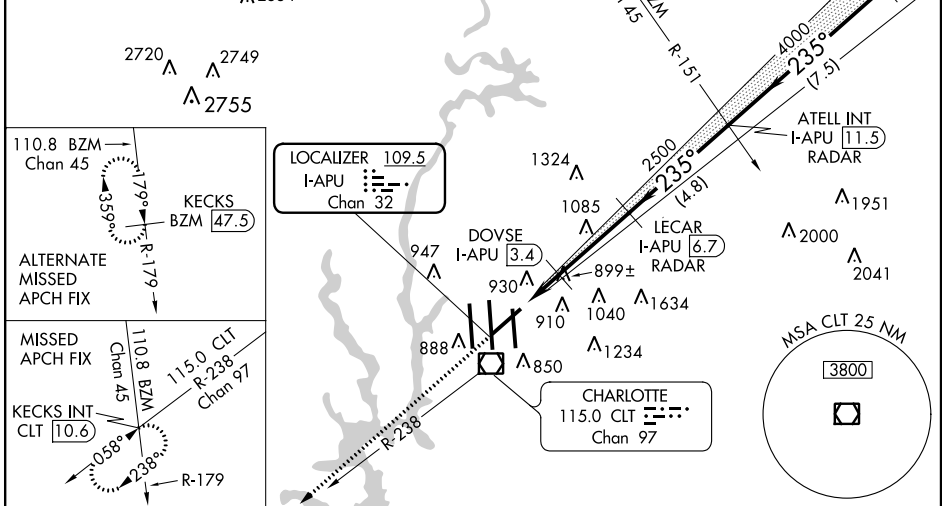
ILS or LOC RWY 23

CHARLOTTE/DOUGLAS INTL (CLT)

ATIS ARR 121.15 DEP 132.1	CHARLOTTE APP CON (001°-119°) 128.32 (120°-245°) 120.05 (246°-360°) 134.75 (180°-359°) 257.2 (360°-179°) 307.8	CHARLOTTE TOWER (Rwys 18L-36R, 5-23) 118.1 257.8 (Rwy 18C-36C) 126.4 257.8 (Rwy 18R-36L) 133.35 257.8	GND CON (180°-359°) 121.8 348.6 (360°-179°) 121.9 348.6	CLNC DEL 127.15 348.6
	MISSED APPROACH: Climb to 4000 via heading 235° and CLT R-238 to KECKS INT/CLT 10.6 DME and hold, continue climb-in-hold to 4000.			
	Circling NA at night. DME or RADAR Required.			

RADAR REQUIRED

A 2334



SE-2, 07 FEB 2013 to 07 MAR 2013

SE-2, 07 FEB 2013 to 07 MAR 2013

ELEV 748	TDZE 747	4000	CLT R-238	KECKS INT	VGSI and ILS glidepath not coincident (VGSI Angle 3.00/TCH 54).	JEPHS I-APU (18.9) RADAR
235° 5.3 NM from FAF	825±	hdg 235°				
*LOC only.						
GS unusable below 1100. GS 3.00° TCH 58						
CATEGORY	A	B	C	D		
S-ILS 23	1100-1¼		353 (400-1¼)			
S-LOC 23	1400/50	653 (700-1)	1400-1¾ 653 (700-1¾)	1400-2 653 (700-2)		
CIRCLING	1400-1	652 (700-1)	1400-1¾ 652 (700-1¾)	1400-2 652 (700-2)		
DOVSE FIX MINIMUMS						
S-LOC 23	1160/50	413 (500-1)	1160/60	413 (500-1¼)		
CIRCLING	1240-1	492 (500-1)	1260-1½ 512 (600-1½)	1300-2 552 (600-2)		

HIRL all Rwys
REIL Rwys 18L and 23
TDZ/CL Rwys 18R, 36L, 36C and 36R

FAF to MAP 5.3 NM

Knots	60	90	120	150	180
Min:Sec	5:18	3:32	2:39	2:07	1:46