

LOC/DME I-RGS 110.15 Chan 38 (Y)	APP CRS 183°	Rwy Idg TDZE Apt Elev	9000 744 748
---	------------------------	-----------------------------	---

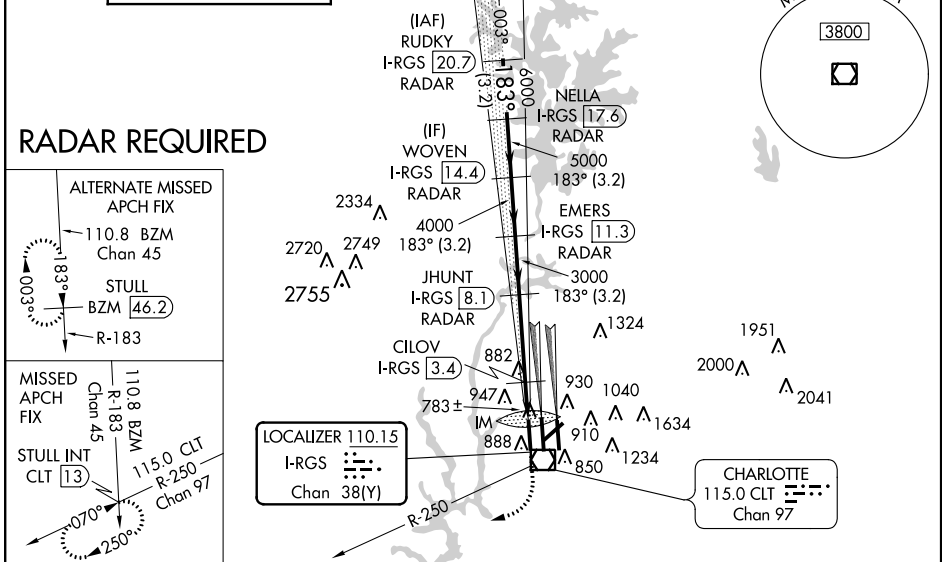
ILS or LOC RWY 18R

CHARLOTTE/DOUGLAS INTL (CLT)

⚠ Circling NA at night. Simultaneous approach authorized with Rwy 18C/L. DME or RADAR Required. CILOV Fix Minimums: for inoperative ALSF, increase S-LOC 18R Cat D visibility to RVR 5000.

ALSF-2
MISSED APPROACH: Climb to 1200 then climbing right turn to 4000 via heading 230° and CLT R-250 to STULL INT/CLT 13 DME and hold.

ATIS ARR 121.15 DEP 132.1	CHARLOTTE APP CON (001°-119°) 128.32 (120°-245°) 120.05 (246°-360°) 134.75 (180°-359°) 257.2 (360°-179°) 307.8	CHARLOTTE TOWER (Rwys 18L-36R, 5-23) 118.1 257.8 (Rwy 18C-36C) 126.4 257.8 (Rwy 18R-36L) 133.35 257.8	GND CON (180°-359°) 121.8 348.6 (360°-179°) 121.9 348.6	CLNC DEL 127.15 348.6
---	--	---	---	---



SE-2, 07 FEB 2013 to 07 MAR 2013

SE-2, 07 FEB 2013 to 07 MAR 2013

RUDKY I-RGS 20.7 RADAR	NELLA I-RGS 17.6 RADAR	WOVEN I-RGS 14.4 RADAR	EMERS I-RGS 11.3 RADAR	JHUNT I-RGS 8.1 RADAR	CILOV I-RGS 3.4	I-RGS IM 2.1	I-RGS 1.3	STULL INT
# LOC only								
7000	6000	5000	4000	3000	3000	3000	3000	3000
3.2 NM		3.2 NM		3.2 NM		4.7 NM		1.3 NM
A		B		C		D		
S-ILS 18R	944/18 200 (200-½)							
S-LOC 18R	1240/24	496 (500-½)	1240/40	496 (500-¾)	1240/50	496 (500-1)		
CIRCLING	1240-1	492 (500-1)	1260-1½	512 (600-1½)	1300-2	552 (600-2)		
CILOV FIX MINIMUMS								
S-LOC 18R	1040/24	296 (300-½)	1040/40	296 (300-¾)				
CIRCLING	1240-1	492 (500-1)	1260-1½	512 (600-1½)	1300-2	552 (600-2)		

