

LOC I-PEP 111.3	APP CRS 183°	Rwy Idg 10000
		TDZE 742
		Apt Elev 748

ILS or LOC RWY 18C

CHARLOTTE/DOUGLAS INTL (CLT)

▼ Circling NA at night. Simultaneous approach authorized with ILS or LOC Rwy 18L, ILS or LOC Rwy 18R, ILS Rwy 18R (Cat II), ILS Rwy 18R (Cat III). DME or RADAR Required. **RVR 1800 authorized with the use of FD or AP or HUD to DA.

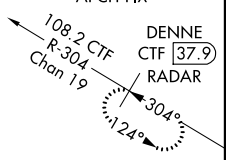


MISSED APPROACH: Climb to 3000 on CLT VOR/DME R-181 to DENNE/CLT 12.7 DME/RADAR and hold.

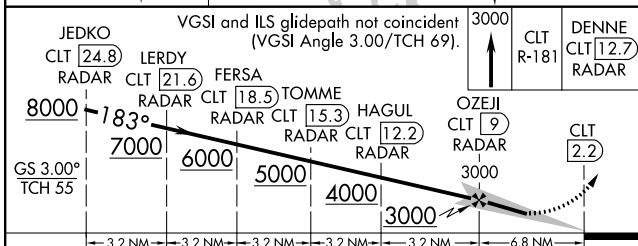
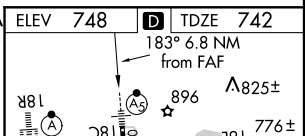
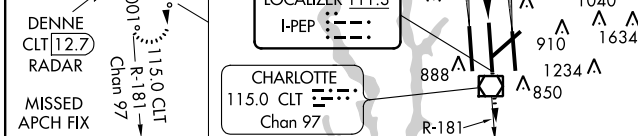
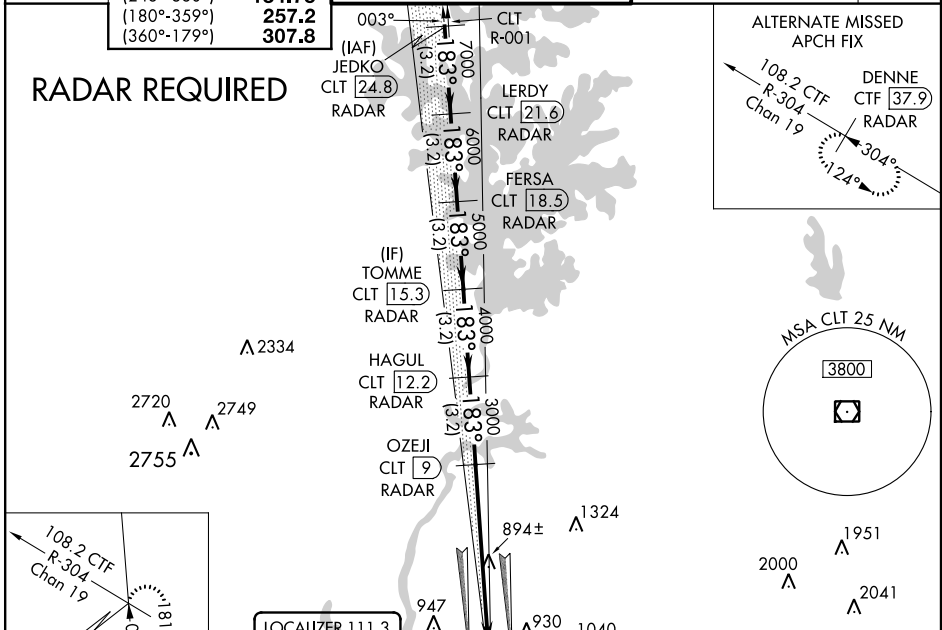
ATIS	CHARLOTTE APP CON	CHARLOTTE TOWER	GND CON	CLNC DEL
ARR 121.15	(001°-119°) 128.32	(Rwys 18L-36R, 5-23) 118.1 257.8	(180°-359°) 121.8 348.6	127.15
DEP 132.1	(120°-245°) 120.05	(Rwy 18C-36C) 126.4 257.8	(360°-179°) 121.9 348.6	348.6
	(246°-360°) 134.75	(Rwy 18R-36L) 133.35 257.8		
	(180°-359°) 257.2			
	(360°-179°) 307.8			

RADAR REQUIRED

ALTERNATE MISSED APCH FIX



SE-2, 07 FEB 2013 to 07 MAR 2013



CATEGORY	A	B	C	D
S-ILS 18C		**942/24	200 (200-½)	
S-LOC 18C	1200/24	458 (500-½)	1200/40 458 (500-¾)	1200/50 458 (500-1)
CIRCLING	1240-1	492 (500-1)	1260-1½ 512 (600-1½)	1300-2 552 (600-2)

HIRL all Rwys
REIL Rwys 18L and 23
TDZ/CL Rws 18R, 36L, 36C and 36R

FAF to MAP 6.8 NM

Knots	60	90	120	150	180
Min:Sec	6:48	4:32	3:24	2:43	2:16

SE-2, 07 FEB 2013 to 07 MAR 2013