

LOC/DME I-BQC 108.9 Chan 26	APP CRS 003°	Rwy ldg TDZE Apt Elev	8676 727 748
--	------------------------	-----------------------------	---

ILS RWY 36R (CAT III)
CHARLOTTE/DOUGLAS INTL (CLT)

Simultaneous approach authorized with Rwy 36C/L. DME or RADAR Required.

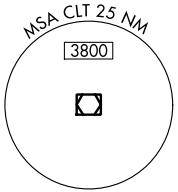
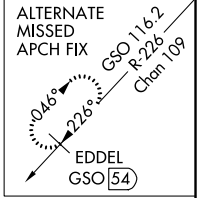
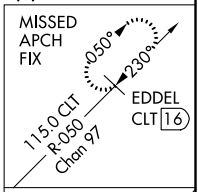
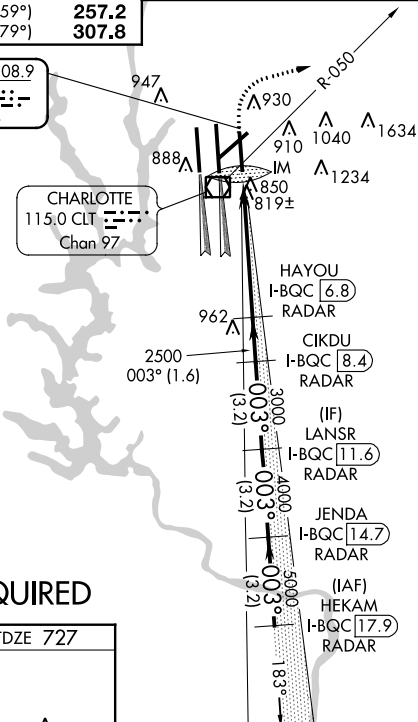
ALSF-2

MISSED APPROACH: Climb to 1200 then climbing right turn to 4000 via heading 080° and CLT R-050 to EDDEL/CLT 16 DME and hold.

ATIS ARR 121.15 DEP 132.1	CHARLOTTE APP CON (001°-119°) 128.32 (120°-245°) 120.05 (246°-360°) 134.75 (180°-359°) 257.2 (360°-179°) 307.8	CHARLOTTE TOWER (Rwys 18L-36R, 5-23) 118.1 257.8 (Rwy 18C-36C) 126.4 257.8 (Rwy 18R-36L) 133.35 257.8	GND CON (180°-359°) 121.8 348.6 (360°-179°) 121.9 348.6	CLNC DEL 127.15 348.6
---	--	---	---	---

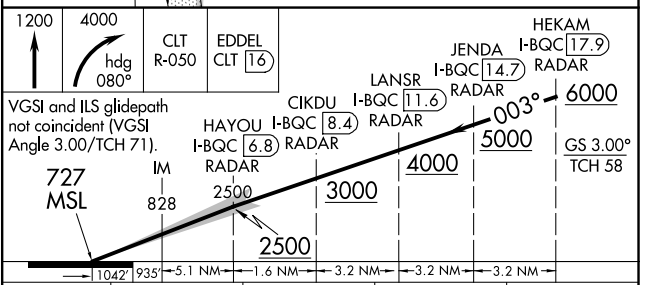
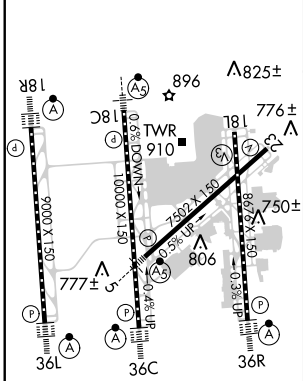
LOCALIZER 108.9
I-BQC
Chan 26

CHARLOTTE
115.0 CLT
Chan 97



RADAR REQUIRED

ELEV 748	D	TDZE 727
----------	----------	----------



CATEGORY	A	B	C	D
S-ILS 36R		CAT IIIa RVR 07		
S-ILS 36R		CAT IIIb RVR 06		
S-ILS 36R		CAT IIIc NA		

CATEGORY III ILS SPECIAL AIRCREW & AIRCRAFT CERTIFICATION REQUIRED

HJRL all Rwys
REIL Rwys 18L and 23
TDZ/CL Rwys 18R, 36L, 36C and 36R

SE-2, 07 FEB 2013 to 07 MAR 2013

SE-2, 07 FEB 2013 to 07 MAR 2013