

LOC/DME I-XUU 110.15 Chan 38 (Y)	APP CRS 003°	Rwy Idg TDZE Apt Elev	9000 744 748
---	------------------------	-----------------------------	---

ILS RWY 36L (CAT III)

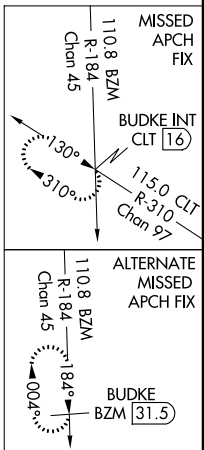
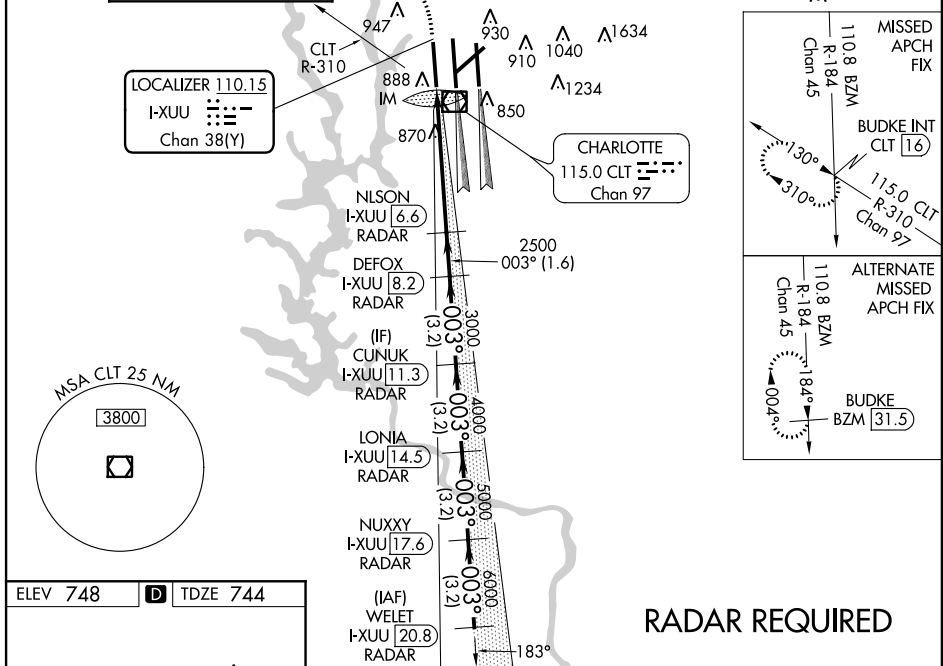
CHARLOTTE/DOUGLAS INTL (CLT)

⚠ Simultaneous approach authorized with Rwy 36C/R. DME or RADAR Required.

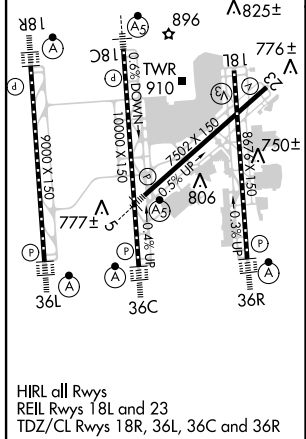


MISSED APPROACH: Climb to 1200 then climbing left turn to 4000 via heading 280° and CLT R-310 to BUDKE INT/CLT 16 DME and hold.

ATIS	CHARLOTTE APP CON	CHARLOTTE TOWER	GND CON	CLNC DEL
ARR 121.15	(001°-119°) 128.32	(Rwys 18L-36R, 5-23) 118.1 257.8	(180°-359°) 121.8 348.6	127.15
DEP 132.1	(120°-245°) 120.05	(Rwy 18C-36C) 126.4 257.8	(360°-179°) 121.9 348.6	348.6
	(246°-360°) 134.75	(Rwy 18R-36L) 133.35 257.8		
	(180°-359°) 257.2			
	(360°-179°) 307.8			



ELEV 748	D	TDZE 744
----------	----------	----------



1200	4000	CLT R-310	BUDKE INT	VGSI and ILS glidepath not coincident (VGSI Angle 3.00/TCH 55).	WELET I-XUU 20.8 RADAR		
744 MSL	832	2500	3000	4000	5000	6000	7000
1120°	790°	5.2 NM	1.6 NM	3.2 NM	3.2 NM	3.2 NM	3.2 NM
CATEGORY	A	B	C	D			
S-ILS 36L	CAT IIIa RVR 07						
S-ILS 36L	CAT IIIb RVR 06						
S-ILS 36L	CAT IIIc NA						

CATEGORY III ILS - SPECIAL AIRCREW & AIRCRAFT CERTIFICATION REQUIRED

SE-2, 07 FEB 2013 to 07 MAR 2013

SE-2, 07 FEB 2013 to 07 MAR 2013