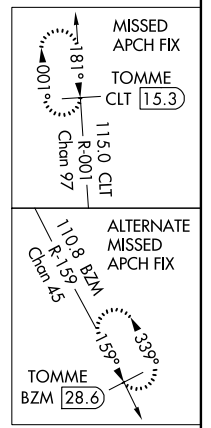
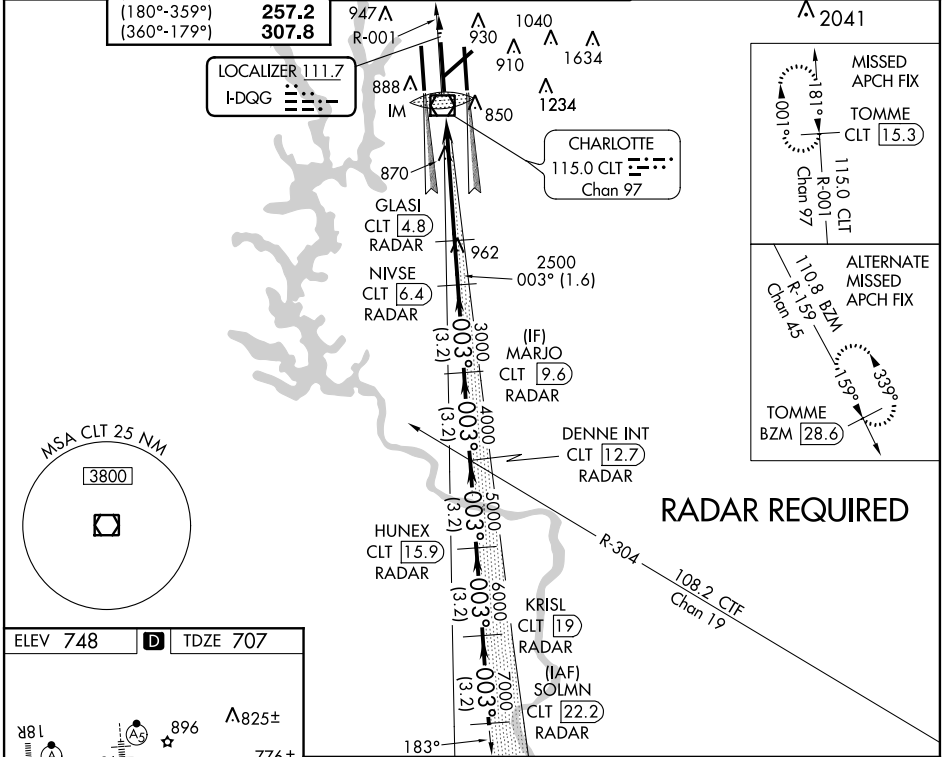


LOC I-DQG <b>111.7</b>	APP CRS <b>003°</b>	Rwy Idg <b>10000</b>
		TDZE <b>707</b>
		Apt Elev <b>748</b>

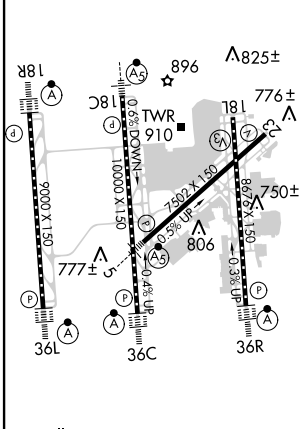
# ILS RWY 36C (CAT III)

CHARLOTTE/DOUGLAS INTL (CLT)

⚠ Simultaneous approach authorized with ILS or LOC Rwy 36L, ILS Rwy 36L (Cat II), ILS Rwy 36L (Cat III), ILS or LOC Rwy 36R, ILS Rwy 36R (Cat II), ILS Rwy 36R (Cat III). DME or RADAR Required. DQG ILS LLZ Rwy 36C unusable for rollout guidance.		ALSF-2 	MISSED APPROACH: Climb to 3000 via CLT R-001 to TOMME/CLT 15.3 DME and hold.
ATIS ARR <b>121.15</b> DEP <b>132.1</b>	CHARLOTTE APP CON (001°-119°) <b>128.32</b> (120°-245°) <b>120.05</b> (246°-360°) <b>134.75</b> (180°-359°) <b>257.2</b> (360°-179°) <b>307.8</b>	CHARLOTTE TOWER (Rwys 18L-36R, 5-23) <b>118.1 257.8</b> (Rwy 18C-36C) <b>126.4 257.8</b> (Rwy 18R-36L) <b>133.35 257.8</b>	GND CON (180°-359°) <b>121.8 348.6</b> (360°-179°) <b>121.9 348.6</b>



ELEV 748	<b>D</b>	TDZE 707
----------	----------	----------



3000	CLT R-001	TOMME CLT 15.3	VGSI and ILS glidepath not coincident (VGSI Angle 3.00/TCH 72).		SOLMN CLT 22.2
8000	IM 809	GLASI CLT 4.8	NIVSE CLT 6.4	MARJO CLT 9.6	DENNE INT CLT 12.7
7000		HUNEX CLT 15.9	KRISL CLT 19	SOLMN CLT 22.2	
6000					
5000					
4000					
3000					
2500					
707 MSL					
960 1139° 5.2 1.6 NM 3.2 NM 3.2 NM 3.2 NM 3.2 NM 3.2 NM					
CATEGORY	A		B		D
S-ILS 36C			CAT IIIa RVR 07		
S-ILS 36C			CAT IIIb RVR 07		
S-ILS 36C			CAT IIIc NA		

## CATEGORY III ILS - SPECIAL AIRCREW & AIRCRAFT CERTIFICATION REQUIRED

SE-2, 07 FEB 2013 to 07 MAR 2013

SE-2, 07 FEB 2013 to 07 MAR 2013