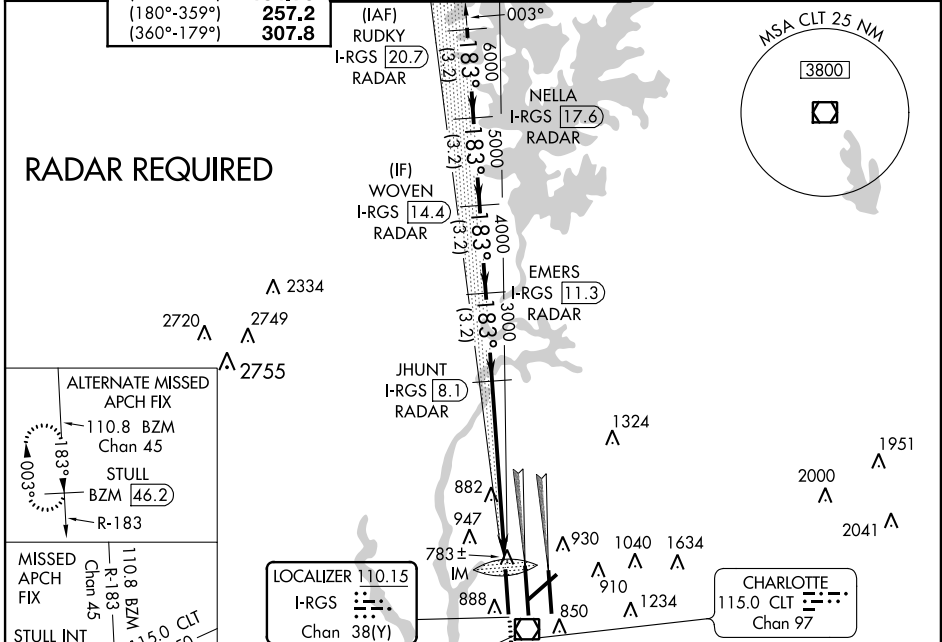


LOC/DME I-RGS 110.15 Chan 38 (Y)	APP CRS 183°	Rwy Idg 9000 TDZE 744 Apt Elev 748
---	------------------------	--

ILS RWY 18R (CAT III)
CHARLOTTE/DOUGLAS INTL (CLT)

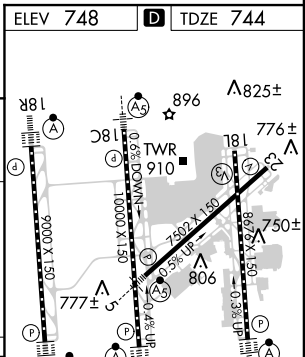
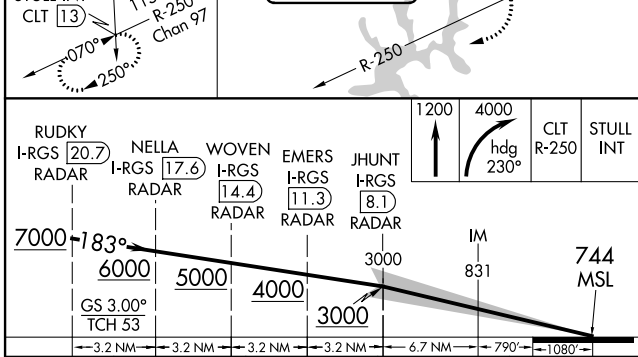
Simultaneous approach authorized with Rwy 18C/L. DME or RADAR Required. **ALS F-2** MISSED APPROACH: Climb to 1200 then climbing right turn to 4000 via heading 230° and CLT R-250 to STULL INT/CLT 13 DME and hold.

ATIS ARR 121.15 DEP 132.1	CHARLOTTE APP CON (001°-119°) 128.32 (120°-245°) 120.05 (246°-360°) 134.75 (180°-359°) 257.2 (360°-179°) 307.8	CHARLOTTE TOWER (Rwys 18L-36R, 5-23) 118.1 257.8 (Rwy 18C-36C) 126.4 257.8 (Rwy 18R-36L) 133.35 257.8	GND CON (180°-359°) 121.8 348.6 (360°-179°) 121.9 348.6	CLNC DEL 127.15 348.6
---	--	---	---	---



SE-2, 07 FEB 2013 to 07 MAR 2013

SE-2, 07 FEB 2013 to 07 MAR 2013



CATEGORY	A	B	C	D
S-ILS 18R	CAT IIIa RVR 07			
S-ILS 18R	CAT IIIb RVR 06			
S-ILS 18R	CAT IIIc NA			

CATEGORY III ILS SPECIAL AIRCREW & AIRCRAFT CERTIFICATION REQUIRED

HIRL all Rwys
REIL Rwys 18L and 23
TDZ/CL Rwys 18R, 36L, 36C and 36R