

(HUSTN.HUSTN2) 11349

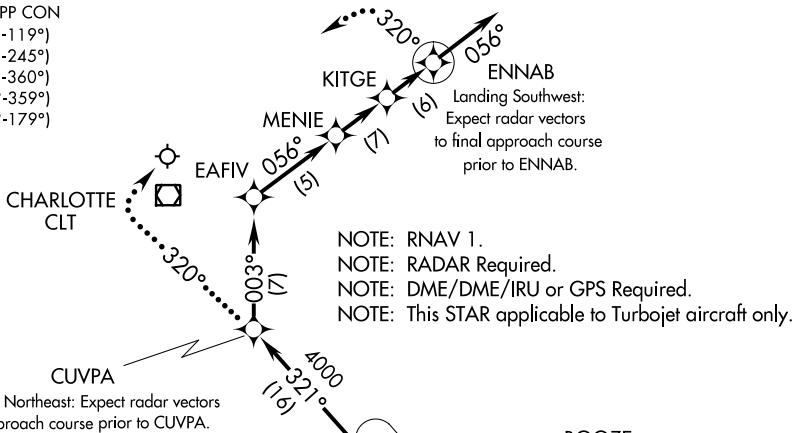
ST-78 (FAA)

CHARLOTTE/DOUGLAS INTL  
CHARLOTTE, NORTH CAROLINA

# HUSTN TWO ARRIVAL (RNAV)

CHARLOTTE APP CON  
 128.32 (001°-119°)  
 120.05 (120°-245°)  
 134.75 (246°-360°)  
 257.2 (180°-359°)  
 307.8 (360°-179°)  
 ATIS ARR  
 121.15

ATIS ARR  
121.15



## ARRIVAL ROUTE DESCRIPTION

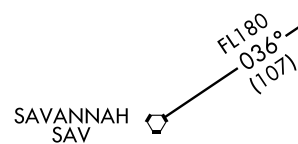
- CHARLESTON TRANSITION (CHS.HUSTN2):
- FAYETTEVILLE TRANSITION (FAY.HUSTN2):
- FLORENCE TRANSITION (FLO.HUSTN2):
- SAVANNAH TRANSITION (SAV.HUSTN2):

From over HUSTN on track 321° to CUVPA, thence as depicted to ENNAB, depart ENNAB on heading 056° for vectors to final approach course.

### LOST COMMUNICATIONS:

**LANDING NORTH:** At CUVPA fly heading 320°, maintain 4000; intercept and execute ILS or LOC RWY 05 approach. If unable, proceed direct to VOR/DME and hold, maintain 4000.

**LANDING SOUTH:** At ENNAB fly heading 320°, maintain 4000; intercept and execute ILS or LOC RWY 23 approach. If unable, proceed direct to CLT VOR/DME and hold, maintain 4000.



NOTE: Chart not to scale.

SE-2, 07 FEB 2013 to 07 MAR 2013

SE-2, 07 FEB 2013 to 07 MAR 2013

HUSTN TWO ARRIVAL (RNAV)  
(HUSTN.HUSTN2) 11349

CHARLOTTE, NORTH CAROLINA  
CHARLOTTE/DOUGLAS INTL